



# iRobot Roomba 860 Battery Replacement

This guide shows how to remove the battery from the iRobot Roomba 860 for battery replacement and safe further disassembly.

Written By: Ryan Murphy



---

## INTRODUCTION

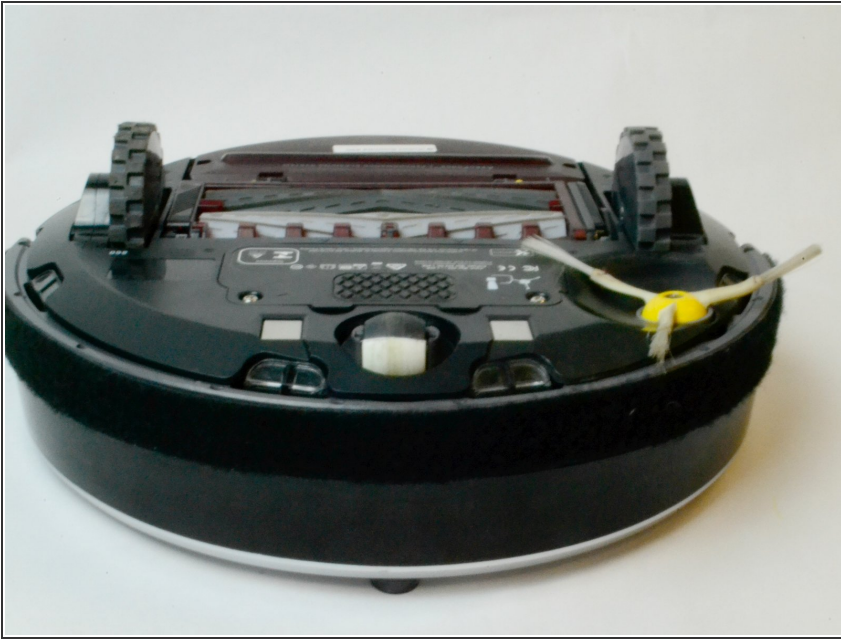
If your iRobot Roomba 860 Battery needs replacement or to safely further disassemble this product, this guide can help

---

### TOOLS:

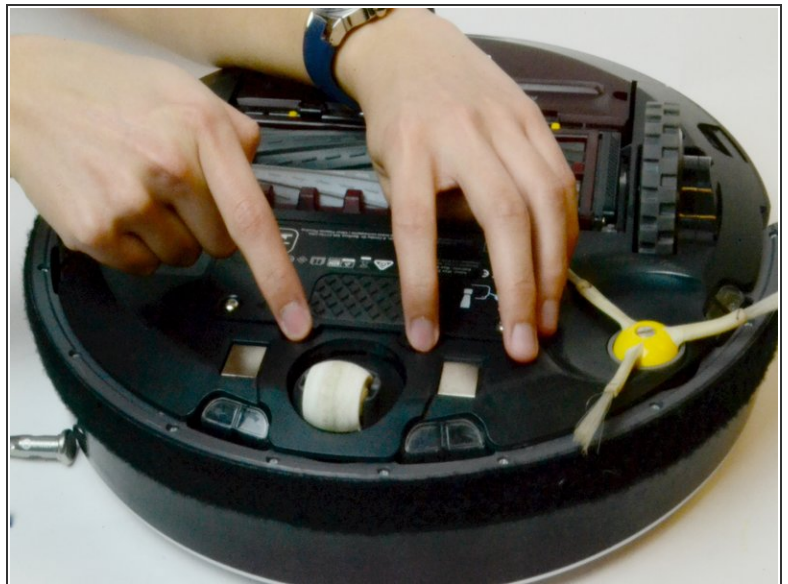
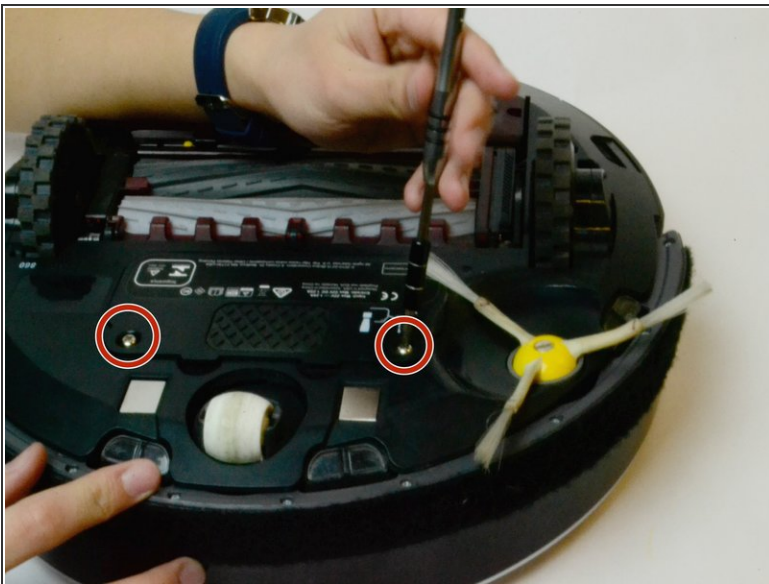
- [Phillips #2 Screwdriver](#) (1)
-

## Step 1 — Battery



- Start by powering down the device to remove the battery from the iRobot Roomba 860.

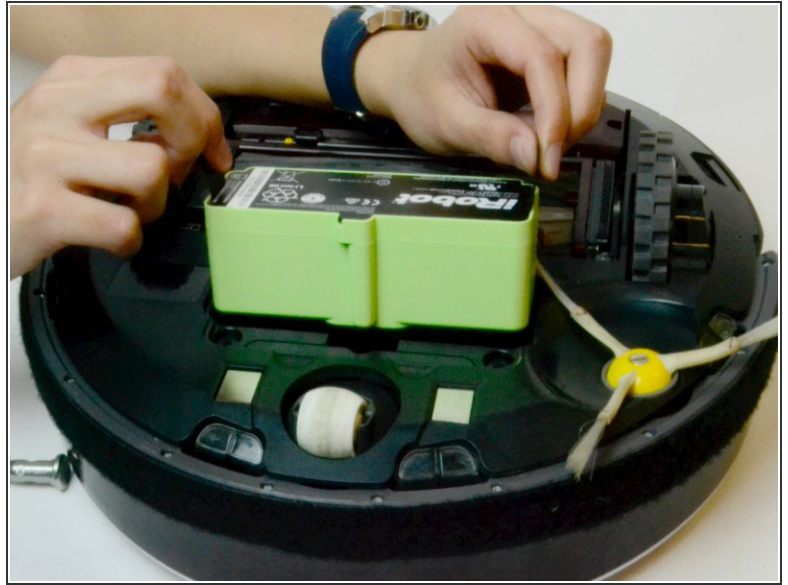
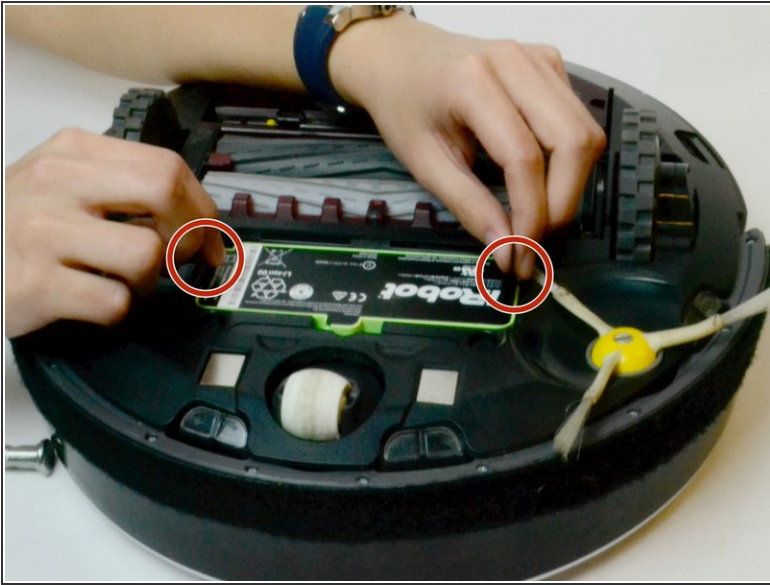
## Step 2



- Flip the Roomba over so that the underside is facing up.
- Locate the battery panel and the 2 - 7 mm Phillips #2 Point Screws.
- Using a Phillips #2 Screwdriver, remove the screws and use your fingers to pull the cover away from the device.

This document was generated on 2019-09-30 08:14:25 AM (MST).

### Step 3



- Locate the two fabric tabs on the side of the battery.
- Pull up on the tabs to easily remove the battery.

To reassemble your device, follow these instructions in reverse order.