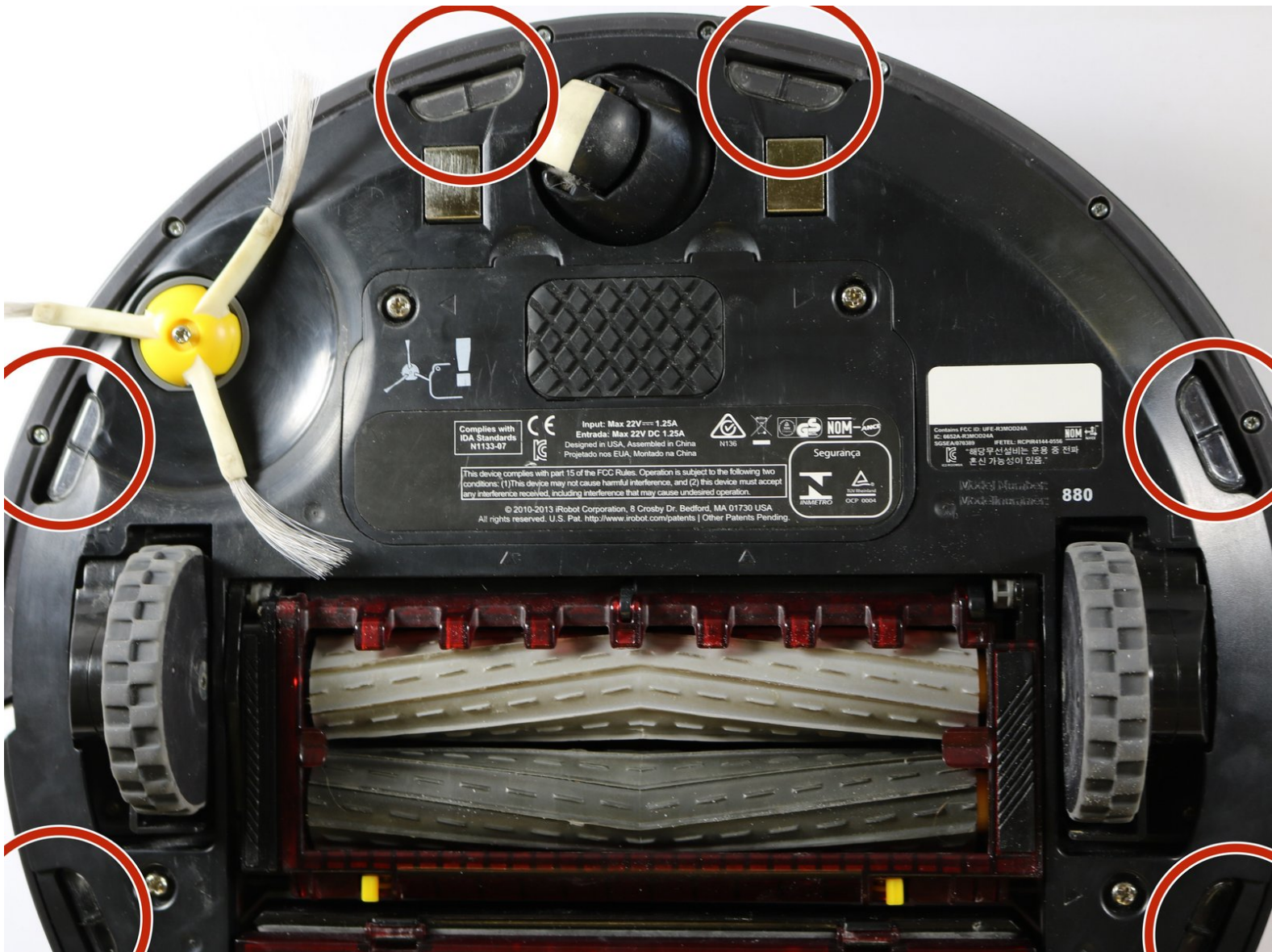




# iRobot Roomba 880 Bumper Sensors Replacement

Need help removing the sensors in your Roomba 880? This guide will walk you through the steps!

Written By: Frances Belcher



---

## INTRODUCTION

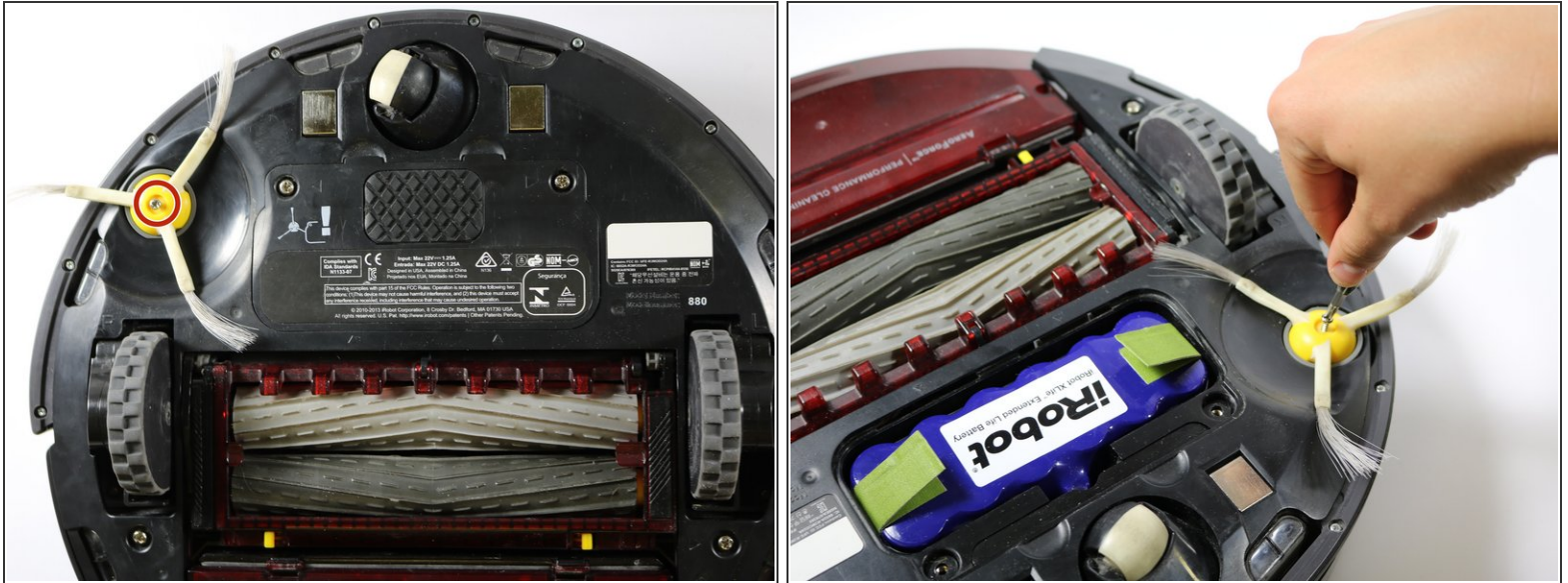
If your Roomba is having trouble sensing it's surrounding, or is displaying a bumper sensor error, you will need to replace the sensors. While working through this, make sure to keep track of the screws, as you accumulate quite a few.



### TOOLS:

- [Phillips #0 Screwdriver](#) (1)
  - [Phillips #1 Screwdriver](#) (1)
  - [iFixit Opening Tools](#) (1)
  - [Phillips #2 Screwdriver](#) (1)
-

## Step 1 — Bumper Sensors



- Flip your Roomba over so the wheels are facing up.
- Using a Phillips #2 screwdriver, remove the side brush and place off to the side. There will be a 10mm screw that remains in the brush.

## Step 2



- Remove the battery panel and 10mm screws with a Phillips #2 driver and then take the battery out of the device.

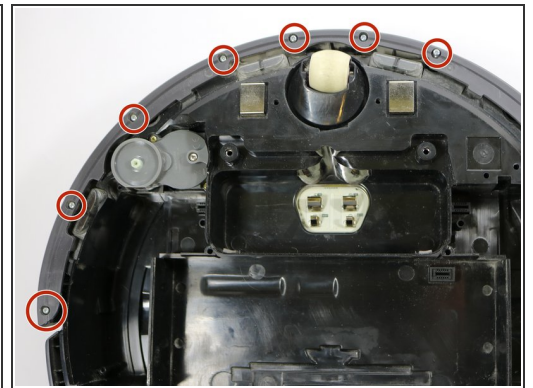
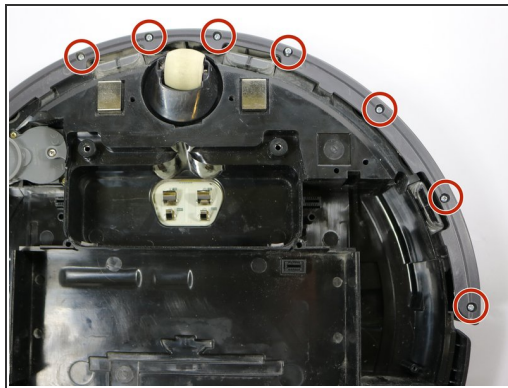
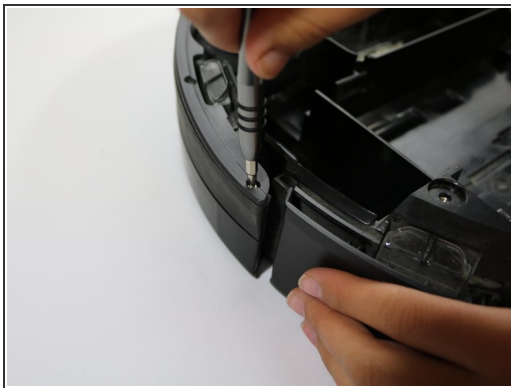


## Step 3



- Remove the two 10mm screws holding the back plate in place using a Phillips #2 screwdriver, and then remove the plate from the device.

## Step 4



- Using a Phillips #1 screwdriver, remove the ten 10mm screws that hold the bumper in place.

## Step 5



- ❗ Flip your Roomba over so you are looking at the face of your device.
- Using a plastic opening tool, pry the face plate off of the Roomba.
- ⚠ While prying the the face plate off of the Roomba, do so gently. Do not force the plate off as this could result in broken pieces.

## Step 6



- Remove the white cover that protects the motherboard.
- Remove the black circular face plate from your device. It is snapped in place, but you can gently pop it off.

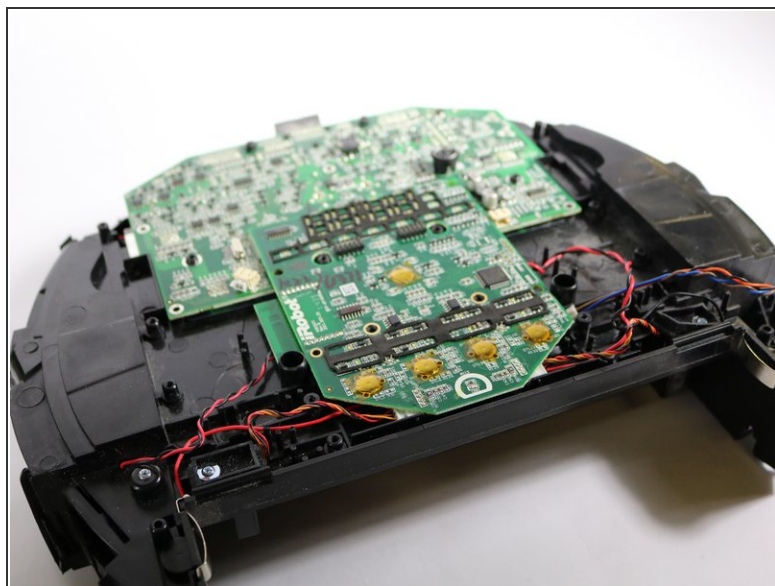
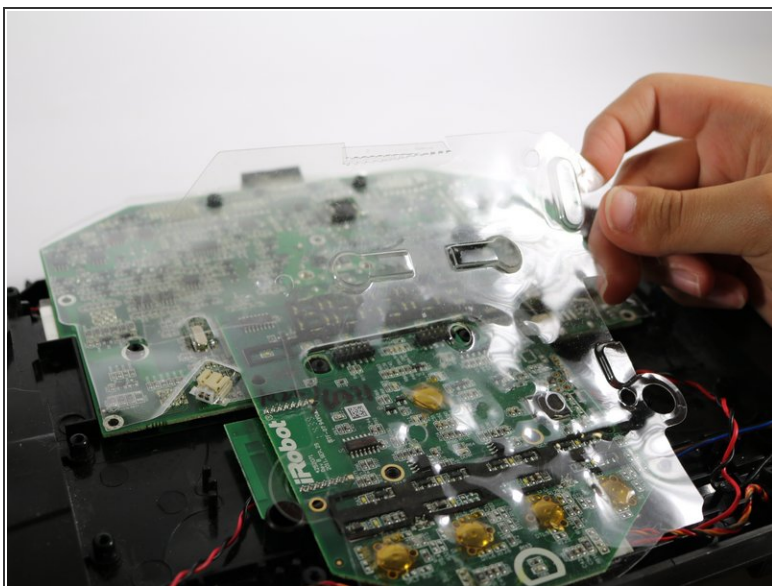


## Step 7



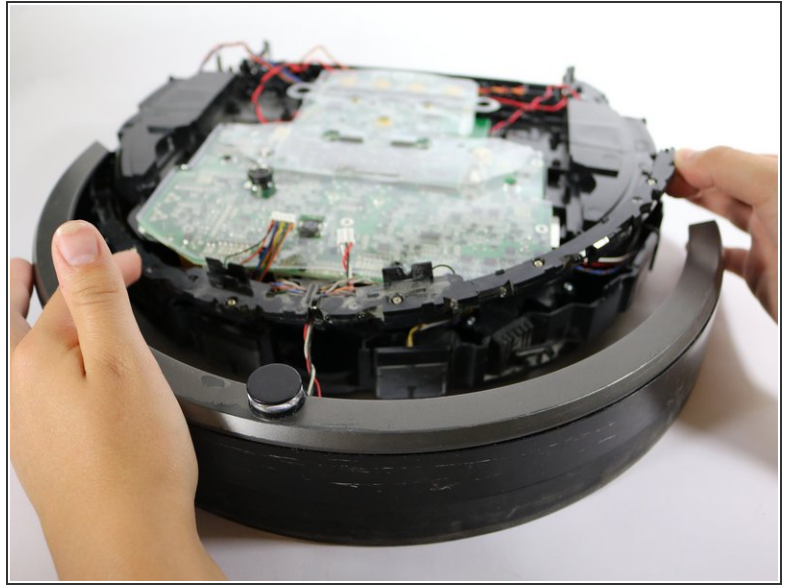
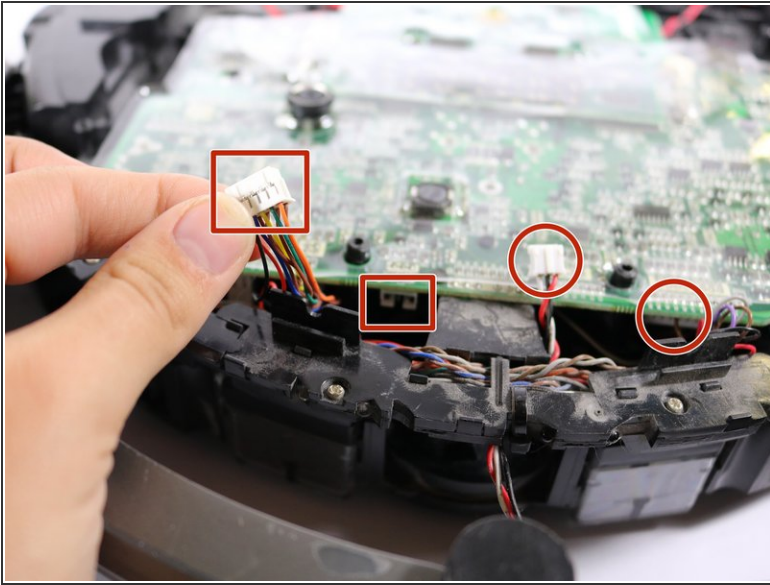
- Using a Phillips #0 screwdriver, remove the six 10mm screws holding the black panel in place.


## Step 8





- Remove the two plastic coverings that further protect the motherboard.

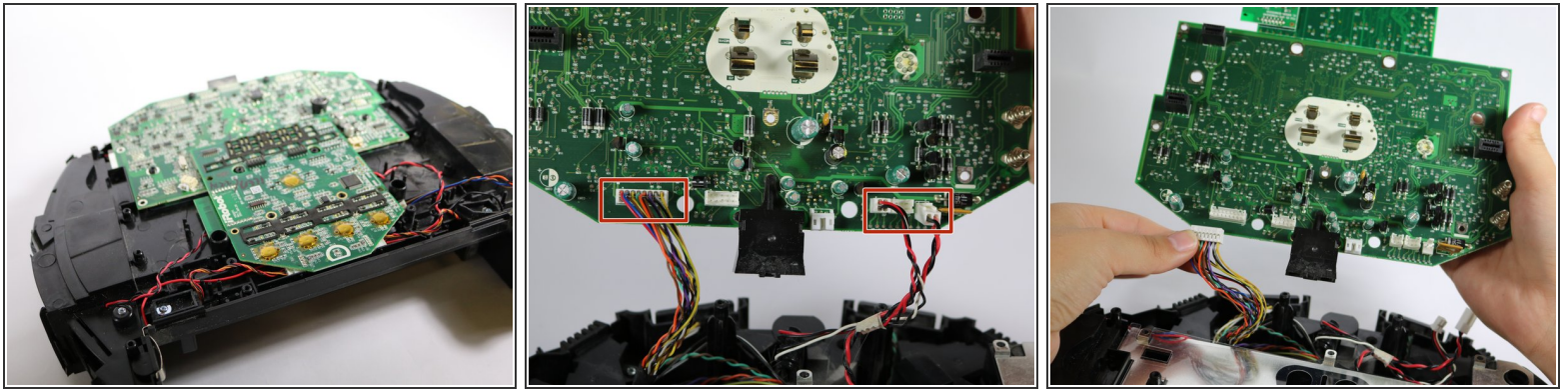
## Step 9



 This next step will require some force as the cables are securely connected to the motherboard at this time.

- Remove the two cables that connect the bumper and sensors from the motherboard.
-  As you can see in the photo, the cable and the location of where it goes on the motherboard are marked with their respective shapes.
- Fully disengage the bumper, along with the skinny IR sensor track from the main part of the device.
-  The sensor track is hidden underneath the bumper, but it connected with several wires.

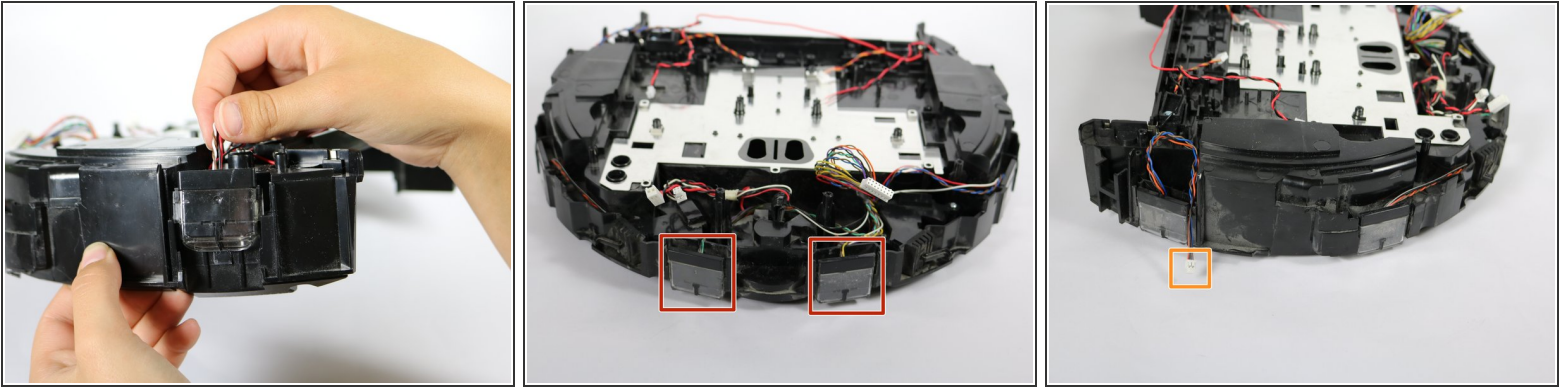
## Step 10



- Rotate the device 180 degrees so you are looking at the other side.
- Remove the cables that are holding this part of the motherboard in place.
- ☞ This might require a bit of tugging. We recommend gently wiggling the cable at the base, to help loosen the hold.

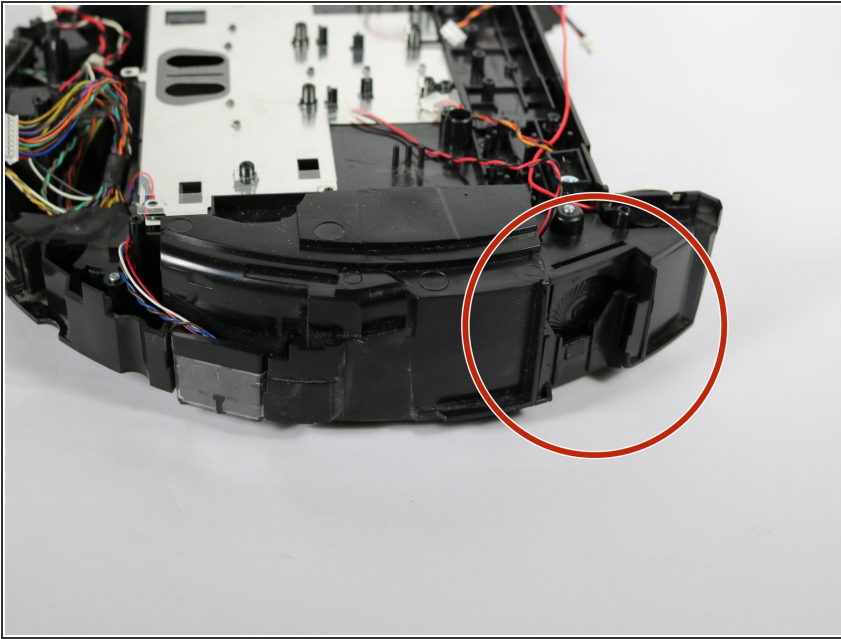


## Step 11



- Remove the 6 bumper sensors from the side of your device.
- ⓘ This will require some tugging as the sensors are securely situated in the device currently. We recommend using a spudger if they are particularly difficult.
- ✎ You might need to cut the tape that is currently holding several sets of bumper sensor wires together. It might be helpful to tape the new sensor wires back together when putting your device back together.
- As you can see in the third photo the cable from the bumper sensor was originally connected to the motherboard.

## Step 12



- Now you can easily snap the 6 replacement bumper sensors into the device, and begin the reassembly.

To reassemble your device, follow these instructions in reverse order.