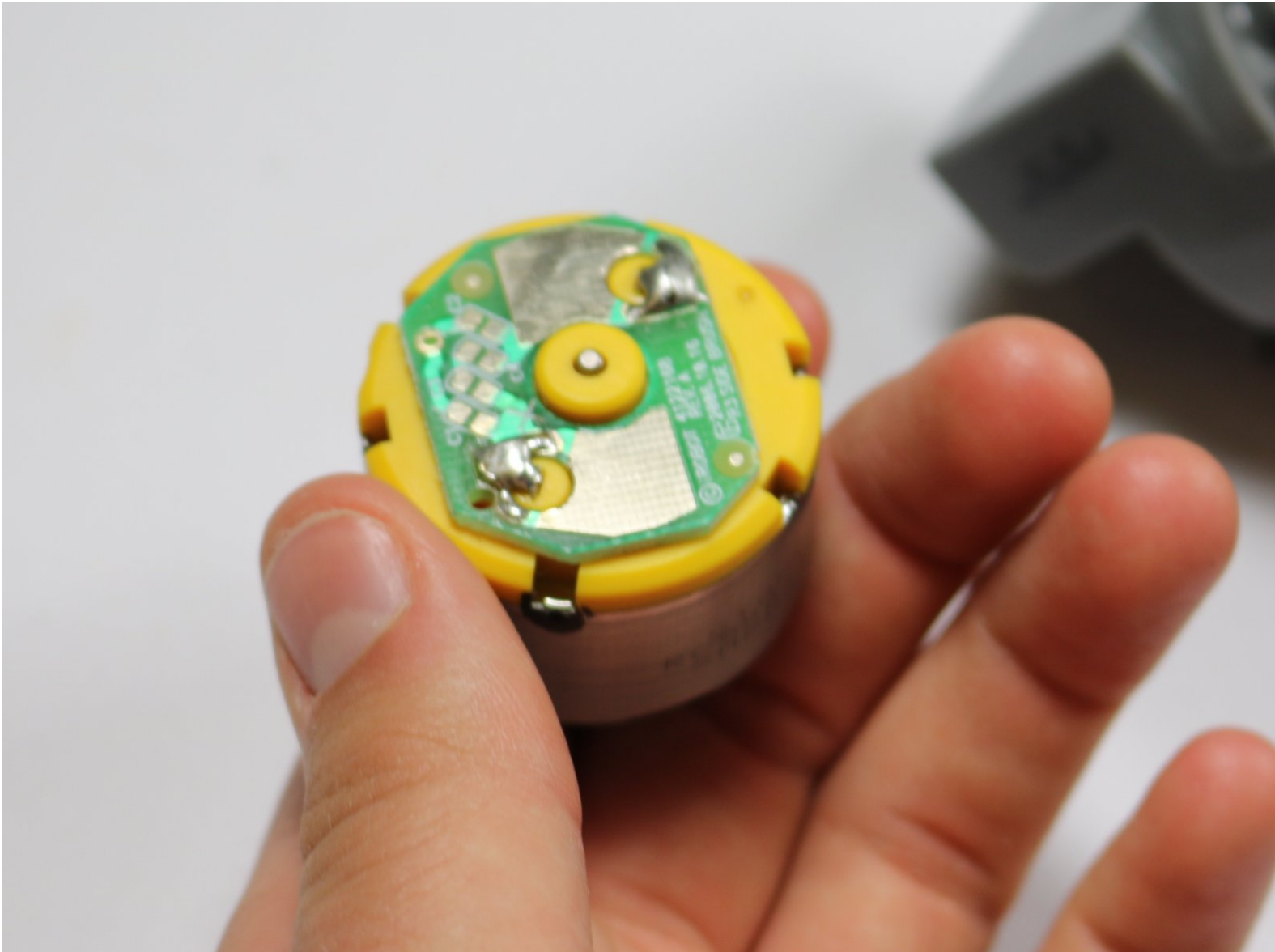




# iRobot Roomba 880 Side Brush Motor Replacement

How to replace a side brush motor for the Roomba 880.

Written By: agriewe



---

## INTRODUCTION

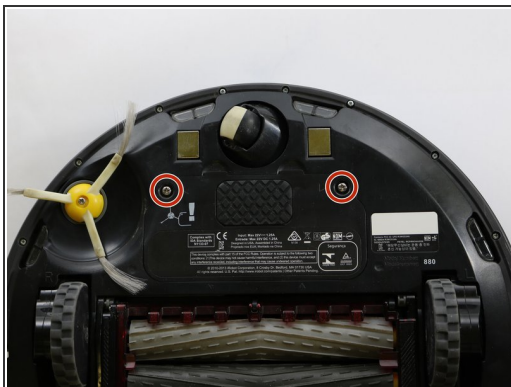
If the side brush on your Roomba 880 isn't spinning, it may need a new side brush motor. Here's how to replace it!



### TOOLS:

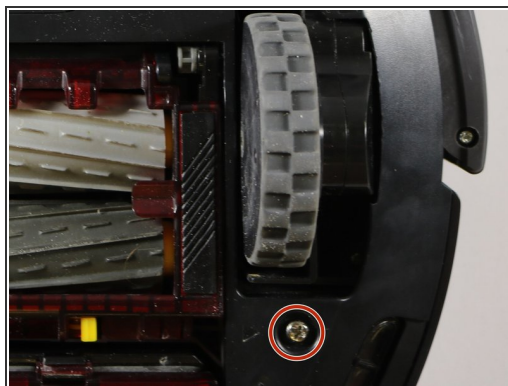
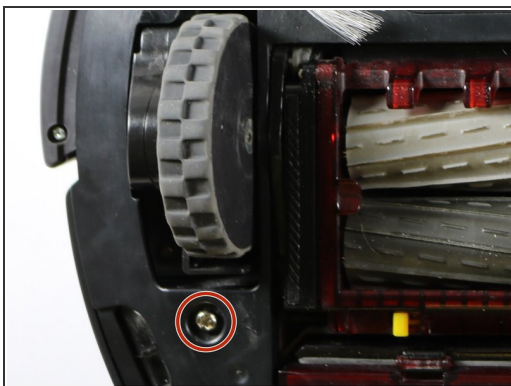
- [Phillips #1 Screwdriver](#) (1)
-

## Step 1 — Side Brush Motor



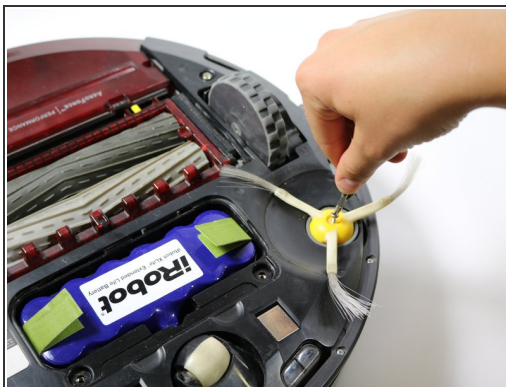
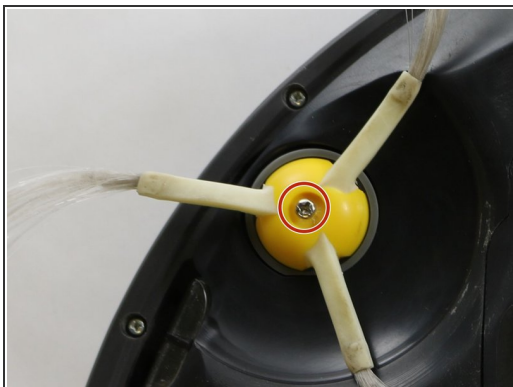
- Remove the two Phillips #1 15mm screws holding the battery cover in place.
- Once unscrewed, remove the battery cover and set aside.

## Step 2



- Remove two 15mm Phillips #1 screws beneath each side wheel.

## Step 3



- Remove the 10mm Phillips #1 screw holding the side brush in place.
- Once unscrewed, remove the side brush and set aside.

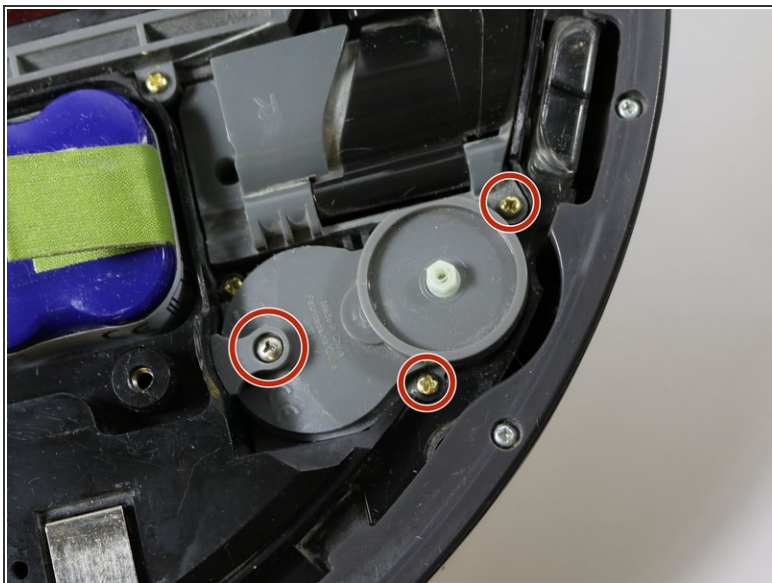
## Step 4



- Remove the outer covering.



## Step 5



- Remove the three 10mm Phillips #1 screws holding down the side brush motor case.

## Step 6



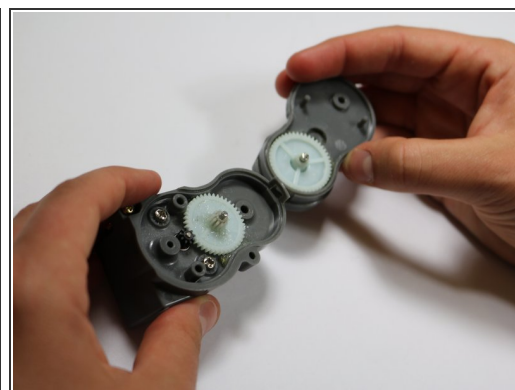
- Take out the side brush motor case.

## Step 7



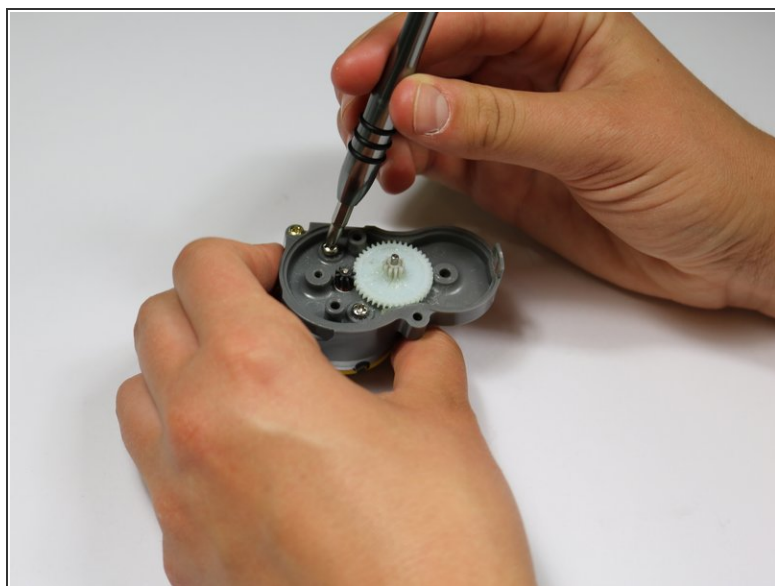
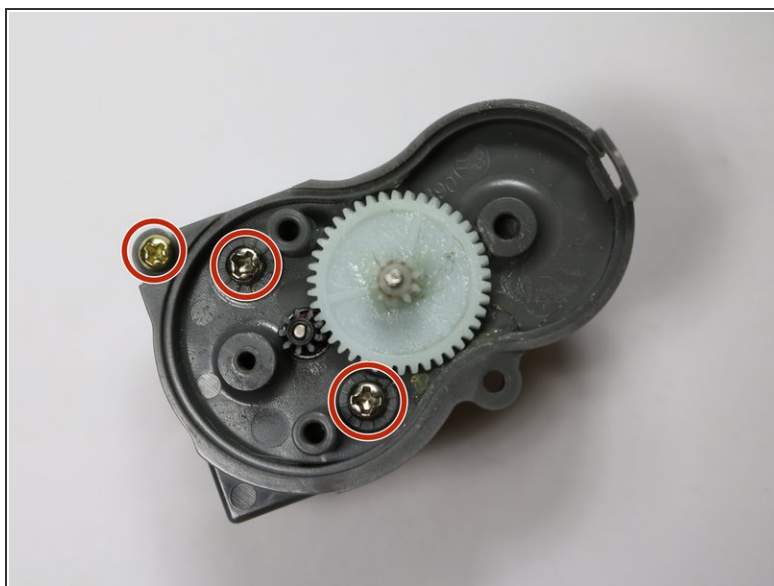
- Remove the 10mm Phillips #1 screw holding down the lid of the side brush motor case.

## Step 8



- Remove the piece holding the lid to the case.
- Take off the lid and set aside.

## Step 9



- Remove the three 10mm Phillips #1 screws.

## Step 10



- Flip over and remove the side brush motor.
- All done!

To reassemble your device, follow these instructions in reverse order.