



iRobot Roomba 880 Side Wheels Replacement

You will be able to replace the two side wheels with this guide.

Written By: Chase Oleson





TOOLS:

- [JIS Driver Set](#) (1)



PARTS:

- [Roomba 800 Left side wheel](#) (1)
- [Roomba 800 Right side wheel](#) (1)

Step 1 — Battery



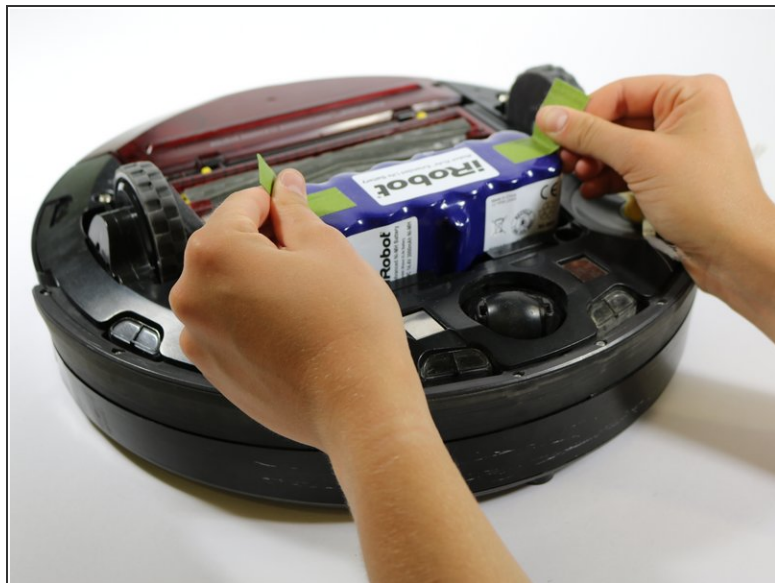
- Start with your Roomba upside down, with the wheels facing up.
- Using a JIS driver in #1 size remove the two 15mm screws holding the battery cover in place.

Step 2



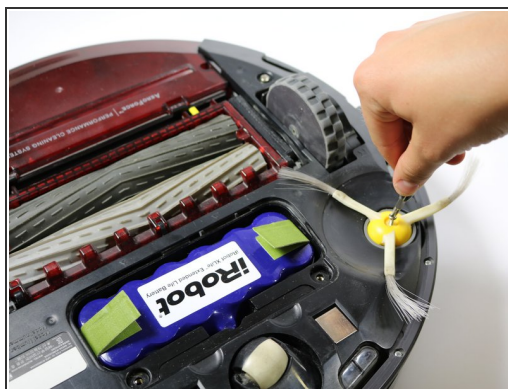
- Remove the battery cover and place it off to the side.

Step 3



- Remove the battery using the green tabs on either side of the battery.

Step 4 — Side Wheels



- Loosen the side brush screw with a screwdriver.
- Remove the side brush

Step 5



- Loosen the single screws that retains the side wheel to the Roomba.
- Remove cover over the wheel that was held in place by the screws.
- Remove the wheel module.

To reassemble your device, follow these instructions in reverse order.