



iRobot Roomba 891 Battery Replacement

Replacing a dead or defective battery in the 891 Roomba.

Written By: Justin Tolin



INTRODUCTION

This guide will walk you through the required steps to replace the roomba battery. Including all required tools and a link for the replacement battery.



TOOLS:

- [Phillips #2 Screwdriver](#) (1)



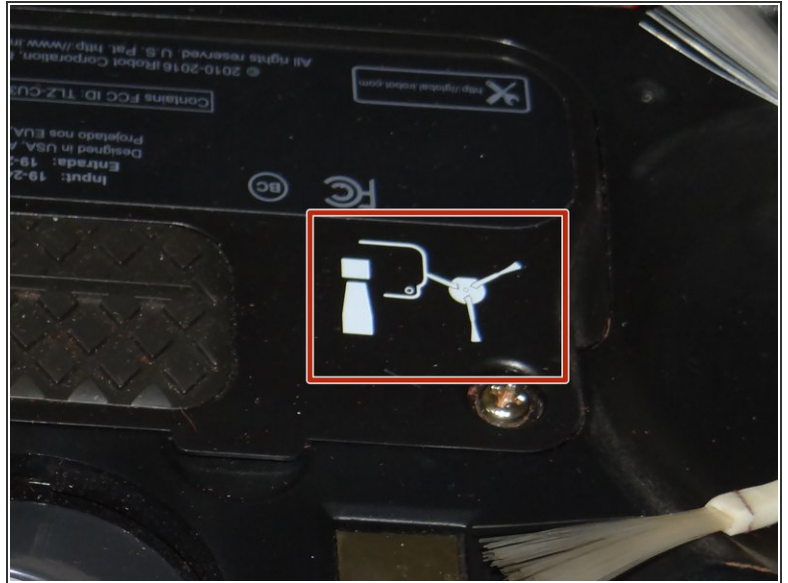
PARTS:

- [Roomba 1800 Li-ion Battery](#) (1)

Li-ion 1800

<https://store.irobot.com/default/parts-and-accessories/roomba-accessories/900-series/roomba-1800-lithium-ion-battery/4502233.html>

Step 1 — Battery



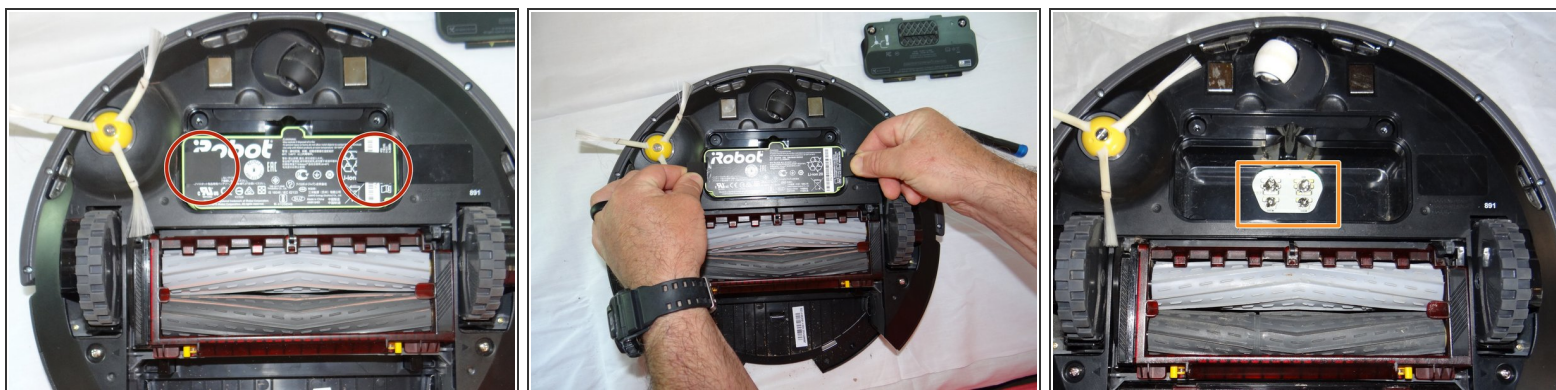
- Start by flipping your Roomba onto its back on a flat surface.
- ☑ Be sure not to close the side brush bristles in the battery door during reassembly as shown by the handy warning in the second photo.

Step 2



- Unscrew both the 11mm Phillips #2 screws from the battery cover and remove cover from the Roomba.
- ⓘ *These captive screws are not intended to be removed from the cover.*

Step 3



- Grasp the tabs on either side of the battery.
- Remove the battery by pulling up on the tabs.
- While you're here, check the battery contacts for corrosion or debris.

To reassemble your device, follow these instructions in reverse order.