



iRobot Roomba 891 Extractor Assembly Replacement

This guide shows you how to remove and replace the extractor assembly in your Roomba.

Written By: Justin Tolin



INTRODUCTION

This easy guide show you the steps to remove and replace the extractor assembly on your roomba.



TOOLS:

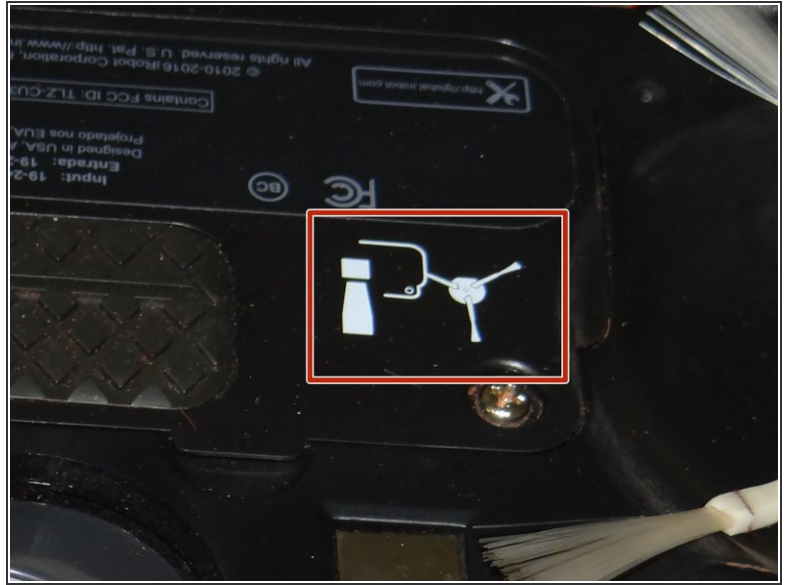
- [Flathead 3/32" or 2.5 mm Screwdriver](#) (1)
- [Phillips #2 Screwdriver](#) (1)



PARTS:

- [Extractor head module](#) (1)
<https://store.irobot.com/default/parts-and-accessories/roomba-accessories/800-series/cleaning-head-for-roomba-800-and-900-series/4419705.html#prefn1=ooboRestrictions&sz=12&start=15&prefv1=public>

Step 1 — Battery



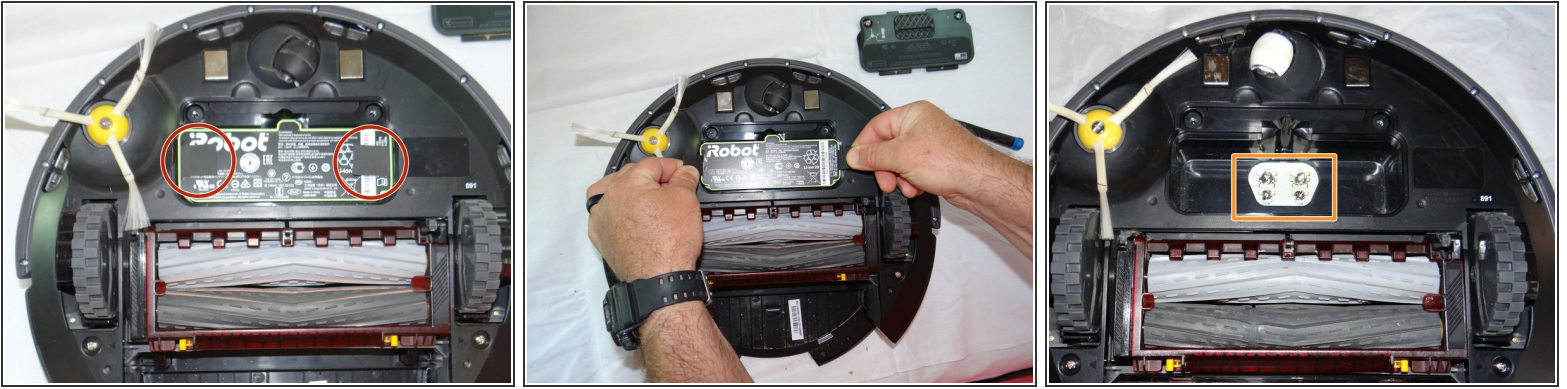
- Start by flipping your Roomba onto its back on a flat surface.
- ☑ Be sure not to close the side brush bristles in the battery door during reassembly as shown by the handy warning in the second photo.

Step 2



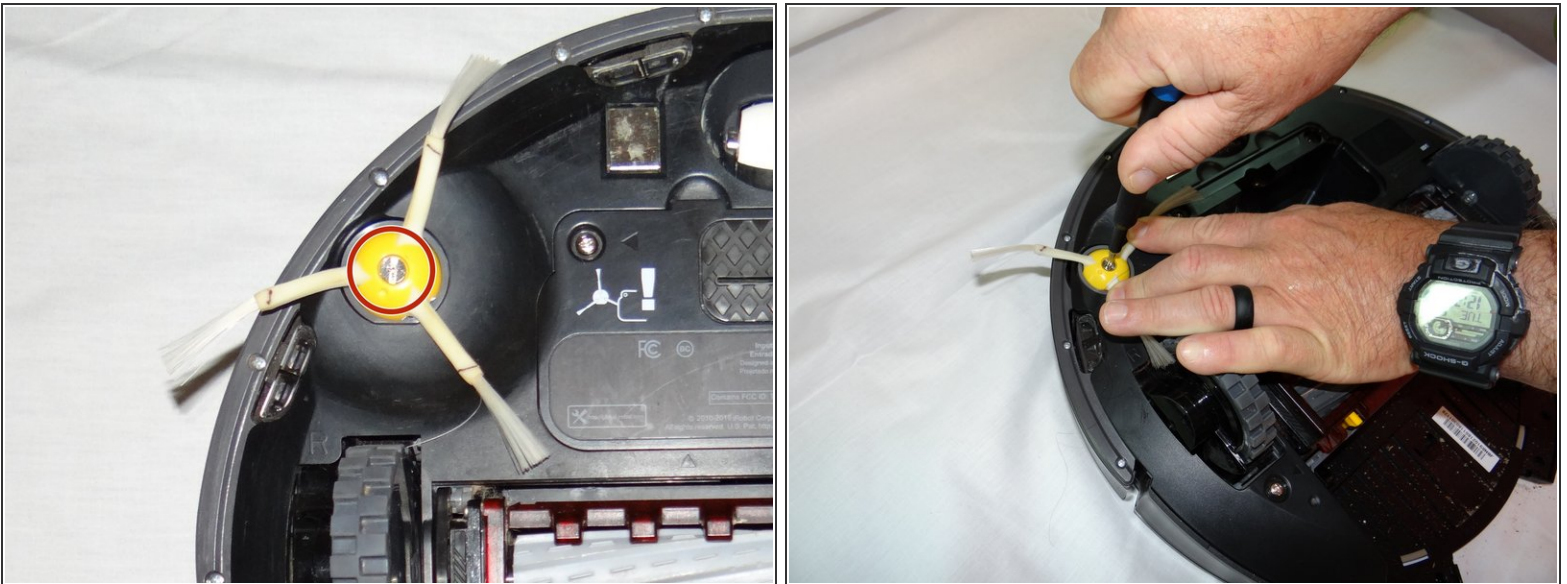
- Unscrew both the 11mm Phillips #2 screws from the battery cover and remove cover from the Roomba.
- ⓘ *These captive screws are not intended to be removed from the cover.*

Step 3



- Grasp the tabs on either side of the battery.
- Remove the battery by pulling up on the tabs.
- While you're here, check the battery contacts for corrosion or debris.

Step 4 — Side Brush



- Remove the 7.5mm flat head #4 screw from center of the side brush.

Step 5



- Gently pull the side brush off of the motor hub.

Step 6 — Extractor Assembly



- Remove the dustbin assembly from the Roomba.

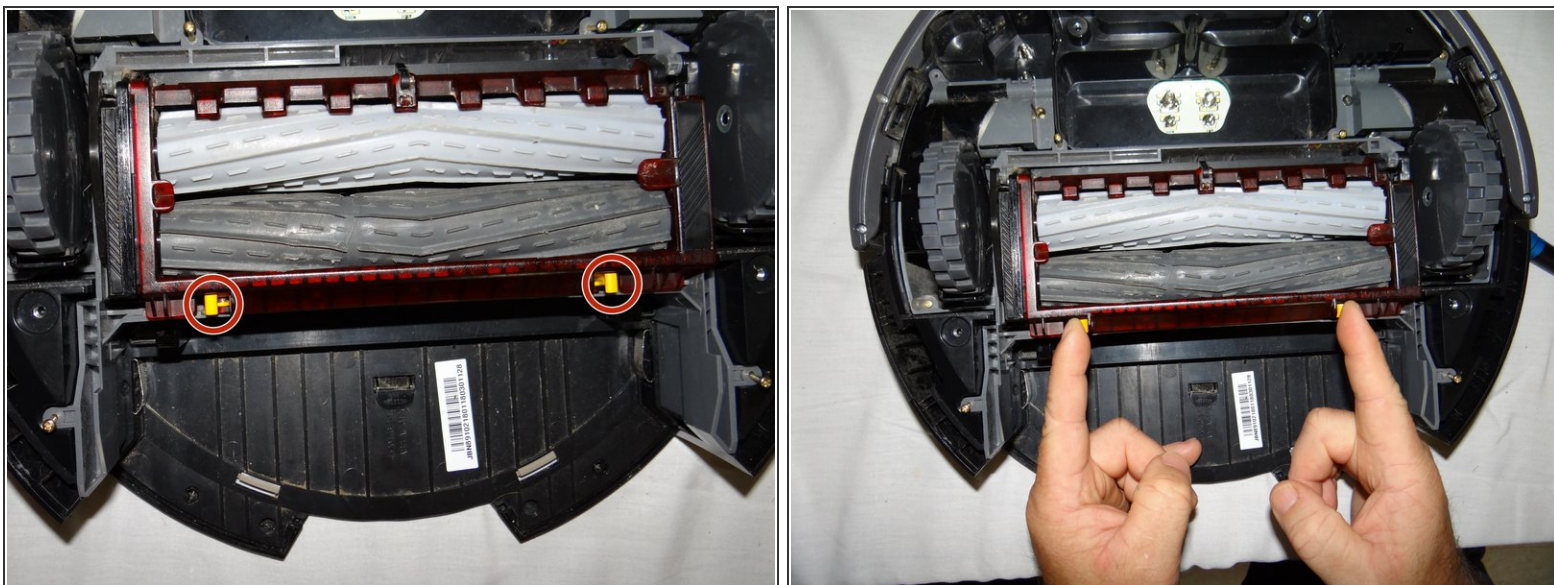
Step 7



- Unscrew the 2 phillips #2 11mm screws from roomba.

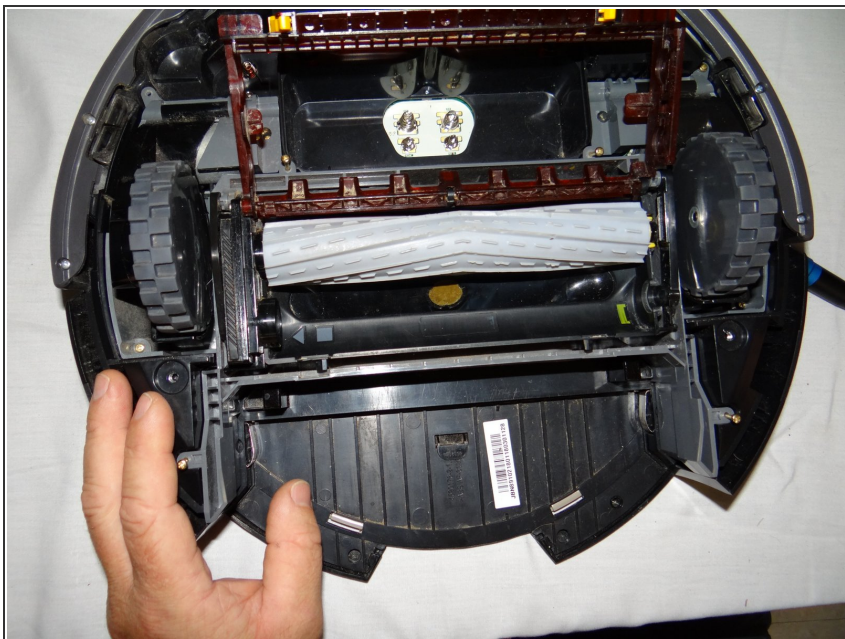
i These captive screws will remain in the bottom cover after being loosened.

Step 8



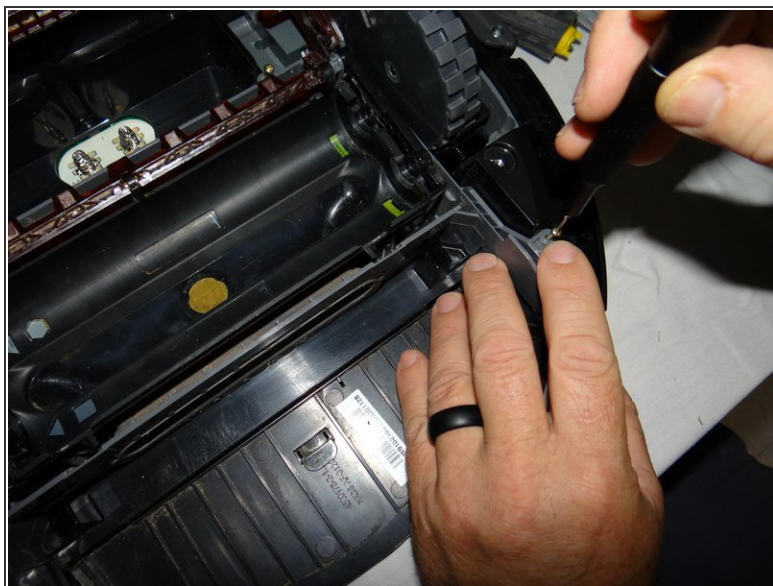
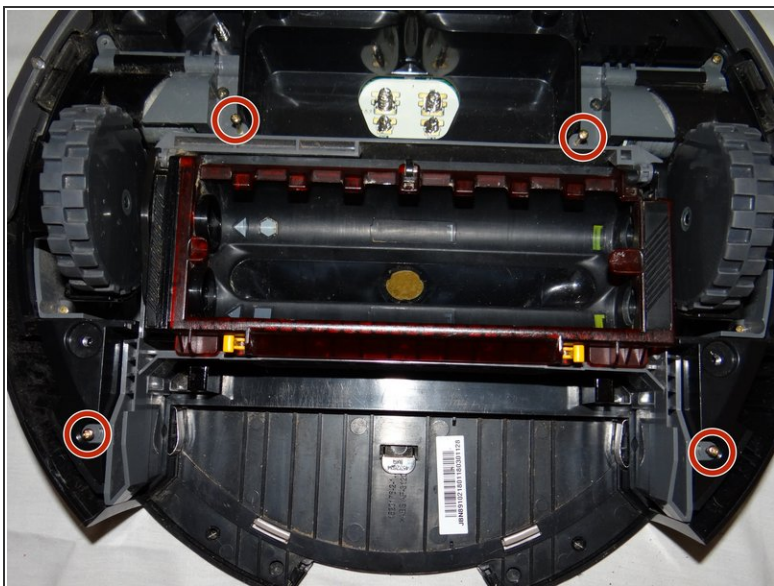
- Lift the yellow tabs and lift the red cover from the extractor assembly.

Step 9



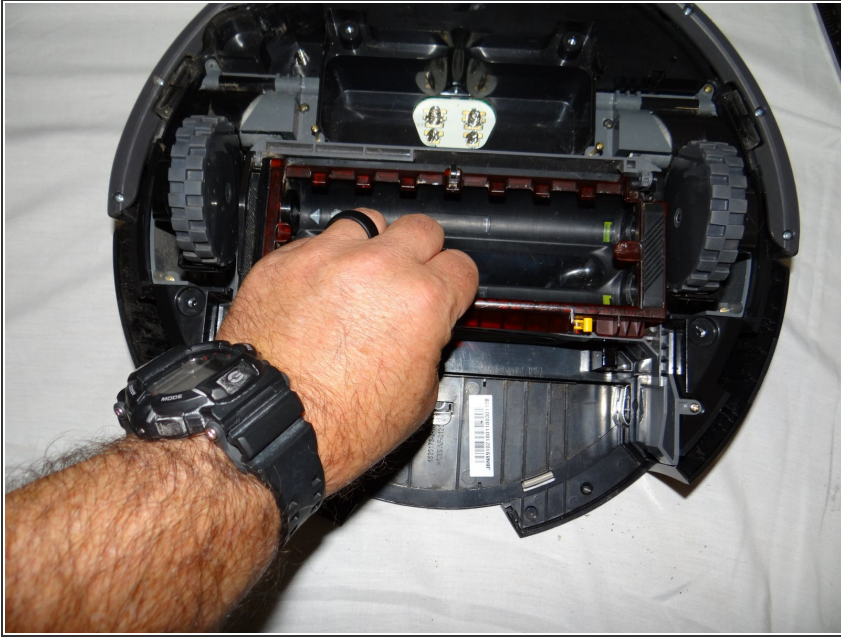
- Remove the rollers from the assembly by lifting it out from right side.

Step 10



- Close the cover and remove the four 11mm Phillips #00 screws from the assembly.

Step 11



- Grasp the center of the assembly and remove from the roomba.

To reassemble your device, follow these instructions in reverse order.