



iRobot Roomba 891 Side Brush Motor Replacement

This guide will walk you through replacing the side brush motor on a Roomba. Parts available at [the link](#).

Written By: Justin Tolin



INTRODUCTION

This easy to follow guide will walk you through replacing a defective side brush module on your roomba. This guide requires a propriatery bit screwdriver that is not found in most homes. You will need to purchase one before begining.



TOOLS:

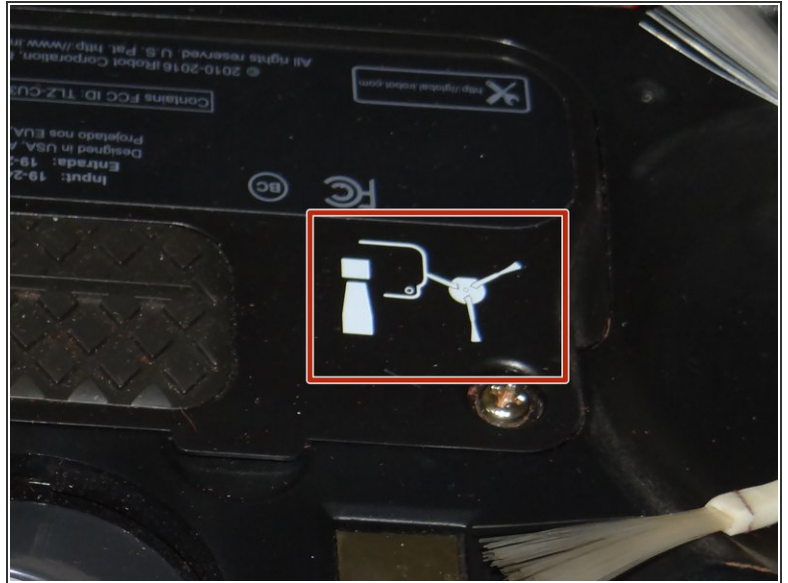
- [Phillips #2 Screwdriver](#) (1)
- [Y1 Tri-point Screwdriver](#) (1)
- [Flathead 3/32" or 2.5 mm Screwdriver](#) (1)



PARTS:

- [Roomba side brush module](#) (1)

Step 1 — Battery



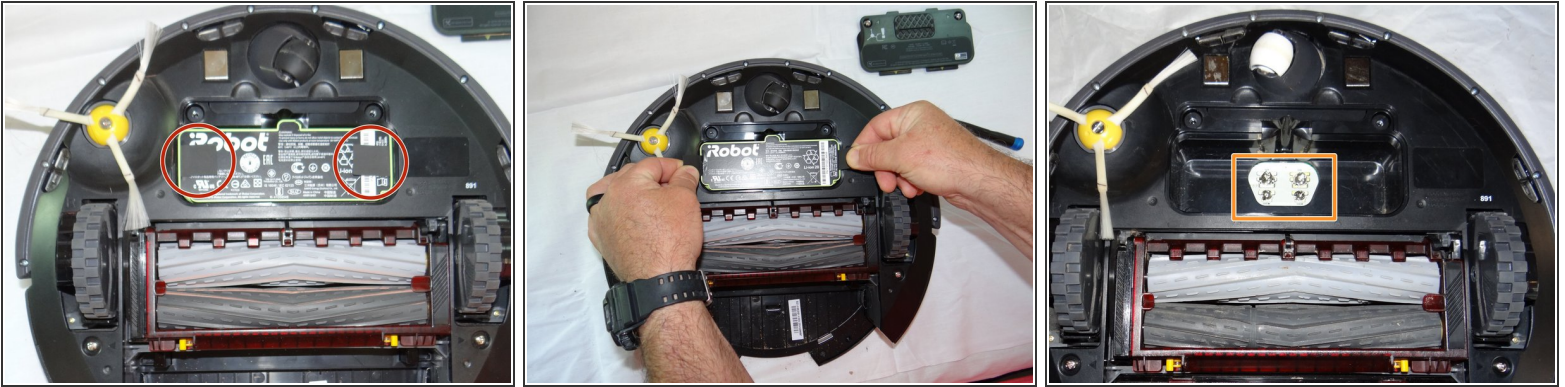
- Start by flipping your Roomba onto its back on a flat surface.
- ☑ Be sure not to close the side brush bristles in the battery door during reassembly as shown by the handy warning in the second photo.

Step 2



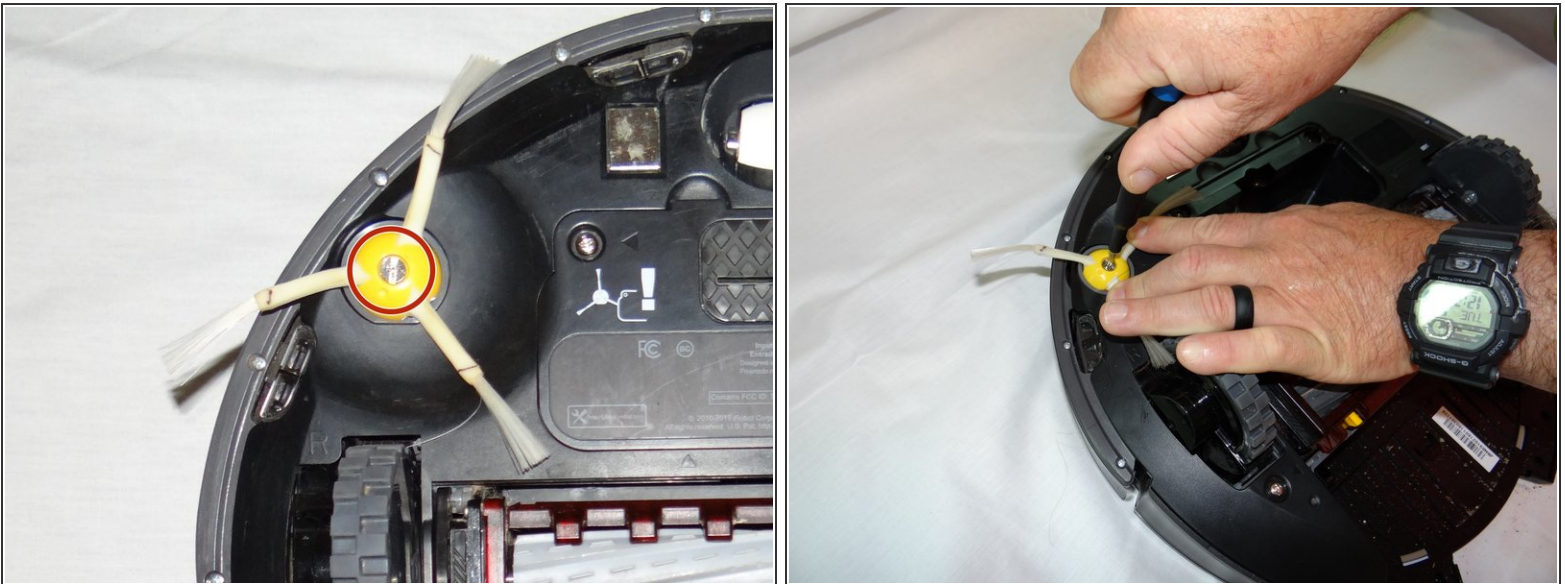
- Unscrew both the 11mm Phillips #2 screws from the battery cover and remove cover from the Roomba.
- ⓘ *These captive screws are not intended to be removed from the cover.*

Step 3



- Grasp the tabs on either side of the battery.
- Remove the battery by pulling up on the tabs.
- While you're here, check the battery contacts for corrosion or debris.

Step 4 — Side Brush



- Remove the 7.5mm flat head #4 screw from center of the side brush.

Step 5



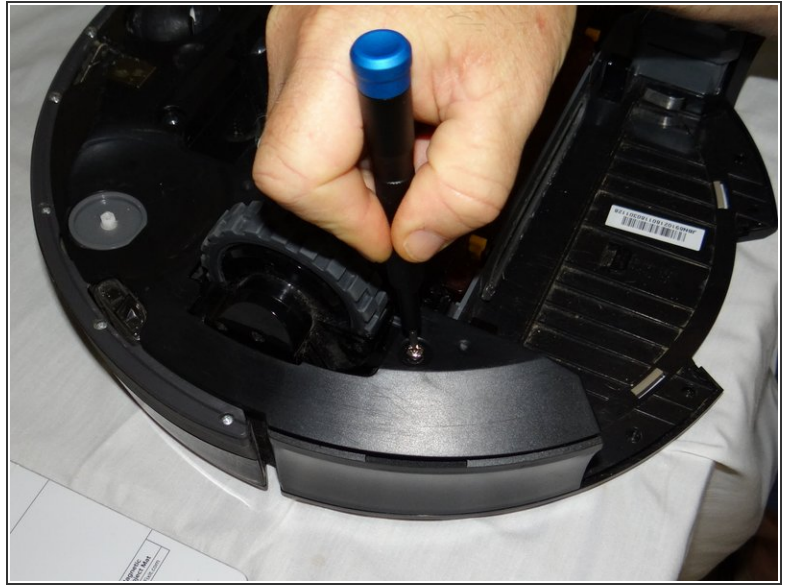
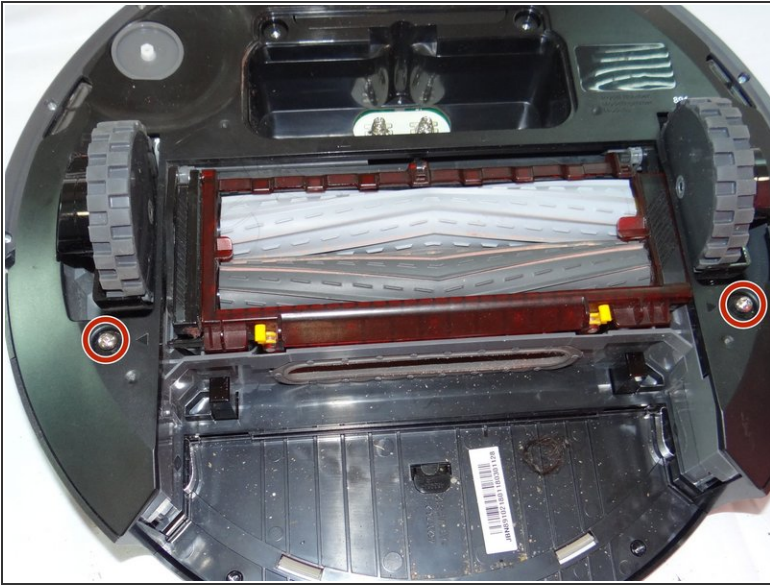
- Gently pull the side brush off of the motor hub.

Step 6 — Side Brush Motor



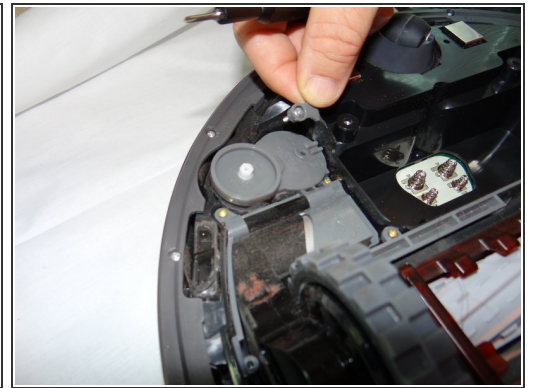
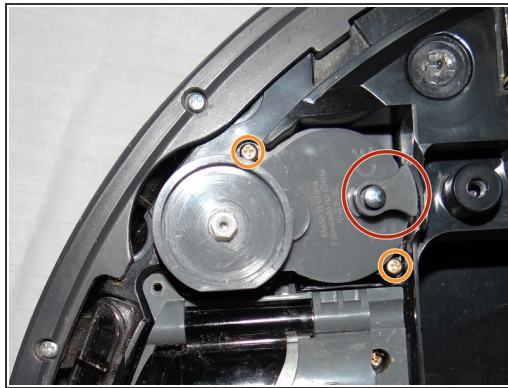
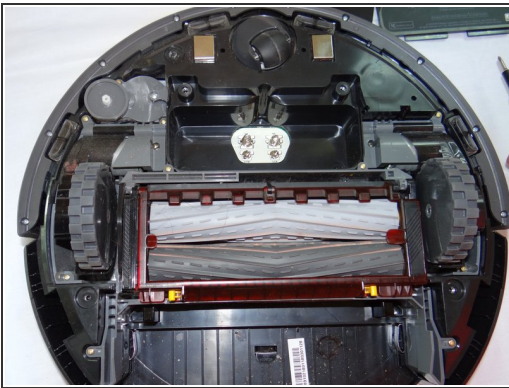
- Remove dustbin from Roomba.

Step 7



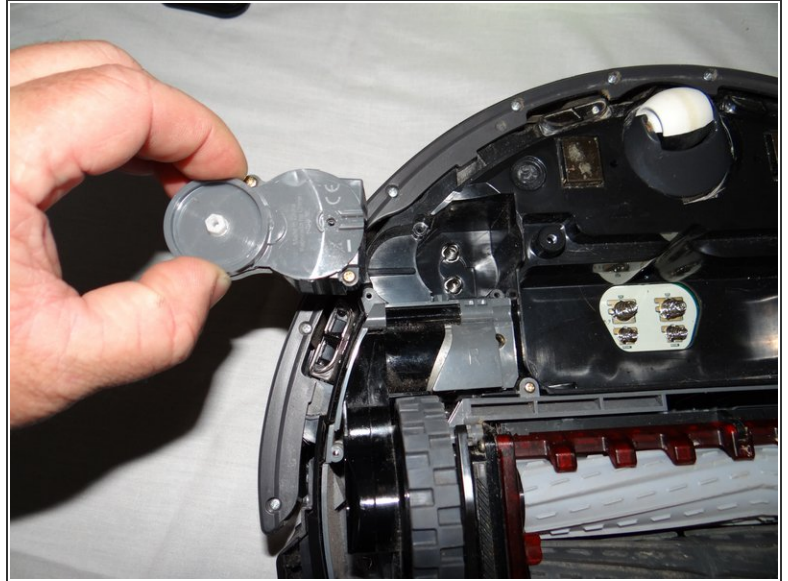
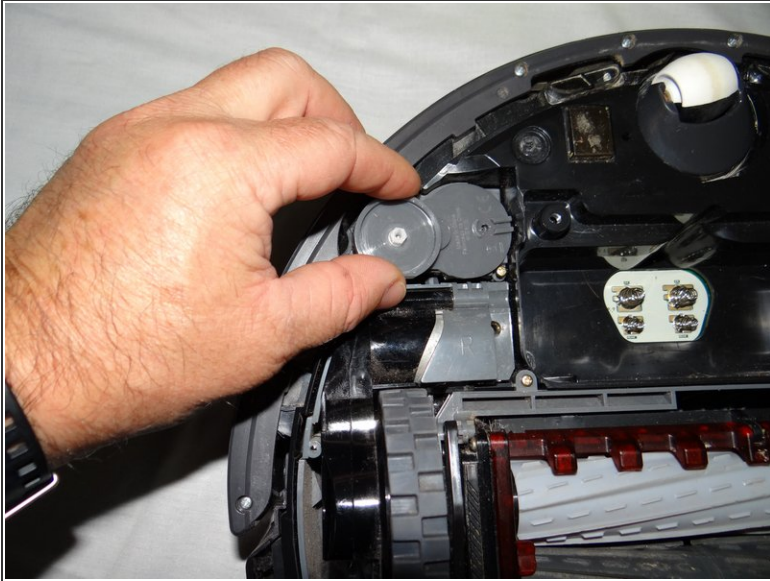
- Unscrew 2 phillips #2 screws from the bottom cover.
- Remove the bottom cover.

Step 8



- Unscrew and remove the single 13mm Tri-point Y1 screw and retaining tab.
- Loosen two captive Phillips #00 16mm screws.

Step 9



- Grasp motor module and remove from roomba.

To reassemble your device, follow these instructions in reverse order.