



iRobot Roomba 960 Side Wheels Replacement

This guide will instruct you how to replace the side wheels of the iRobot Roomba 960. The wheels should be replaced when worn or broken.

Written By: Vanessa Greyson



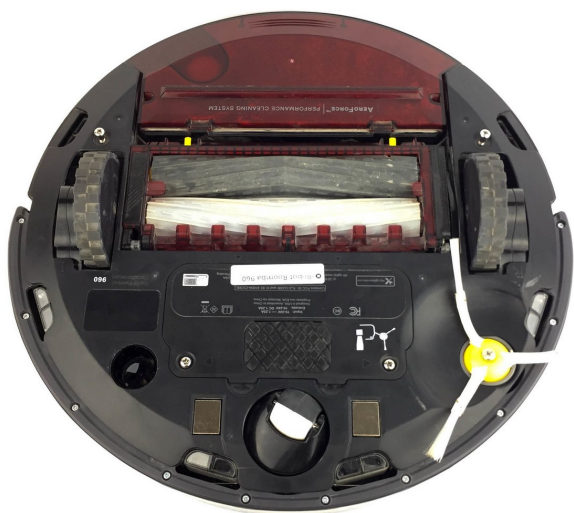
INTRODUCTION

This guide will instruct you how to replace the side wheels of the iRobot Roomba 960. The wheels should be replaced when worn or broken.

TOOLS:

- [Phillips #1 Screwdriver](#) (1)
 - [Flathead 3/32" or 2.5 mm Screwdriver](#) (1)
-

Step 1 — Battery



- Turn the Roomba upside down and orient it so that the wheels are facing upwards and the dustbin is furthest from you.

Step 2



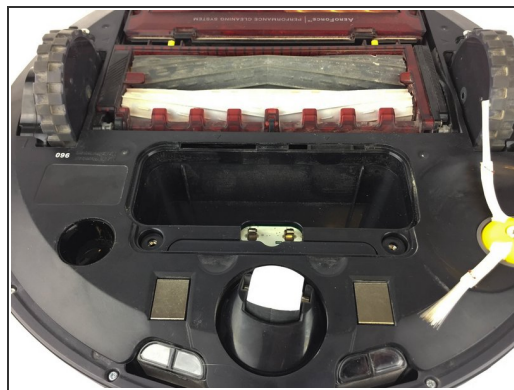
- With the Phillips #1 screwdriver, remove the two 11.4mm screws.

Step 3



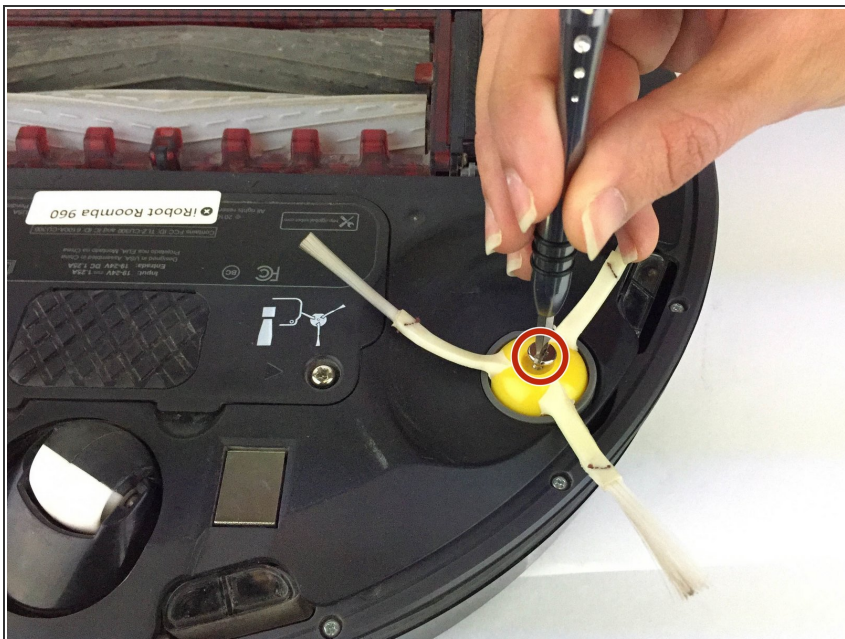
- Lift the plastic cover to access the battery.

Step 4



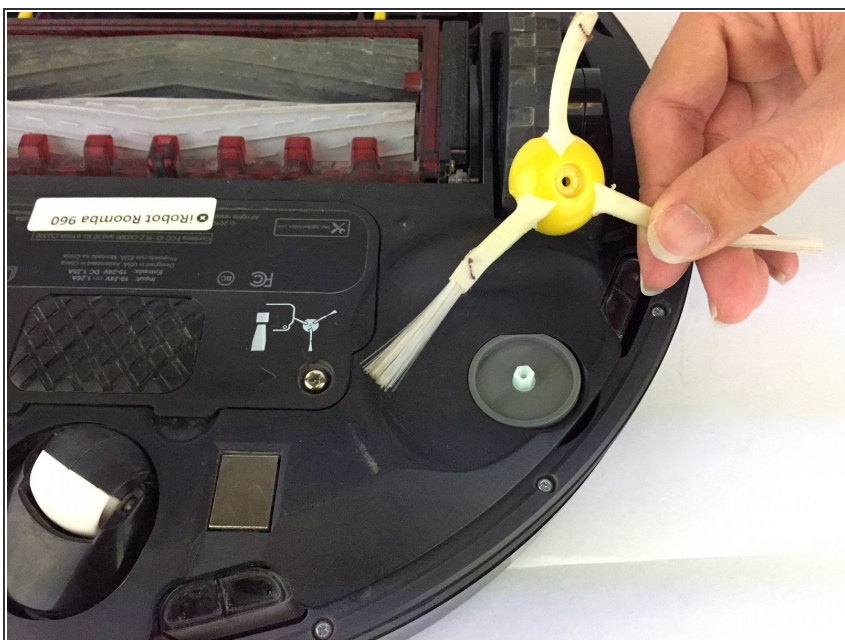
- Using the two black flaps located at the sides of the battery, pull it towards you.
- Carefully remove the battery.

Step 5 — Side-Brush



- With the Flathead 2.5mm screwdriver remove the 7.9mm screw from the side-brush.

Step 6



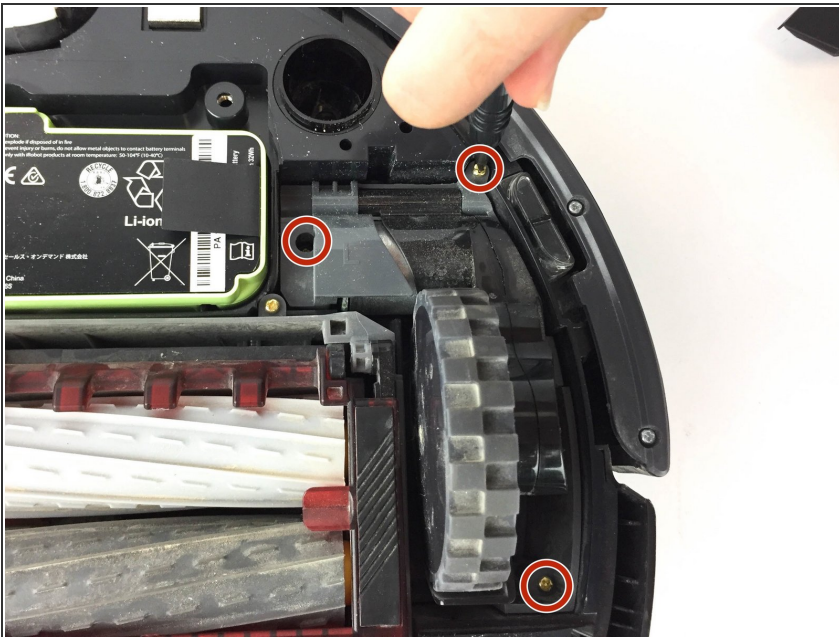
- Pull the side-brush towards you.
- Carefully remove the side-brush.

Step 7 — Side Wheels



- Using a Phillips #1 screwdriver, unscrew the two 11.4mm screws that hold the bottom cover.
- Lift to remove the plastic back panel.

Step 8



- Using a Phillips #1 screwdriver, remove the three gold 15.5 mm screws.

Step 9



- Carefully remove the wheel.

To reassemble your device, follow these instructions in reverse order.