



iRobot Roomba 980 Brush Module Replacement

You will be able to replace the brushes the Roomba uses to pick up the dirt.

Written By: Ernesto Rodriguez Romero



INTRODUCTION

The brush module on the roomba does the majority of the cleaning and it can easily get tangled in various household fibers such as hair causing it to stop turning. When this happens it is necessary to remove the module and clean it as outlined in the troubleshooting section.



TOOLS:

- [Phillips #1 Screwdriver](#) (1)
-

Step 1 — Battery



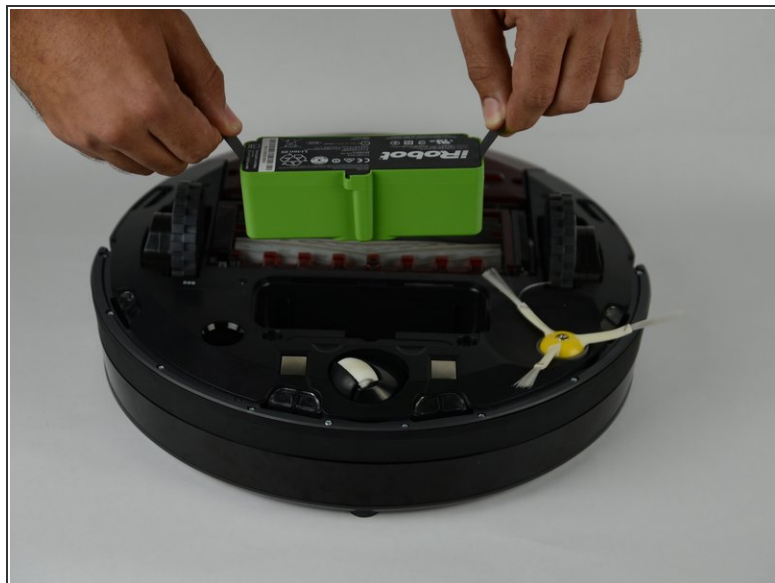
- Flip over the device and remove the (2) 11.5mm screws using the Phillips #1 screwdriver.

Step 2



- Unscrew the back plate using a Phillips#1 head screwdriver.
- Carefully lift the panel up once the screws are removed.

Step 3



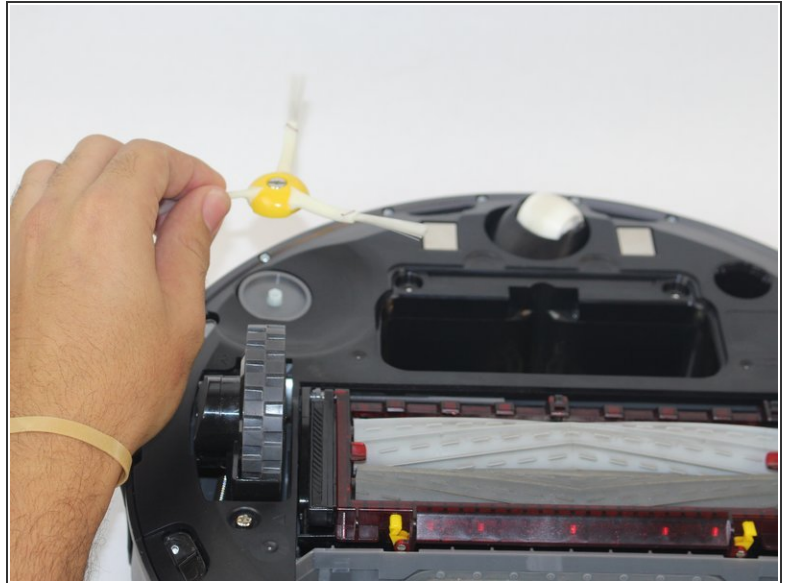
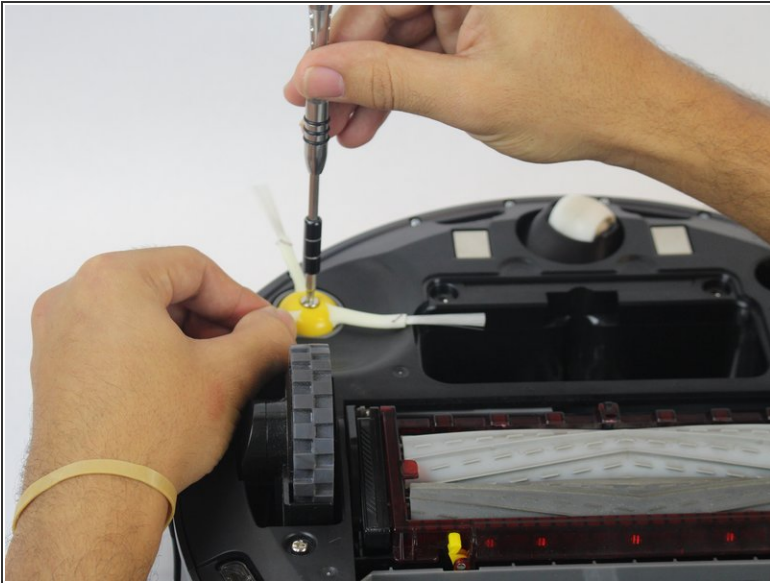
- With both hands, grab the 2 black tabs on each ends of the battery.
- Pull the tabs upwards to remove the battery.

Step 4 — Brush Module



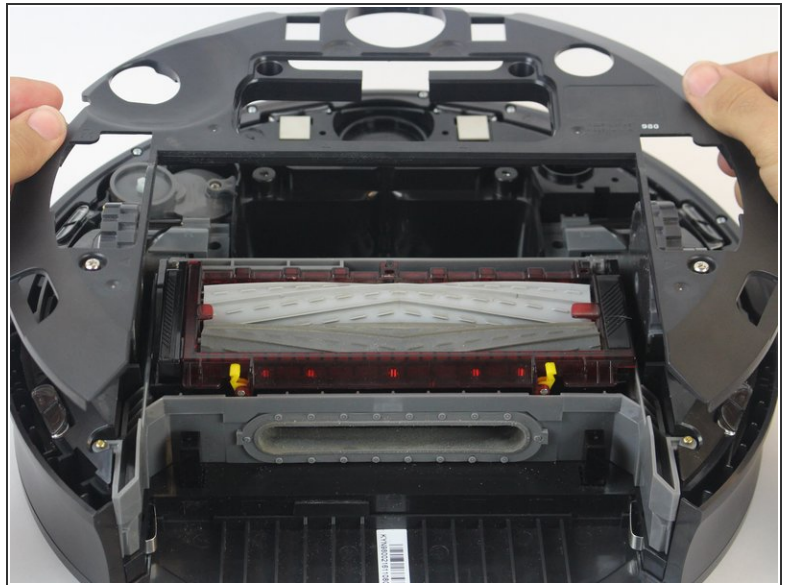
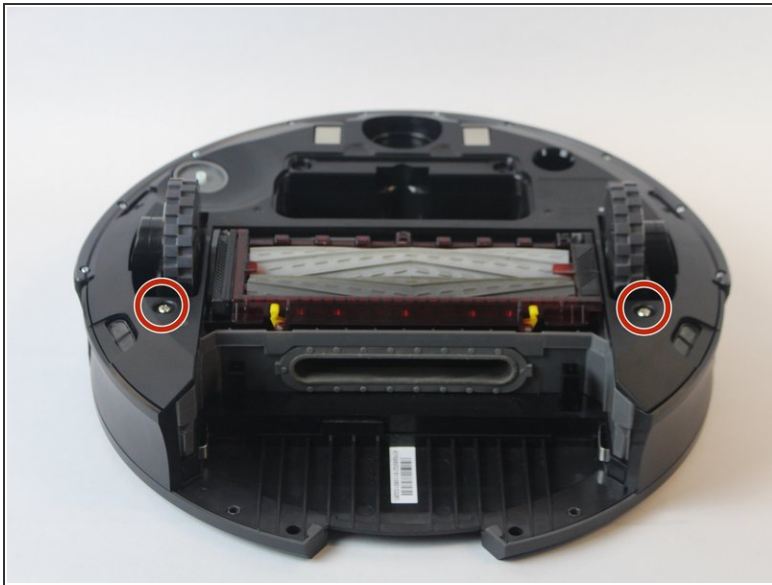
- Press down on the button on the rear of the device.
- Pull bin towards you to remove it.

Step 5



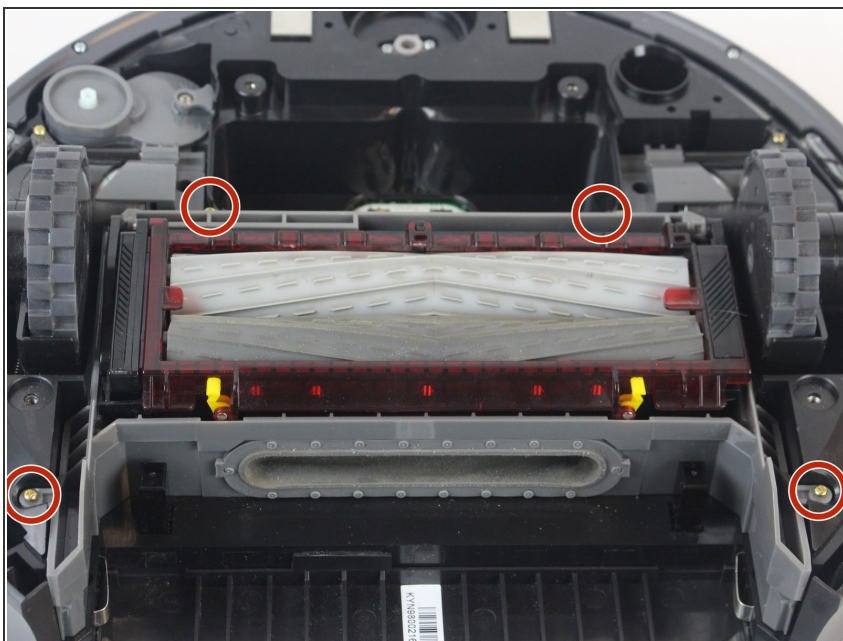
- Loosen the screw holding the side brush in place.
- ⓘ The screw is attached to the side brush and does not come out completely.
- Lift the side brush.

Step 6



- Remove the (2) 11.5mm Phillips #1 screws holding down the bottom plate.
- Carefully lift the bottom plate.

Step 7



- Remove the (4) 15.8mm Phillips #1 gold screws around the brush module.

Step 8



- Lift the brush module carefully using both hands.

To reassemble your device, follow these instructions in reverse order.