



iRobot Roomba 980 Motherboard Replacement

You will be able to remove the device's motherboard and replace it in case it is damaged.

Written By: Ernesto Rodriguez Romero



INTRODUCTION

Replacing the motherboard is a very long process and if not done carefully it could damage the device irreparably. Proceed with caution when handling the connectors and pins that attach the motherboard to the rest of the device.

TOOLS:

- [Phillips #1 Screwdriver](#) (1)
 - [iFixit Opening Tools](#) (1)
 - [Tweezers](#) (1)
-

Step 1 — Battery



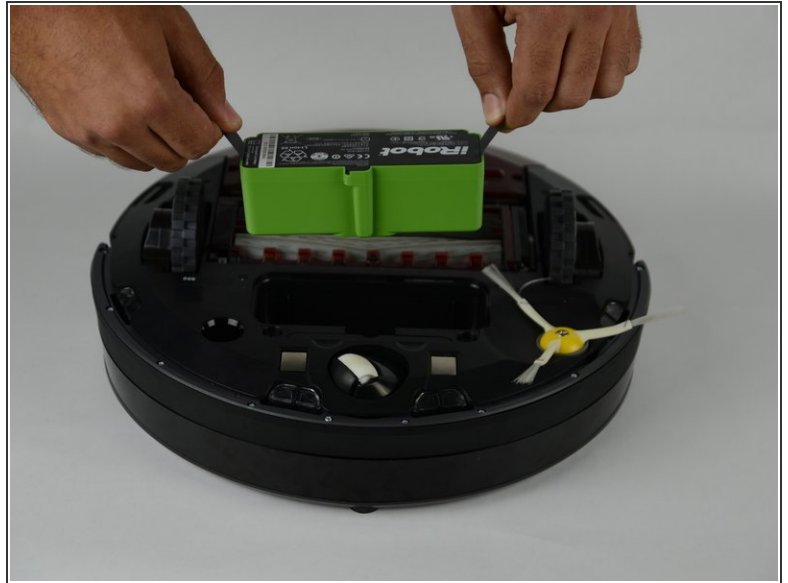
- Flip over the device and remove the (2) 11.5mm screws using the Phillips #1 screwdriver.

Step 2



- Unscrew the back plate using a Phillips#1 head screwdriver.
- Carefully lift the panel up once the screws are removed.

Step 3



- With both hands, grab the 2 black tabs on each ends of the battery.
- Pull the tabs upwards to remove the battery.

Step 4 — Motherboard



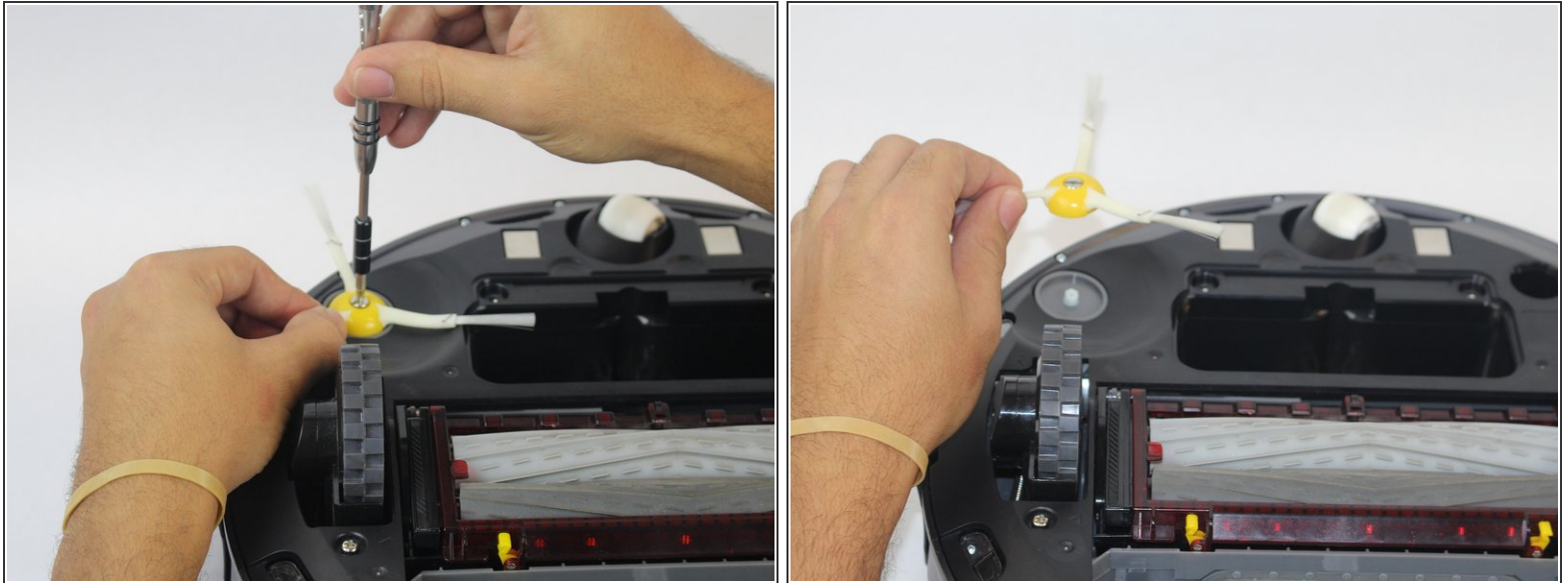
- Remove the dust bin by pressing down on the rear button on the device.
- Pull the bin towards you to remove it.

Step 5



- Insert the opening tool in the back of the device under the wedge.
 - Slowly pry the plate loose and lift it from the device.
- i** The face plate is only designed to be removed back to front.

Step 6



- Loosen the screw holding the side brush in place.
- ⓘ The screw is attached to the side brush and does not come out completely.
- Lift the side brush.

Step 7



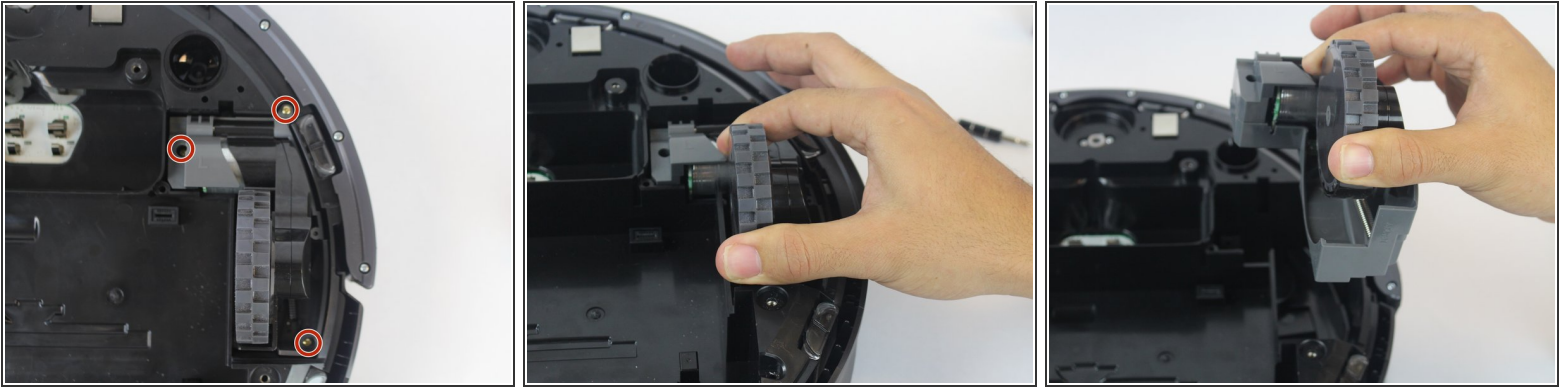
- Remove the (2) 11.5mm Phillips #1 screws holding down the bottom plate.
- Carefully lift the bottom plate.

Step 8



- ⓘ Remove the Brush Module for greater ease of access.
- Remove the (4) 15.8mm gold screws around the brush module using the Phillips #1 screwdriver.
- Lift the brush module carefully using both hands.

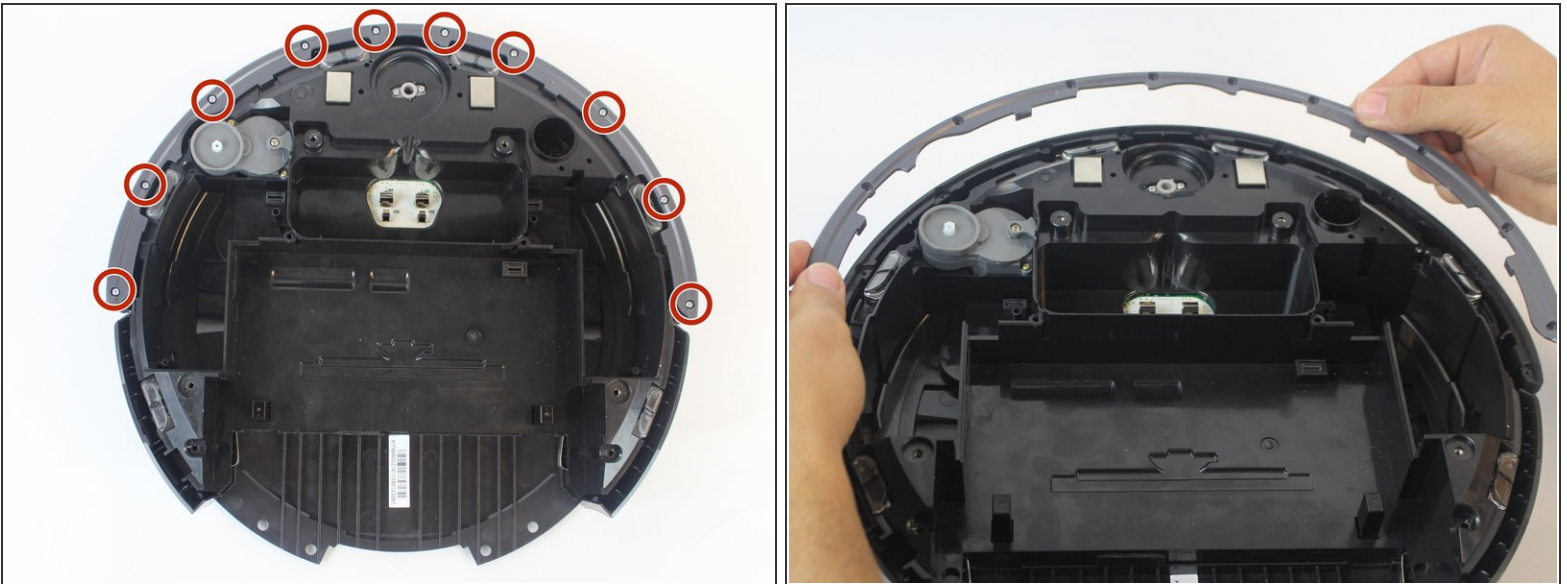
Step 9



i Remove 2-side wheels for greater ease of access.

- Locate the (3) three 15.8mm gold Phillips #1 screws and unscrew them.
- Lift the wheel module removing it from the vacuum.
- Remove the other wheel by repeating these steps.

Step 10



- Remove the (10) ten 6.1mm silver screws.
- Lift the bottom guard off the front sensor panel by pulling it upwards.

Step 11



- Lift the 2 corner guards at the rear of the device by lifting it and popping them out.
- Pull the front sensor away slowly from the vacuum.

⚠ The cable connecting the front sensor to the Roomba is delicate, so proceed with caution.

Step 12



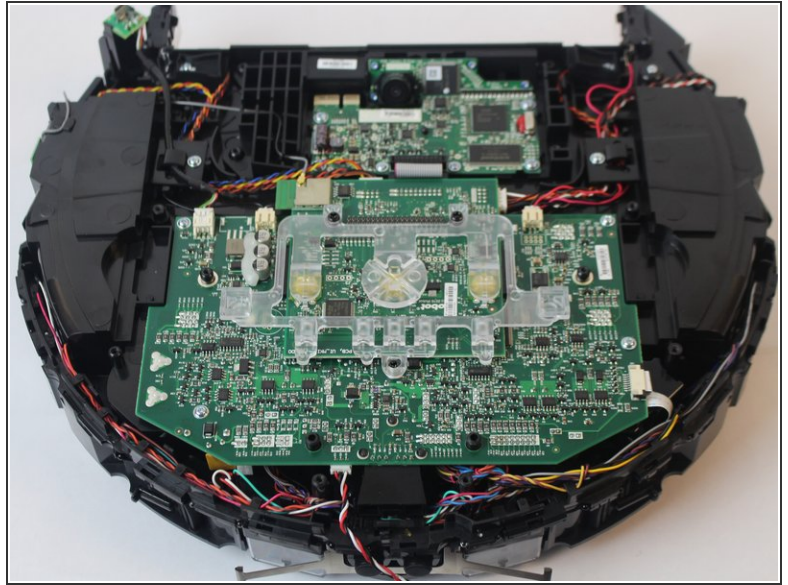
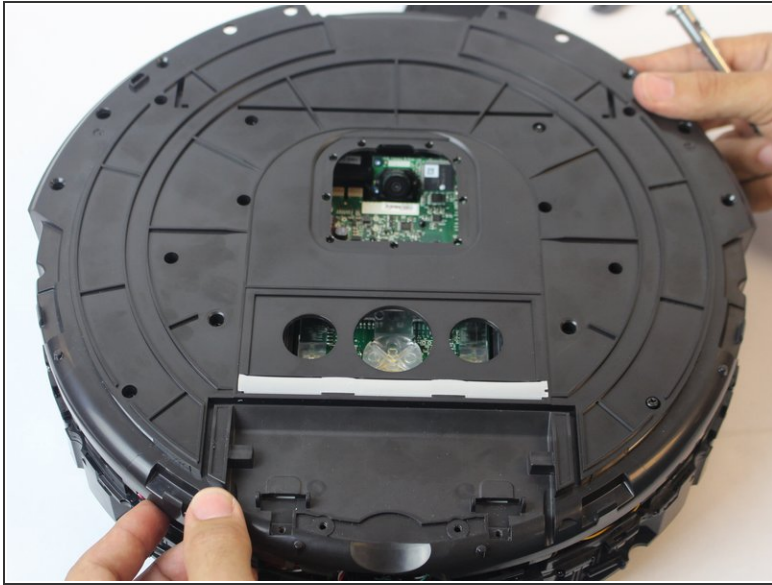
- Flip the sensor over and remove the (2) two 3.8mm silver screws holding the sensor to the panel.
- Once removed, pull the panel away carefully.

Step 13



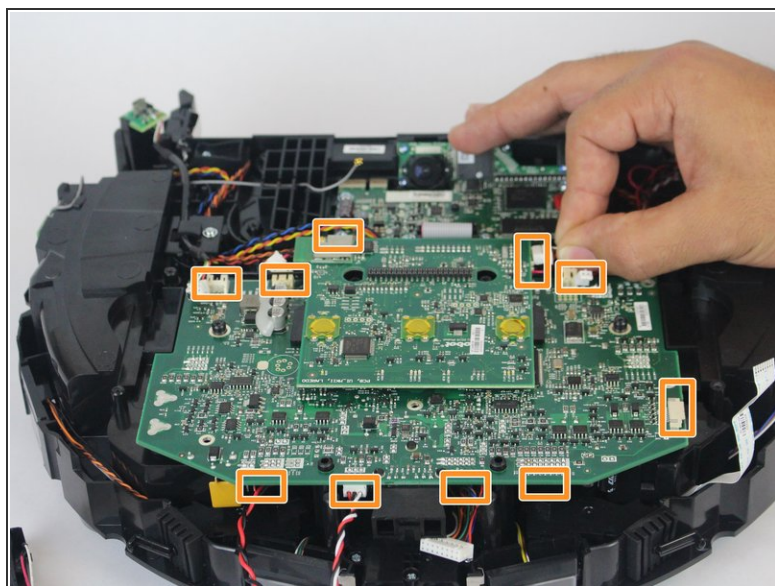
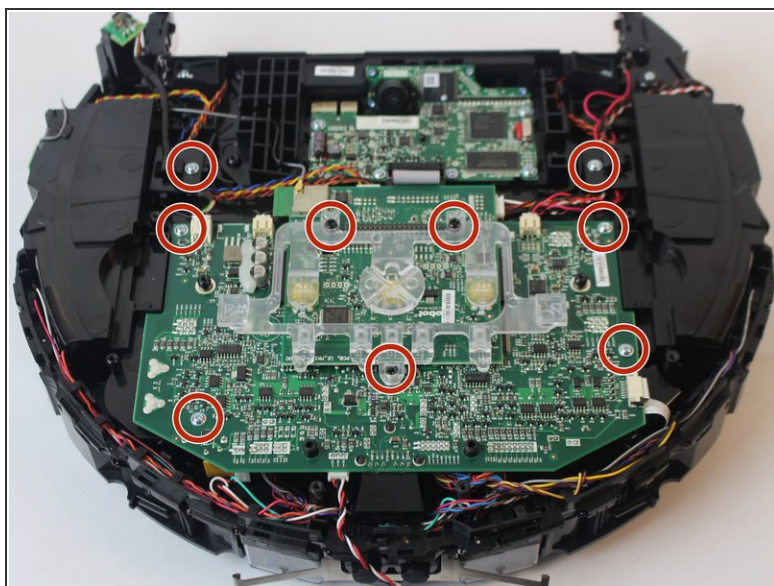
- Remove the (14) fourteen 6.6mm black screws shown in the pictures that are holding down the top plate.
- Push the lip back towards the logo to expose and remove the (2) two 6.6mm black screws found under it.

Step 14



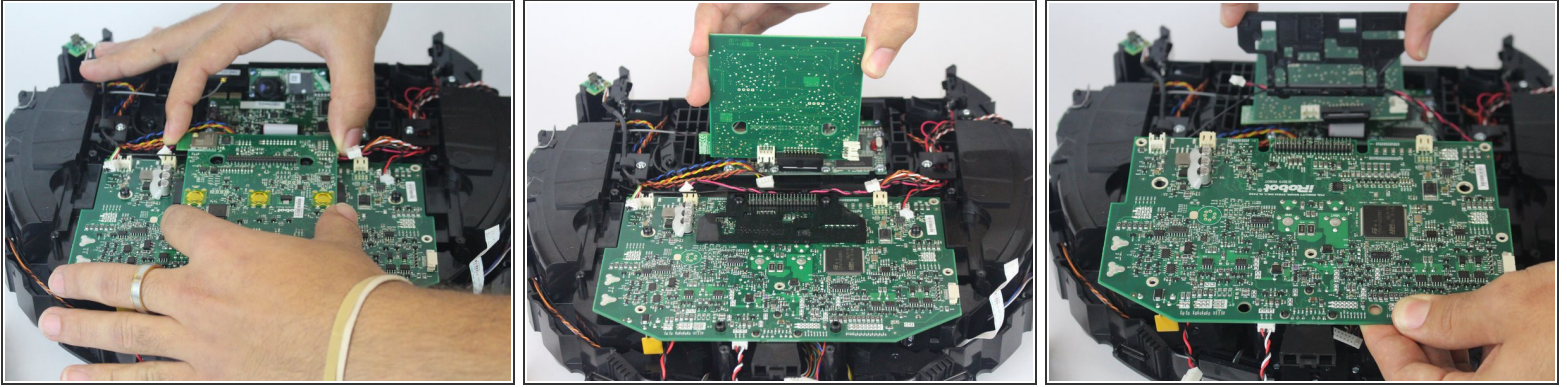
- Lift the top plate slowly being careful not to damage the vacuum components while exposing the motherboard.

Step 15




- Remove the (9) nine 6.4mm silver screws holding the motherboard to the vacuum body and the clear plastic guard.
- Carefully remove the connector-clips that are attached to the motherboard.
- ⓘ Some connectors will be difficult to remove.

Step 16

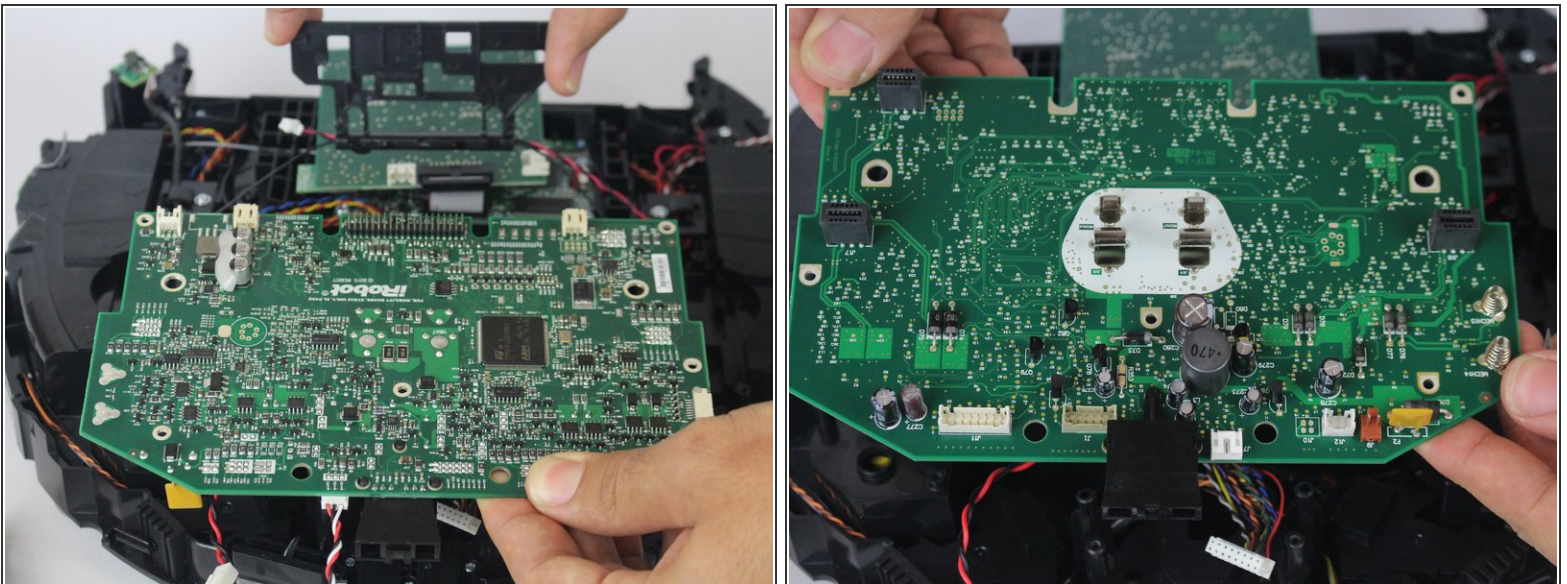


- Using both hands, lift the motherboard connected to the camera away from the device's main motherboard.

 ***IMPORTANT*** Only lift it upwards to avoid bending the pins and causing further damage to the device's electronics.

- Remove the black plastic guard that is placed in between the 2 boards.

Step 17



- Lift the main motherboard off the vacuum upward. The screw inserts are holding it in place so it will have to be lifted evenly.
- Remove the motherboard from your device.

This document was generated on 2020-04-17 08:50:35 PM (MST).

To reassemble your device, follow these instructions in reverse order.