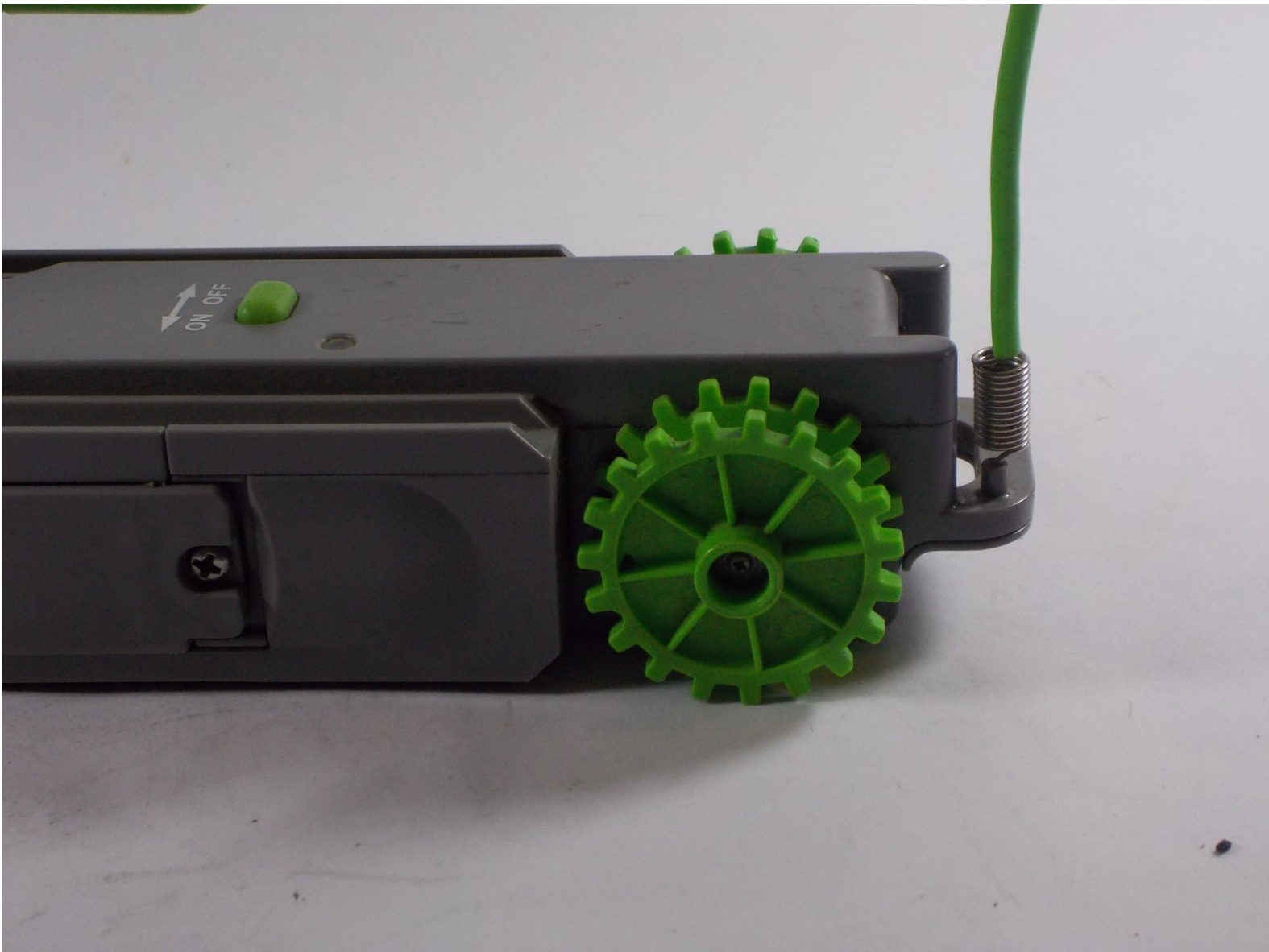




# iRobot looj 120 Wheel Replacement

If the wheels on your iRobot looj 120 are damaged beyond repair, this guide will show you how to replace them.

Written By: Joshua

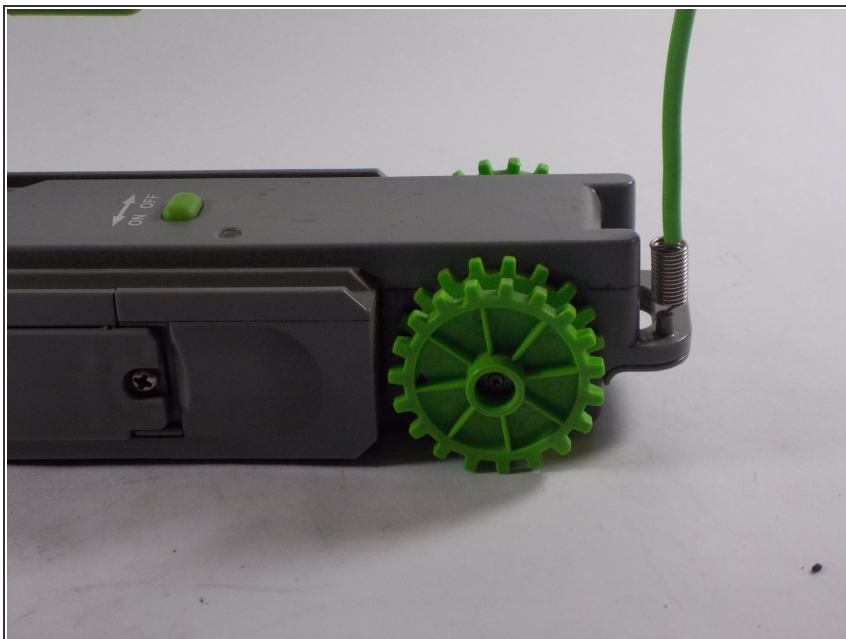




## TOOLS:

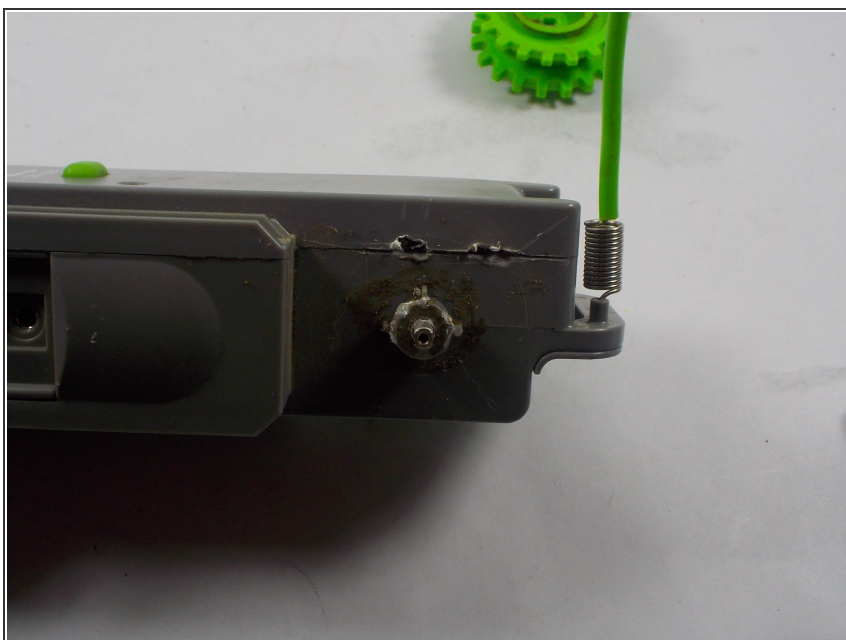
- [Pro Tech Toolkit](#) (1)
-

## Step 1 — Replacing the wheels



- To remove the wheel simply unscrew the screw in the center of the wheel

## Step 2 — Replacing the wheel



- You can then pull the wheel off revealing where the wheel is inserted.
- You can then take your replacement wheel and insert the wheel onto the axle

To reassemble your device, follow these instructions in reverse order.