



iVIEW-754TPC Logic Board Replacement

Replace the logic board in your iVIEW-754TPC.

Written By: Robert Clark



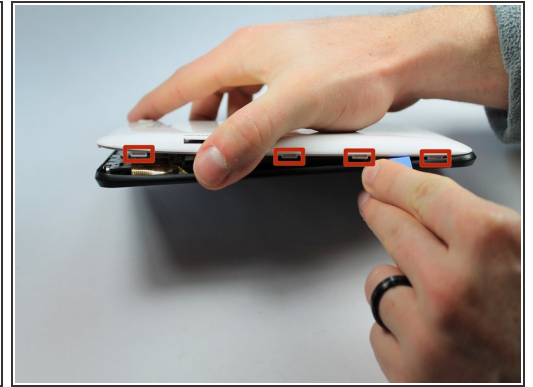
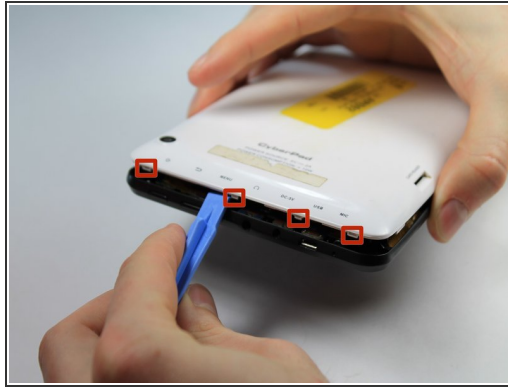
INTRODUCTION

A bad logic board can cause a large number of problems, ranging from slow performance to a completely non-functional device. Use this guide to replace a faulty logic board.

TOOLS:

- [iFixit Opening Tools](#) (1)
 - [Spudger](#) (1)
 - [Tweezers](#) (1)
 - [Phillips #2 Screwdriver](#) (1)
 - [Magnetic Project Mat](#) (1)
-

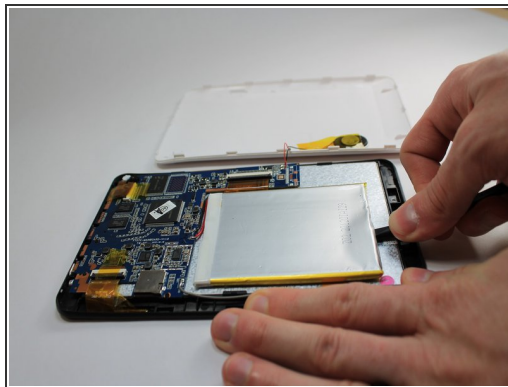
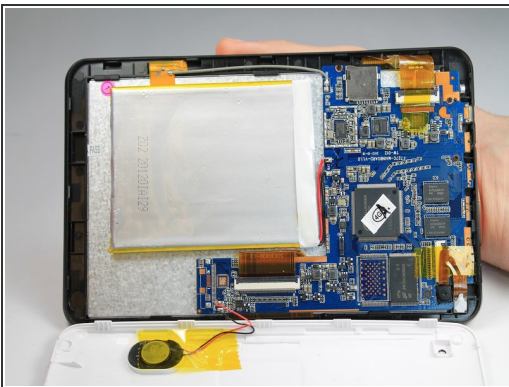
Step 1 — Rear Panel



i Before disassembling your tablet, make sure it is powered off.

- Use plastic opening tool to release the clips holding the device together. The clips will take a small amount of pressure to release. Once you have the plastic opening tool inserted, use a twisting action to release the clips. Start from bottom of device and work all the way around.

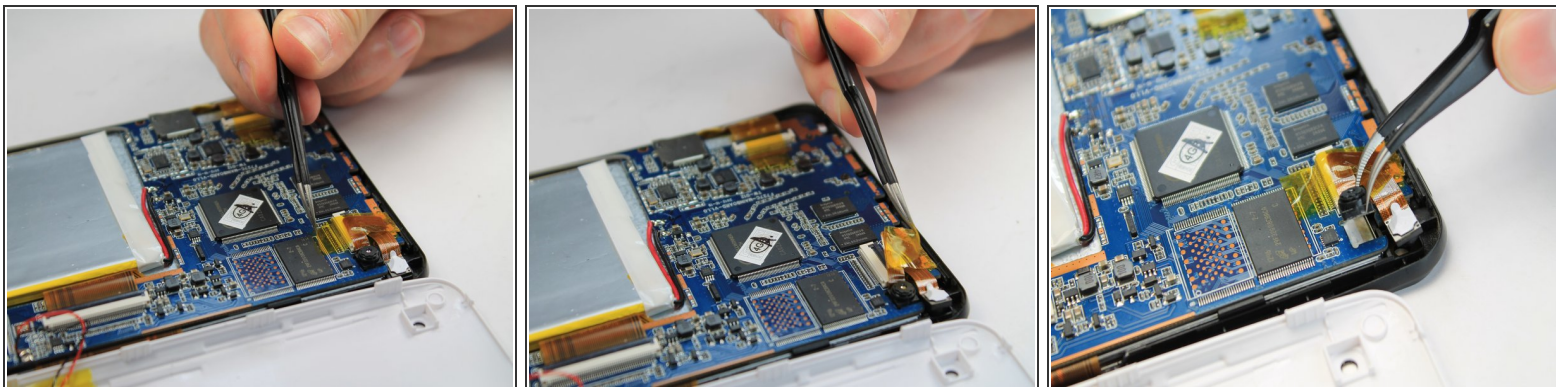
Step 2 — Remove Battery



- Use flat side of the spudger to get under battery and use pressure to release from glue. Do this all the way around battery until it comes off.

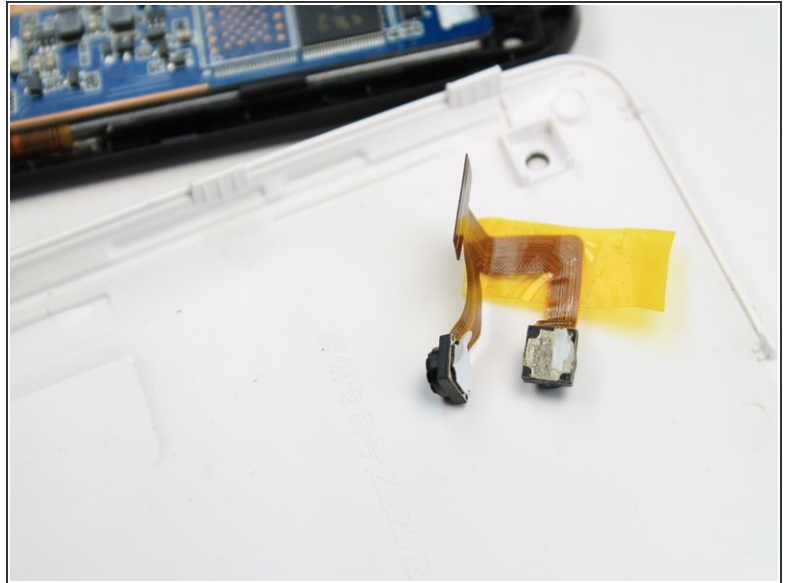
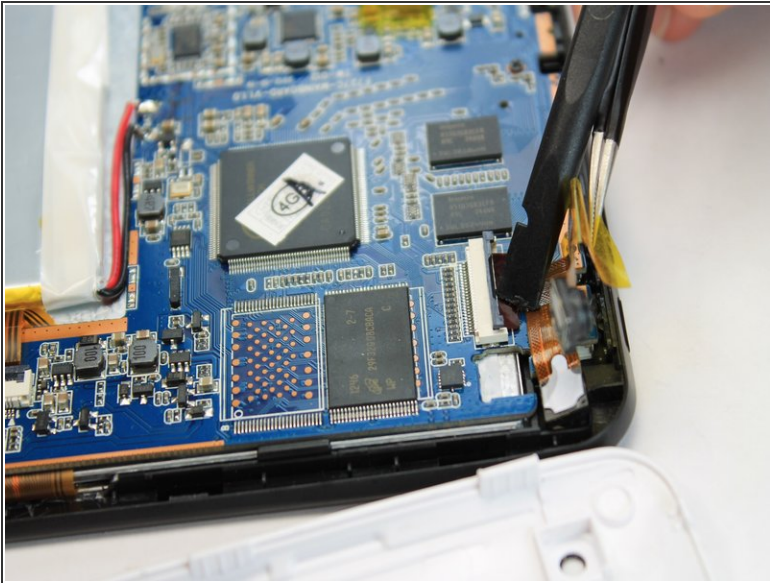
i At this point do not attempt to fully remove the battery as it is still attached to the logic board.

Step 3 — Camera Assembly



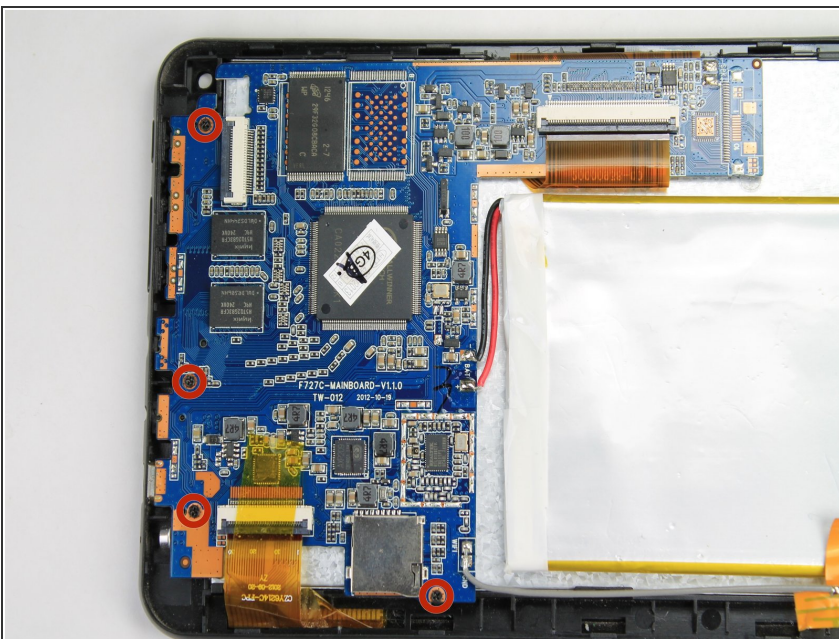
- The camera module is located directly under the top right corner of the back cover.
- Peel back the tape holding down the camera ribbon connector using a pair of tweezers.
 - ⓘ As you peel the tape backward, the front facing camera may come out, this is not an issue.
- If the front facing camera does not come out, gently lift it out with a pair of tweezers

Step 4 — Remove Camera



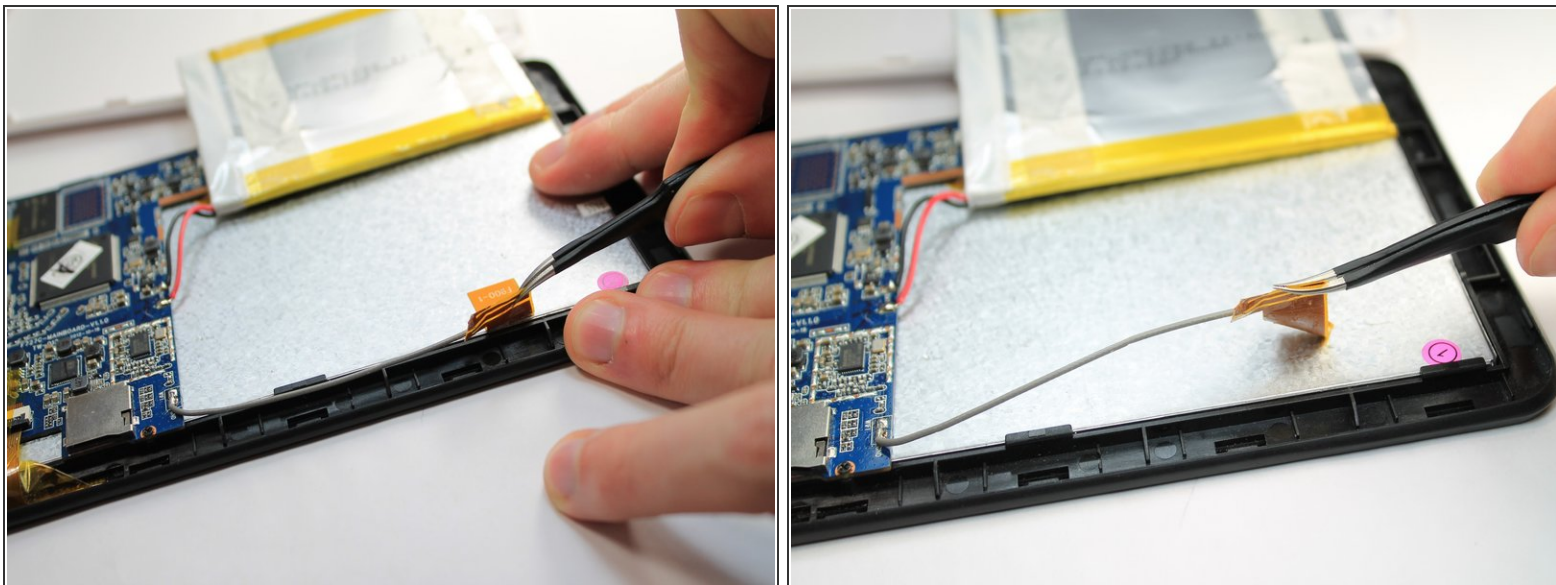
- Use a spudger to lift flap on top of the camera ZIF adapter.
- At this point the camera module can be easily removed with a pair of tweezers.
- ❗ During reassembly, make sure you put the ZIF adapter snugly back into its socket and secure the flap.

Step 5 — Logic Board



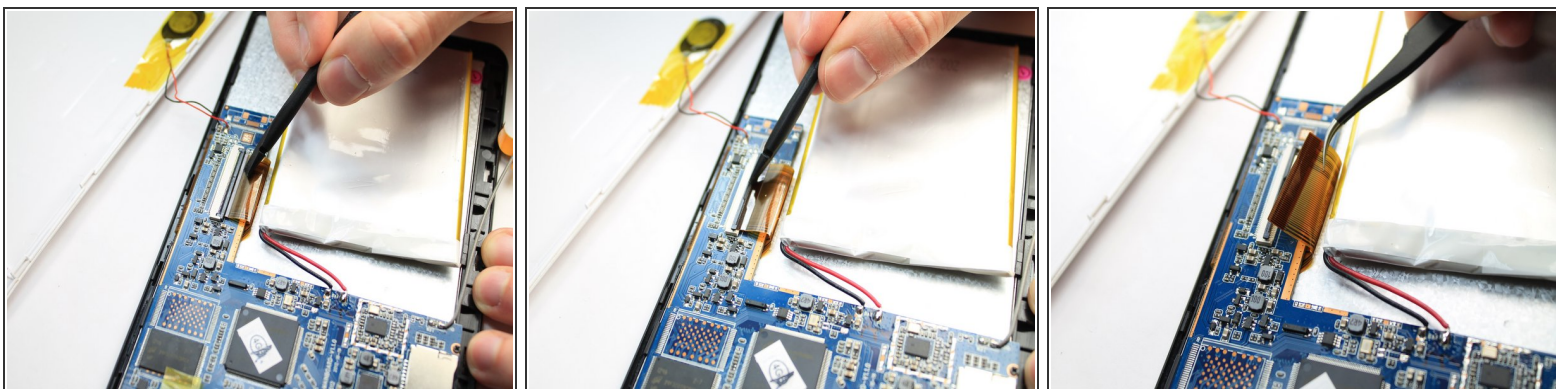
- Remove the four 2.2mm Phillips screws holding the logic board in place. Place the screws on the iFixit magnetic project mat.

Step 6 — WIFI Antenna



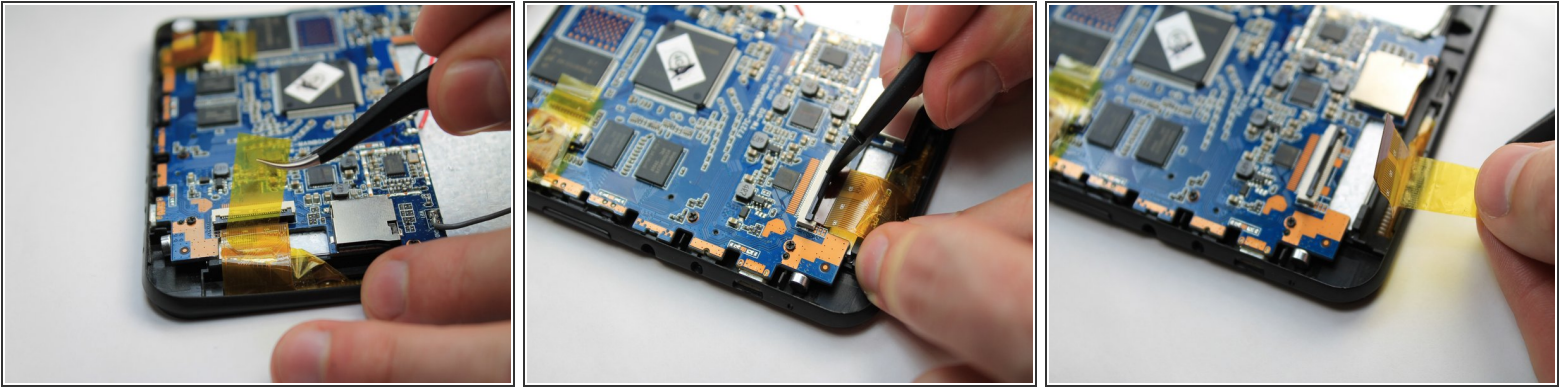
- Gently peel the WIFI Antenna up using a pair of tweezers.

Step 7 — Disconnect LCD



- Use a spudger to lift the flap on top of the LCD ZIF socket.
- Gently remove the ribbon cable from the socket using a tweezers.

Step 8 — Disconnect Digitizer




- Use a spudger to lift the flap on top of the digitizer ZIF socket.
- Gently pull the tape attached to the ribbon cable to remove the cable from its socket.

Step 9 — Remove Logic Board



- Gently slide the spudger below the logic board at the left side nearest the battery. Lift upward and away from the power button and bottom connectors.

 The battery is still attached to the logic board. Be careful to not tear the two apart during removal.

To reassemble your device, follow these instructions in reverse order.