



# ilo 1Gb Mp3 Player External volume button and hold switch Replacement

How to remove and replace the rocking volume button and the hold switch.

Written By: Joe



## INTRODUCTION

The Volume button is a rocking button held on by a central axis in the button socket. The hold switch internally is four plastic clips that slide along the edge of its socket.

---

### TOOLS:

- [Phillips #00 Screwdriver](#) (1)
  - [iFixit Opening Tools](#) (1)
-

## Step 1 — Belt Clip



- Remove the belt clip by pulling the clip casing up and away from the device starting at the top over the slightly protruding headphones jack.

## Step 2 — Battery Cover



- Remove the battery cover by gently pushing inward on the arrow on the cover.
- While maintaining pressure push the cover upward.

## Step 3 — Battery



- Remove the Battery from the socket
- ⓘ When installing the battery take note of the signs displayed in the socket to determine which direction the negative and positive ends should be.



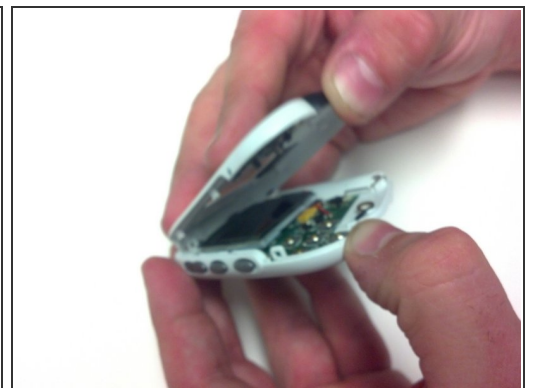
## Step 4 — ilo 1 Gb Mp3 Player Motherboard



- Under the cover you will find Three (3) 5mm screws that will need to be removed. For this you will need to use the PH00 screw tip included in your iFixit kit. Make sure to keep track of these screws as they will need to be reinserted during the reassembly of your device.

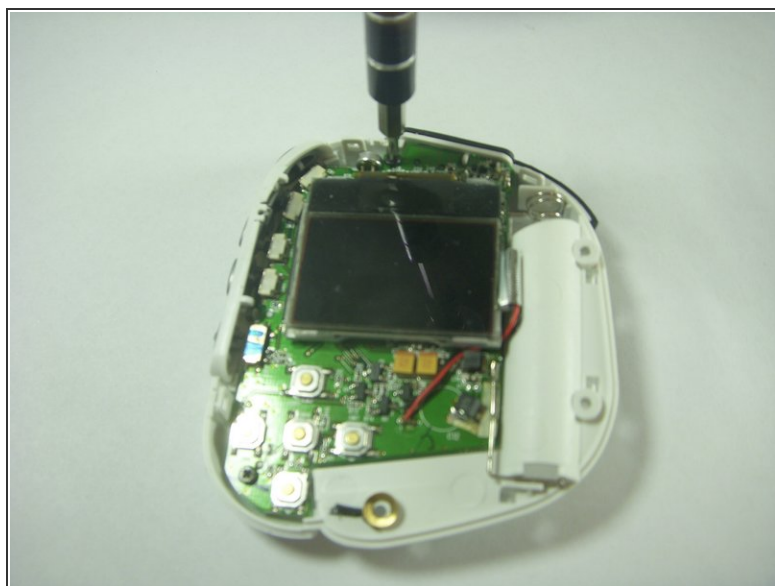
**i** These screws are different from the two other screws from the interior

## Step 5



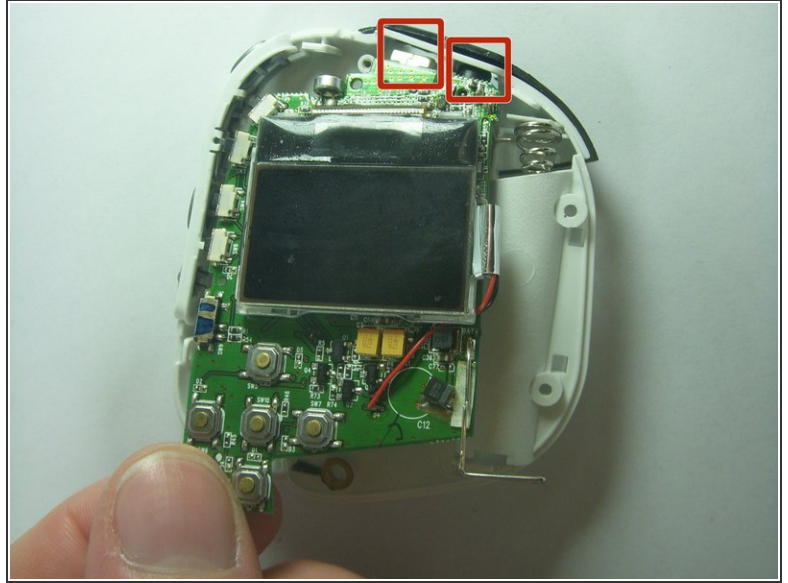
- Separate the front housing from the back housing using your thumbs. Carefully pry around the edge of the bottom of device then be sure to unhook the clip inside just below the hold switch.

## Step 6



- Once you have removed the front housing and exposed the internal board and screen locate and Remove the Two (2) 4mm PH00 screws on the board.
- ⓘ One is located in the top middle above the screen and the other is located at the bottom left between the Stop and Back buttons.

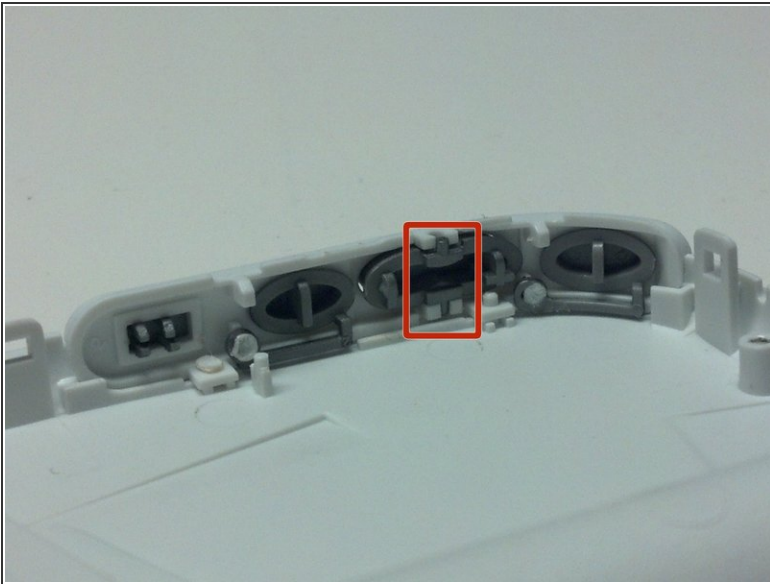
## Step 7



- Once those screws are removed, gently remove the board from the rear casing.

⚠ When installing the motherboard into the case be especially careful with the headphone and USB jacks located at the top of the motherboard. These should be slid into their sockets first.

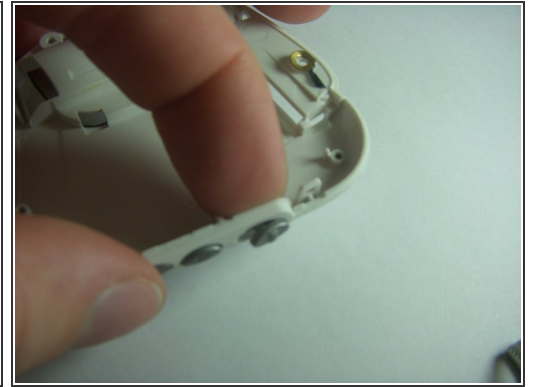
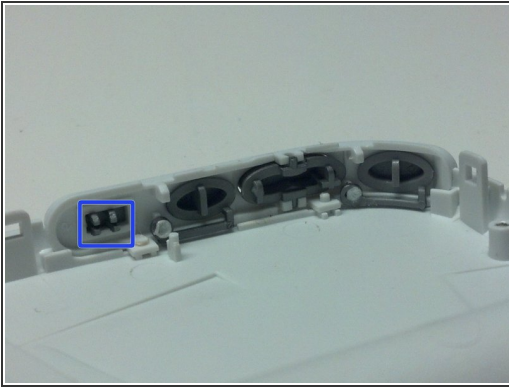
## Step 8 — Volume Rocker



- Remove the Volume button from its rocker socket by gently pushing in on the button until it pops out of the two sockets.



## Step 9 — Hold Switch



- Remove Hold Switch from Socket by squeezing the prongs that hold the button in the socket together and push the button outward.

To reassemble your device, follow these instructions in reverse order.