



ilo 1Gb Mp3 Player ilo 1 Gb Mp3 Player Motherboard Replacement

How to disassemble the ilo 1 Gb Mp3 Player for motherboard replacement.

Written By: tj курт01



INTRODUCTION

In this Disassembly guide we tackle the ilo 1gb mp3 player. Its not a particularly difficult project so not many tools or in depth knowledge is required. So lets jump right in!

TOOLS:

- [Phillips #00 Screwdriver](#) (1)
-

Step 1 — Belt Clip



- Remove the belt clip by pulling the clip casing up and away from the device starting at the top over the slightly protruding headphones jack.

Step 2 — Battery Cover



- Remove the battery cover by gently pushing inward on the arrow on the cover.
- While maintaining pressure push the cover upward.

Step 3 — Battery



- Remove the Battery from the socket
- ⓘ When installing the battery take note of the signs displayed in the socket to determine which direction the negative and positive ends should be.

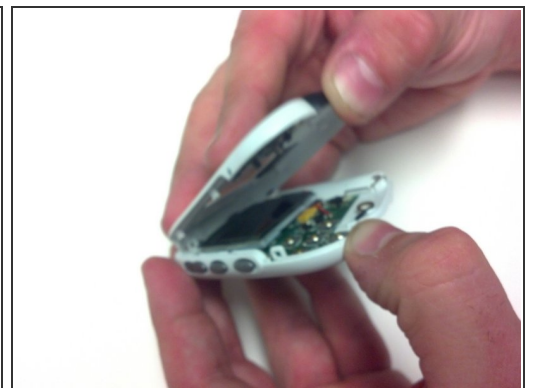
Step 4 — ilo 1 Gb Mp3 Player Motherboard



- Under the cover you will find Three (3) 5mm screws that will need to be removed. For this you will need to use the PH00 screw tip included in your iFixit kit. Make sure to keep track of these screws as they will need to be reinserted during the reassembly of your device.

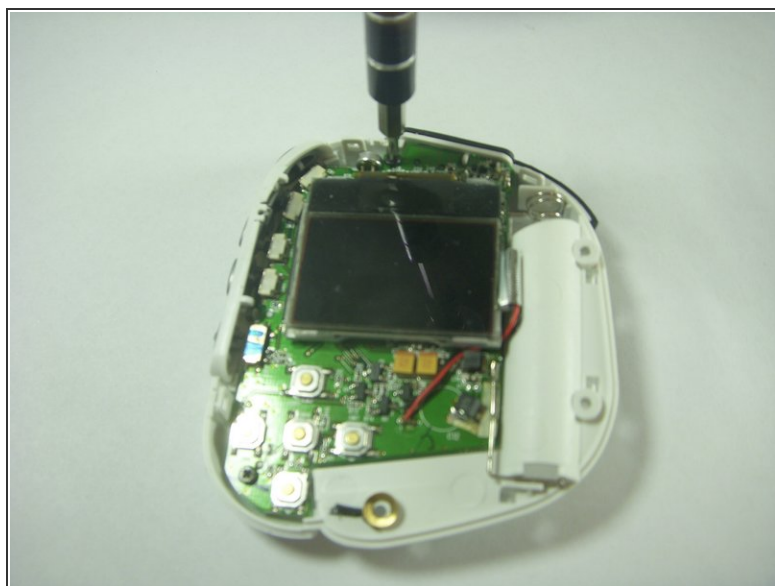
i These screws are different from the two other screws from the interior

Step 5



- Separate the front housing from the back housing using your thumbs. Carefully pry around the edge of the bottom of device then be sure to unhook the clip inside just below the hold switch.

Step 6



- Once you have removed the front housing and exposed the internal board and screen locate and Remove the Two (2) 4mm PH00 screws on the board.
- ⓘ One is located in the top middle above the screen and the other is located at the bottom left between the Stop and Back buttons.

Step 7



- Once those screws are removed, gently remove the board from the rear casing.

⚠ When installing the motherboard into the case be especially careful with the headphone and USB jacks located at the top of the motherboard. These should be slid into their sockets first.

To reassemble your device, follow these instructions in reverse order.