



liftmaster garage will not open, red/yellow led blink and beep

Liftmaster garage door was blinking/beeping and would not open. This guide is to replace the 2 failing capacitors in the opener to fix the issue.

Written By: Parnell



INTRODUCTION

I have a liftmaster 8500 and one day I got home, the opener wouldn't open the door. I heard a faint beep, so I went inside and found the wired opener (888LM) was blinking both red/yellow lights and beeping constantly. The troubleshooting guide said the main opener's board was bad. Ordered and replaced that (large cost) and still didn't change the issue. Figured I would pull this opener apart and poke around. Bulging caps were immediately spotted. Figured ~\$2 in parts was worth a shot. The replacement opener is ~\$45 retail.



TOOLS:

- [Solder](#) (1)
- [Soldering Iron](#) (1)
- [Desoldering Pump](#) (1)
- [Philips Screwdrivers \(one normal, one small\)](#) (1)



PARTS:

- [JUWT1105MCD](#) (2)
Capacitor
Ordered off Digikey

Step 1 — Model and issue



- This is the door opener, 888LM. I had a constant red/yellow light blinking and a beep coming from the unit. Replacing the garage door opener main board, did not change anything. (screw is marked)

Step 2 — Remove opener and PCB



- Flip up the cover, remove the screw. Then slide the opener up the wall. Turn around and you'll see a wire attached to two screws. Remove those screws and pull up the back

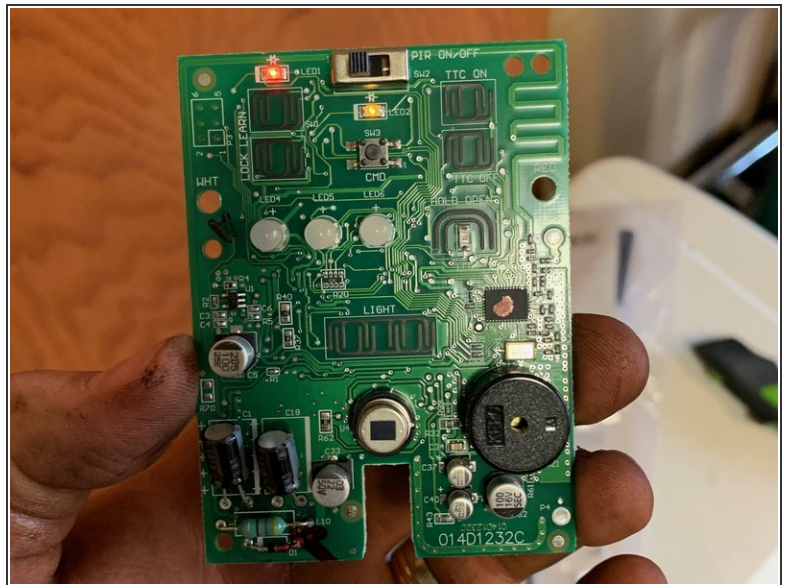
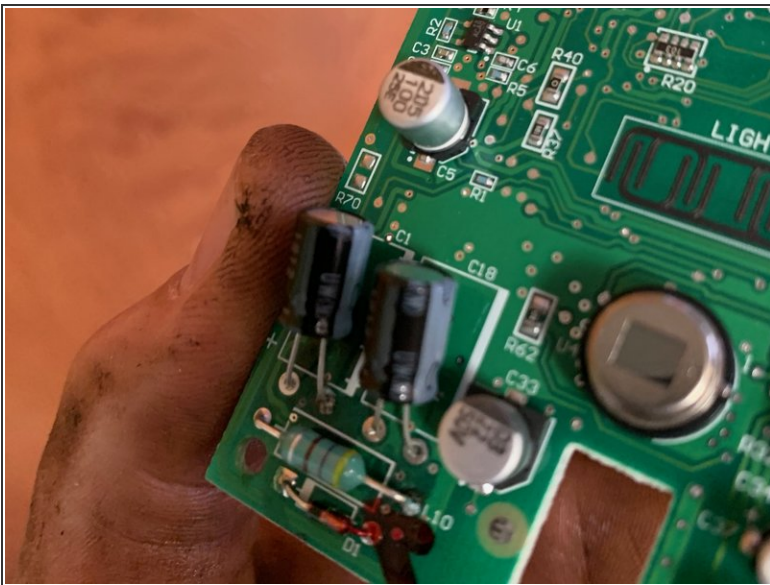
paper. You'll need to pry the PCB board up from the top and then pull up and out.

Step 3 — Replace caps



- I didn't take a pic, but the old capacitors were bulging slightly at the top. I ordered two off digikey, 1F 2.7V JUWT1105MCD. Old ones were 1F 2.7v, just make sure they'll fit the space/holes as they are close together.

Step 4 — Done and reinstall



- Caps replaced. Bend them slightly forward so they fit inside the opener casing. And reinstall in reverse.

Reinstalled after replacing caps and now my garage door functions like it should! I read some reviews off liftmaster's site for the 888LM and many complain of its short life and replacement.