



the Panasonic Lumix DMC-FX01 Camera Lens Replacement

Used to demonstrate how to replace the camera lens.

Written By: Caleb Fink



INTRODUCTION

The guide takes place from the Camera Lens Assembly guide.



TOOLS:

- [Phillips #00 Screwdriver](#) (1)
-

Step 1 — Battery



- Locate the memory card and battery card latch on the bottom of the camera.
- Slide the latch to the open position.

Step 2



- Open the battery latch, and slide the battery release lever to the right.

Step 3



- Remove the battery from the camera.

Step 4 — Rear Casing



- Using a size #00 Phillips screwdriver, remove the three 4.58 mm screws on the bottom of the camera.
- Use this screwdriver for all screws in the device.

Step 5



- Remove the 3.15 mm screw on the left side of the camera.

Step 6



- Remove the left side casing.

Step 7



- Remove the two 3.15 mm screws on the right side of the camera.

Step 8



- Remove the bottom right panel.

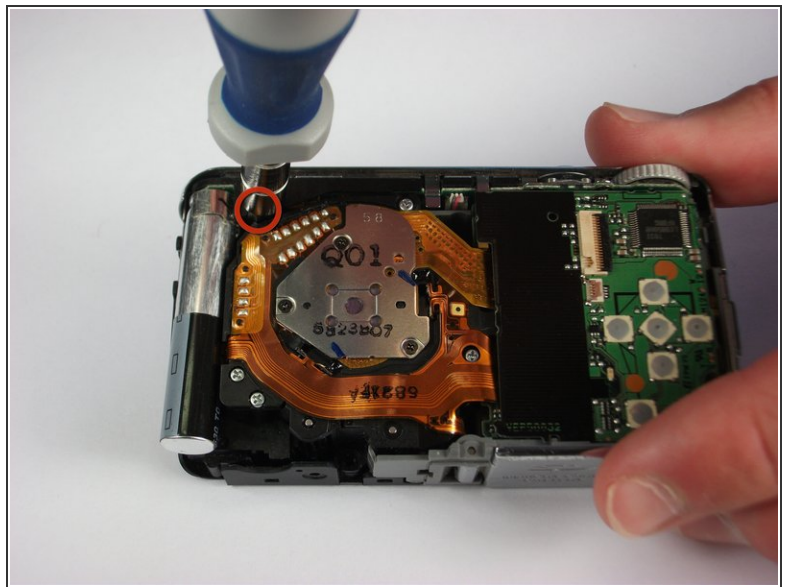
Step 9



- Gently remove the back casing.

⚠ Start at the bottom and carefully pry towards the top to get this piece free.

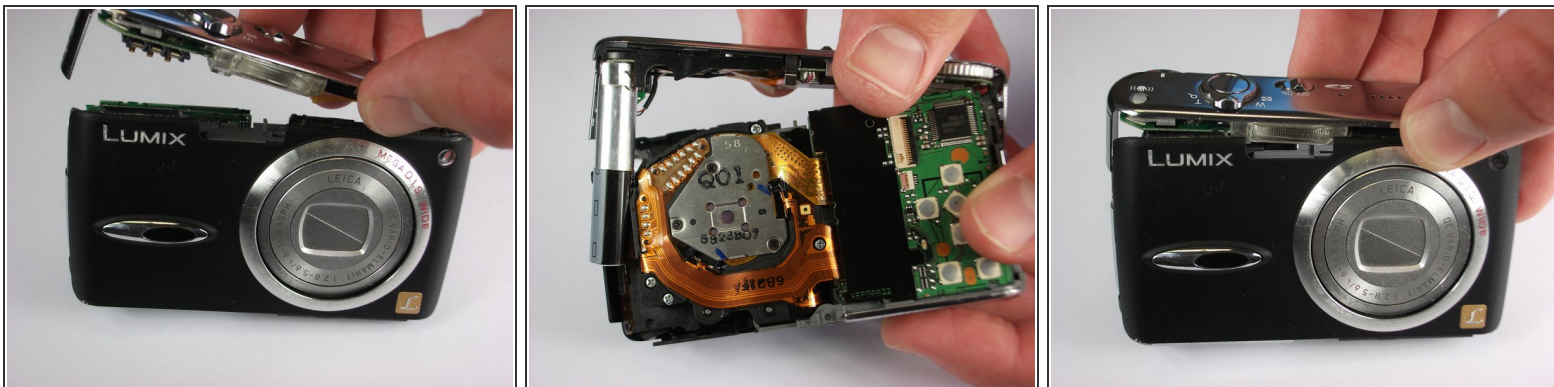
Step 10 — Front Casing



- Remove the two black 5.35 mm screws that hold in the front faceplate.

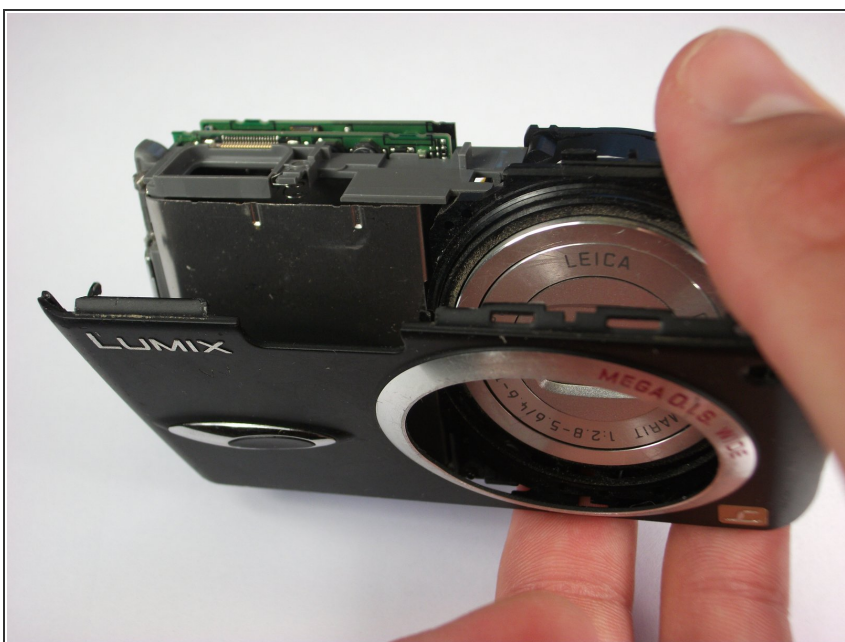
i There may be a third screw the the right of the lens assembly.

Step 11



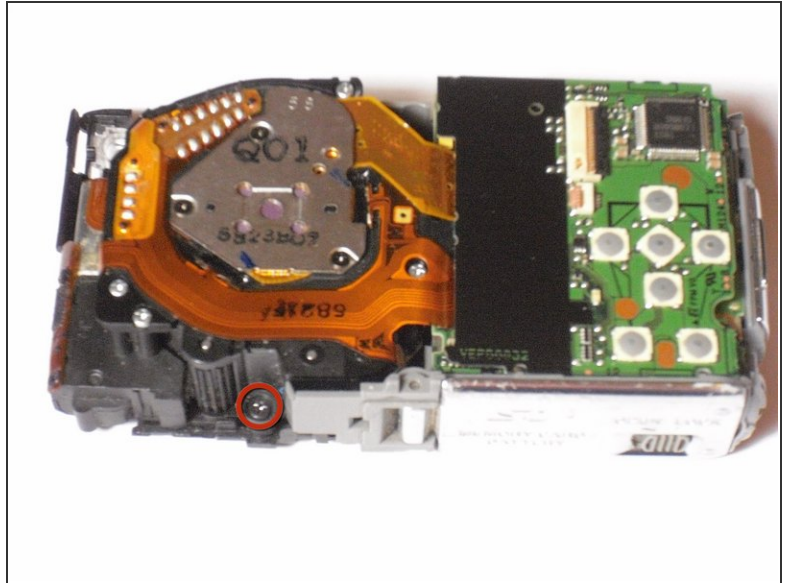
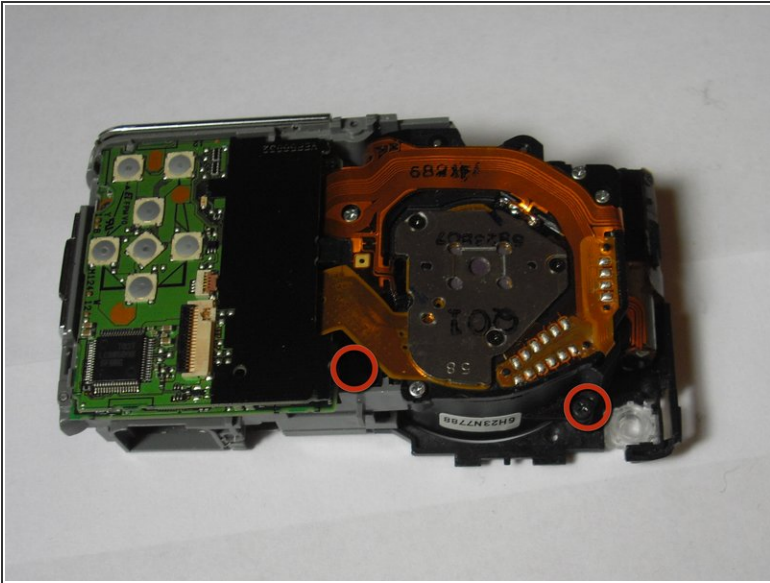
⚠ Carefully remove the upper assembly, which houses the buttons and the flash battery.

Step 12



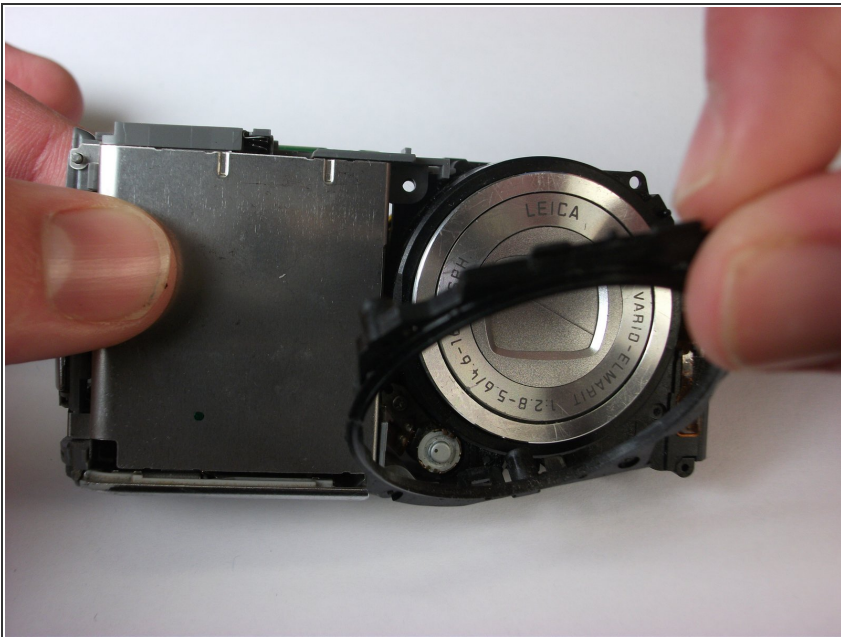
⚠ Carefully remove the front casing after verifying that the thin plastic around the lens is not still attached.

Step 13 — Lens Assembly



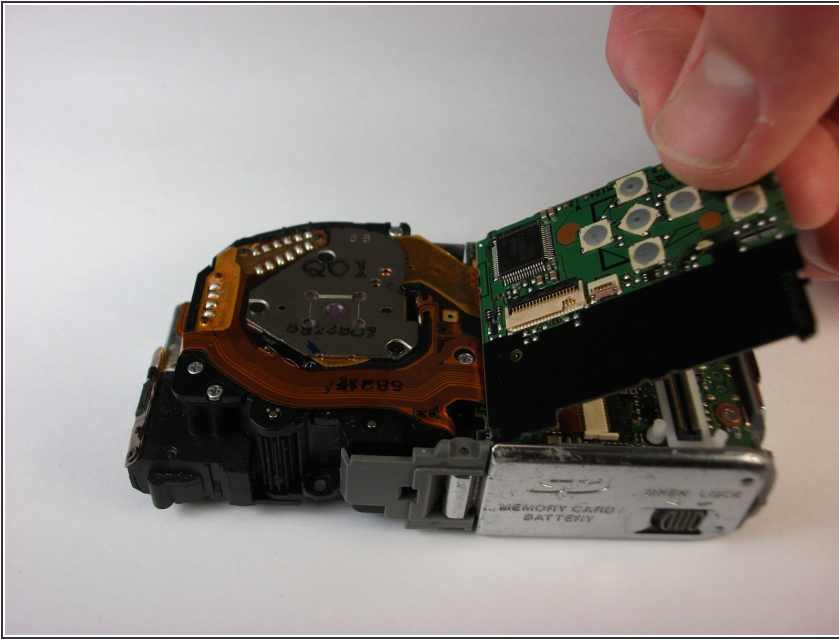
- Remove the three black 5mm screws attached to the lens frame.

Step 14



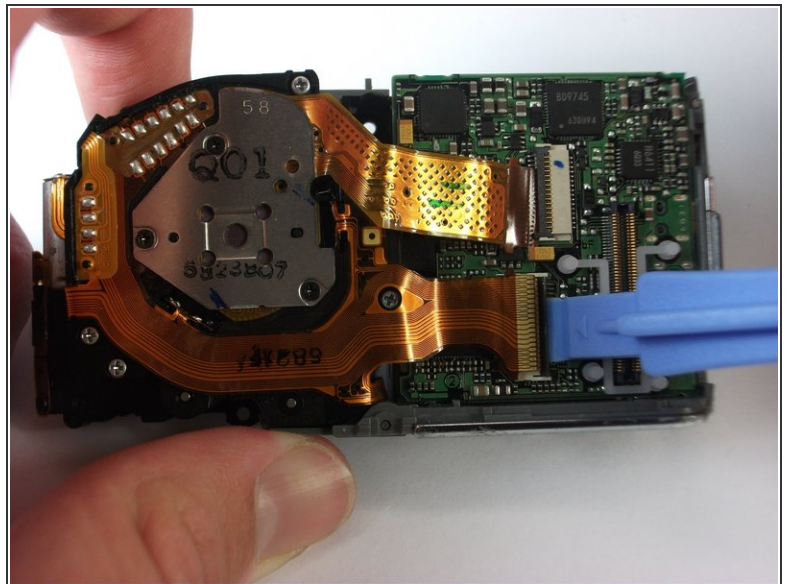
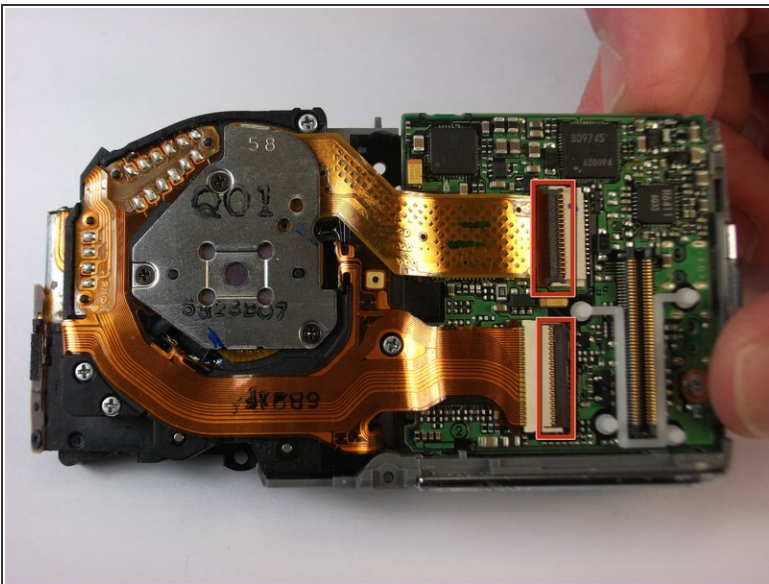
- Remove the lens frame.

Step 15



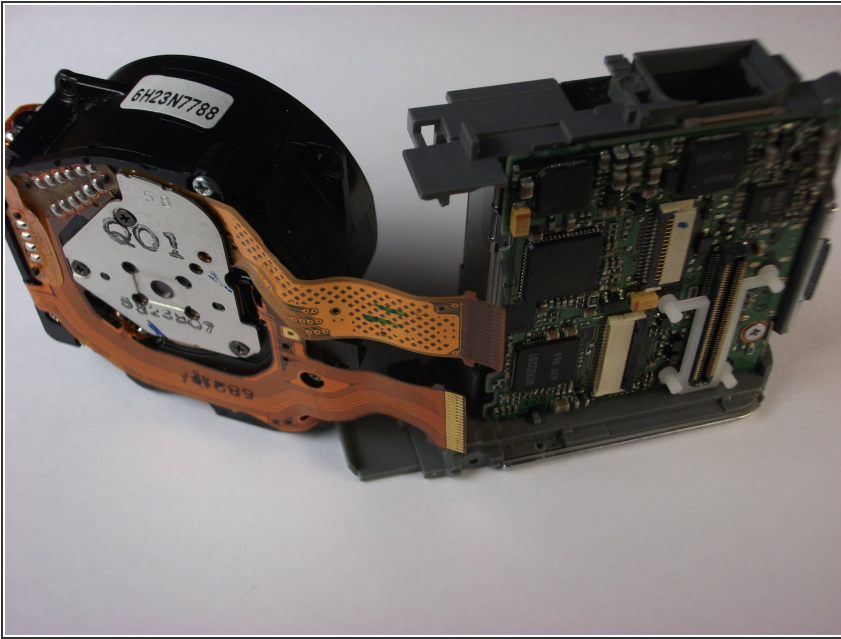
- Lift out the circuit board as shown.

Step 16



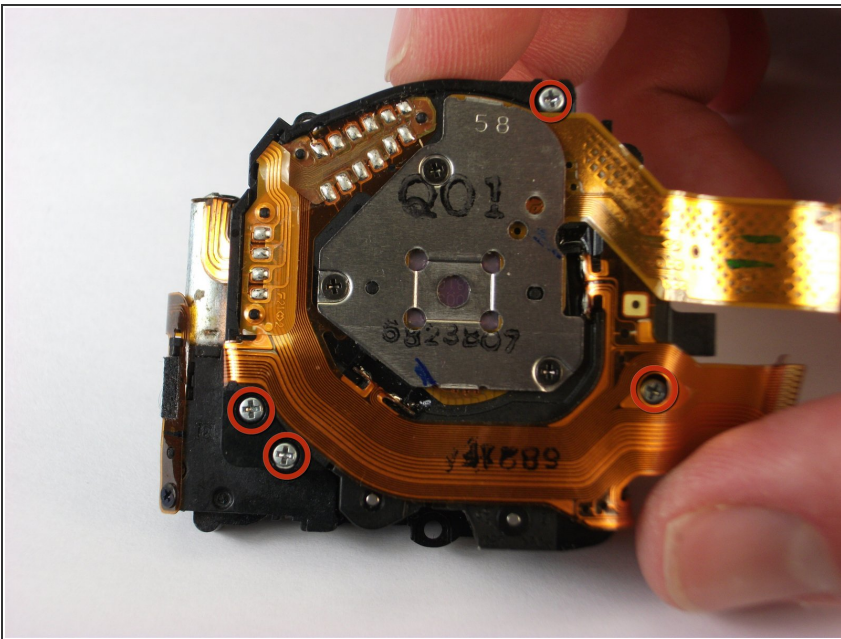
- Lift the two black latches that hold the connector ribbons in place.
- Disconnect the two ribbons.

Step 17



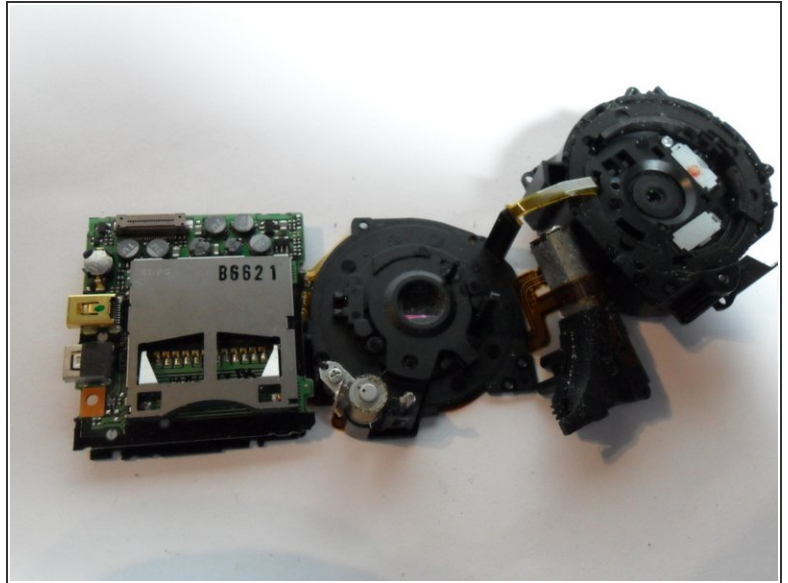
- Remove the lens assembly as shown.

Step 18 — Camera Lens



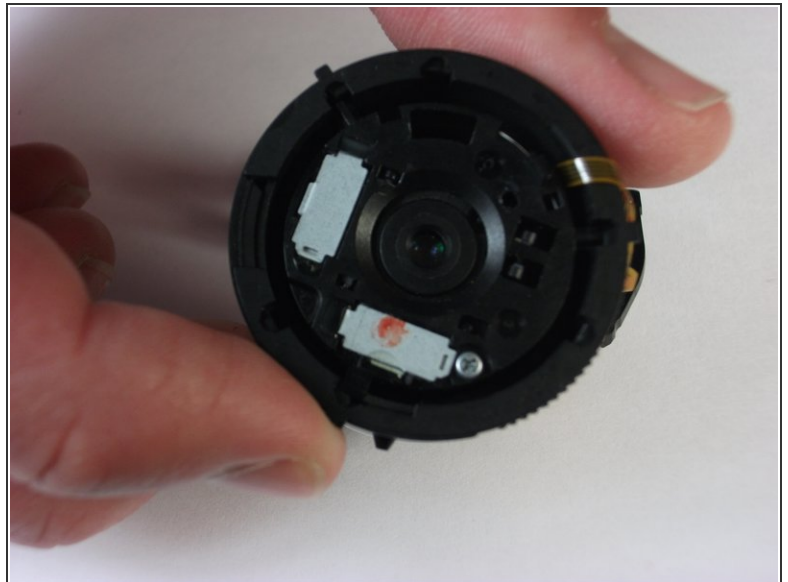
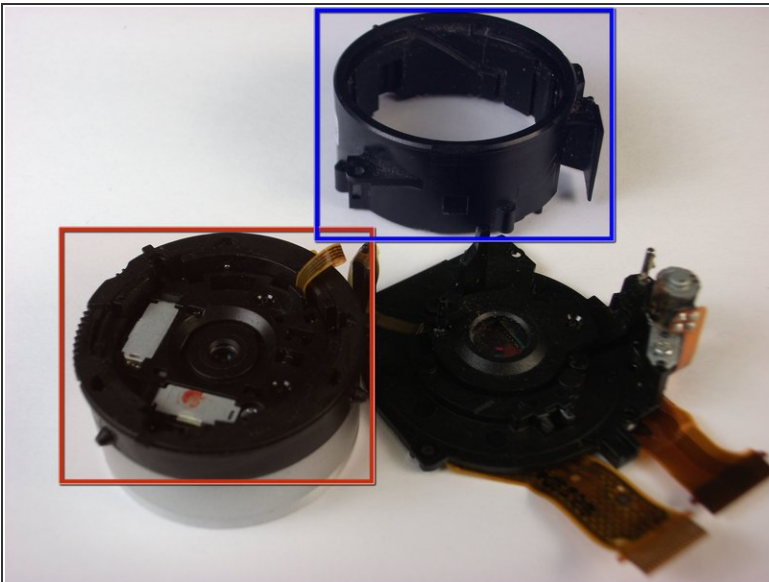
- Remove four 4mm screws from the lens assembly.

Step 19



- Carefully turn over the assembly.

Step 20



- Remove the Fixed Frame Unit by separating it from the assembly.
- Remove the Direct Frame Unit from the assembly.

Step 21



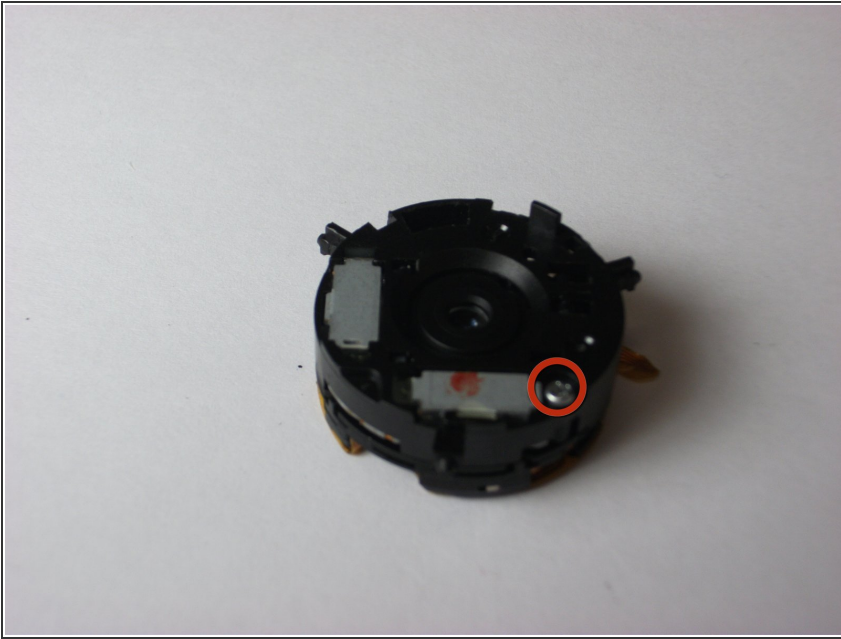
- Remove the 1st lens frame from the lens assembly.

Step 22



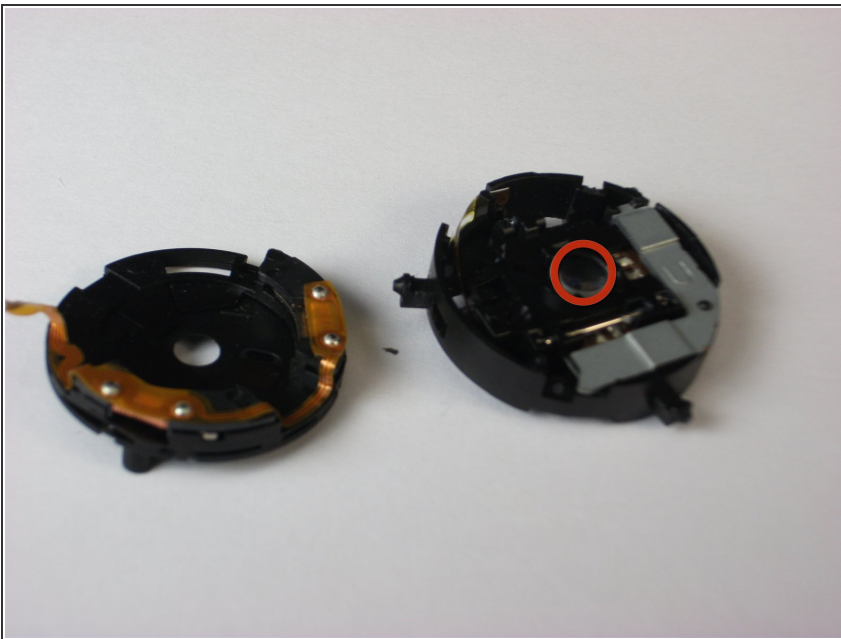
- Detach the 2nd Frame Unit from the assembly.

Step 23



- Remove the 4mm screw from the lens housing.

Step 24



- Separate the lens housing.
- Replace the lens by gently prying away from the assembly.

To reassemble your device, follow these instructions in reverse order.