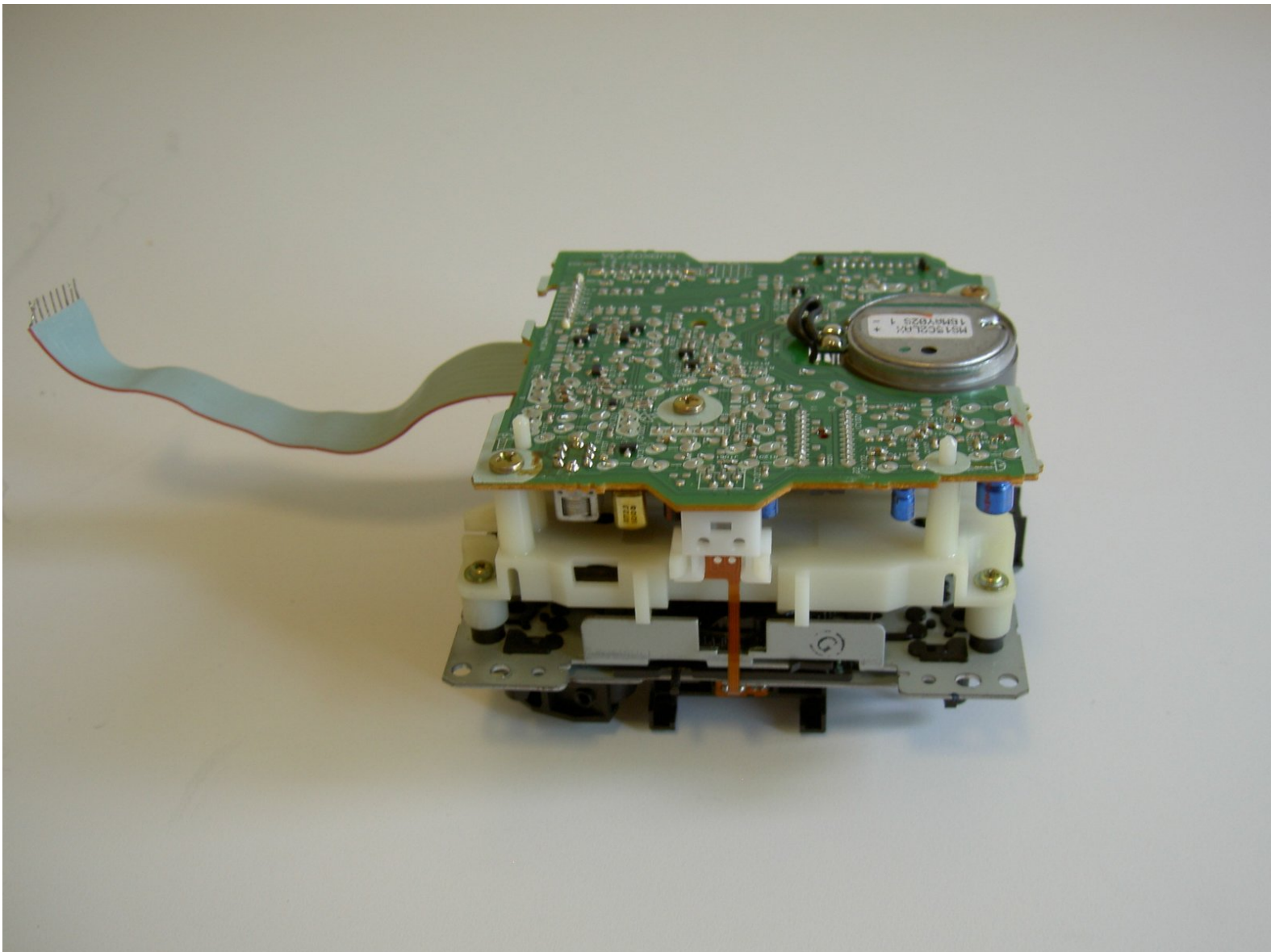




the Panasonic SA-PM17 Tape Player Unit Replacement

When the tape player stops working, probably the easiest way to fix it is to simply replace the whole unit.

Written By: NathanB



INTRODUCTION

This repair guide will show you how to replace the Tape Player Unit by tearing down the device to the point where you can take the unit out and put a new one in.

TOOLS:

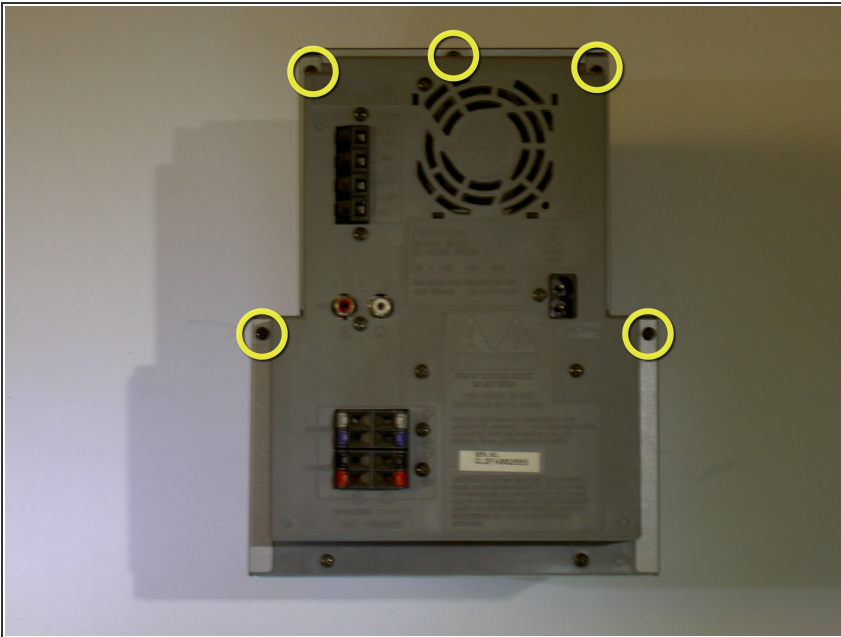
- [Tweezers](#) (1)
 - [Phillips #0 Screwdriver](#) (1)
-

Step 1 — Tape Player Unit



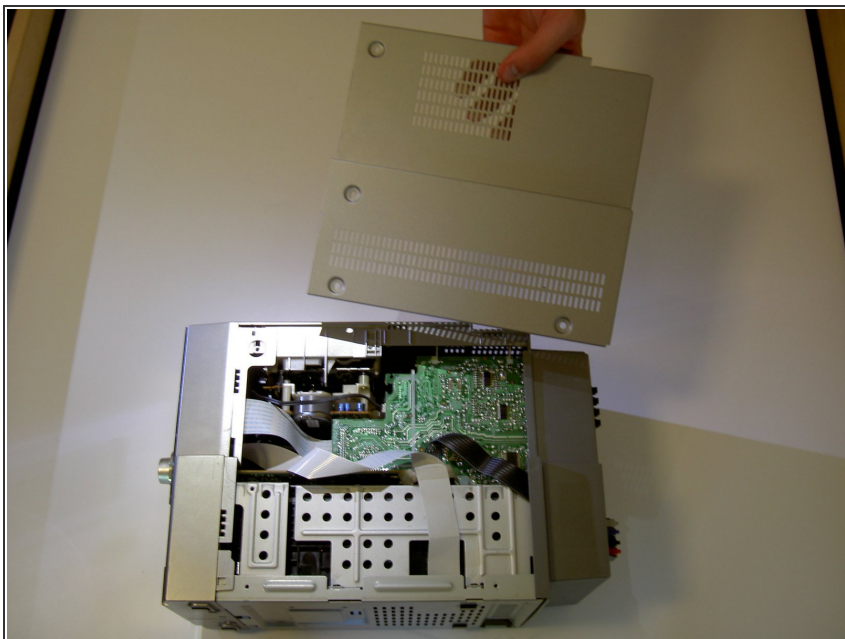
- Using a philips screwdriver, remove these eight 9.5 mm screws on the left and right sides of the device and place aside.

Step 2



- Remove these five 11.5 mm screws and place aside.

Step 3



- Lift the right side off of the device and place aside. Repeat for left side.

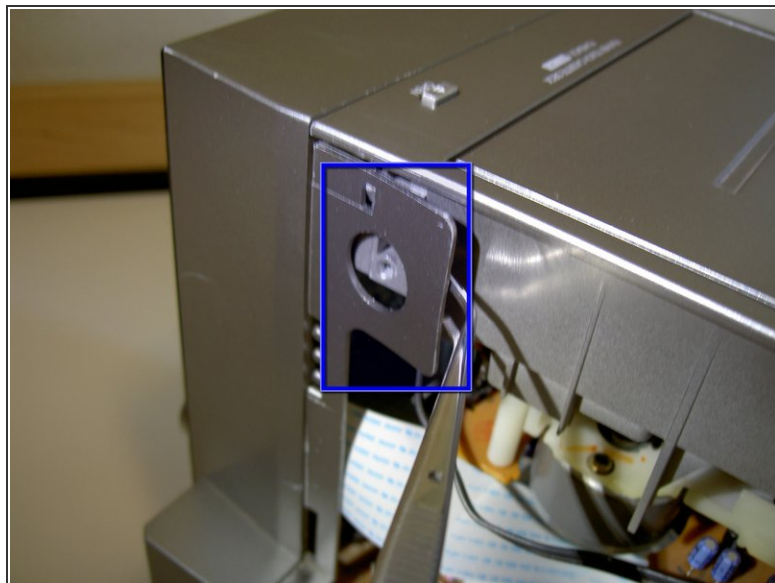
Step 4



- Lift the top of the device gently but firmly from the back part until fully detached.
- Allow the top to rest on the back without reattaching it.

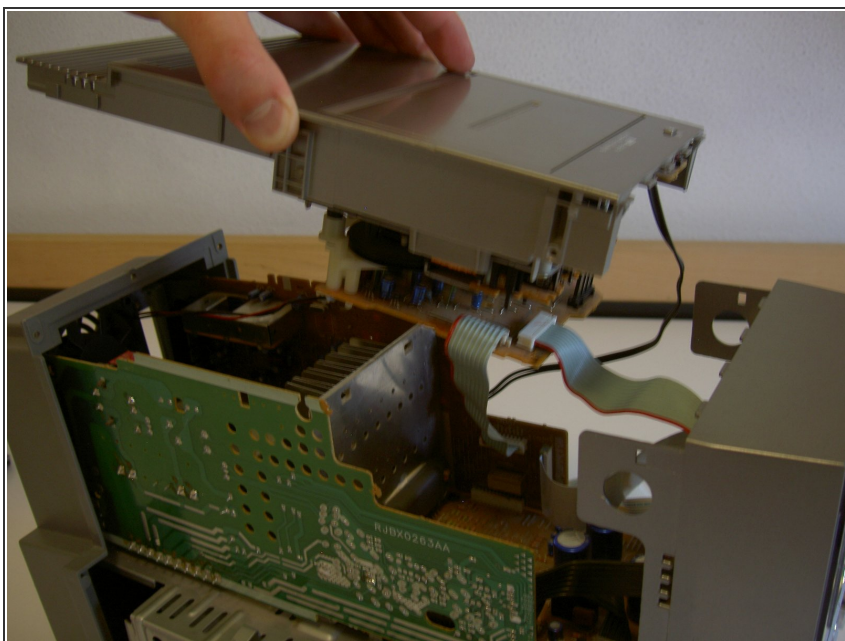
⚠ CAUTION: Do not lift the top too far as there are wires attached to it.

Step 5



- Lift up on the tabs indicated to disengage them from the hooks holding them in place.

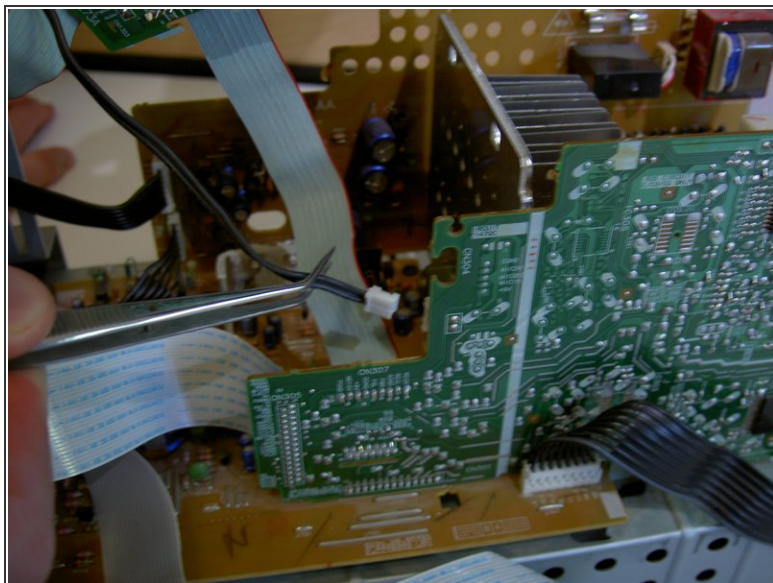
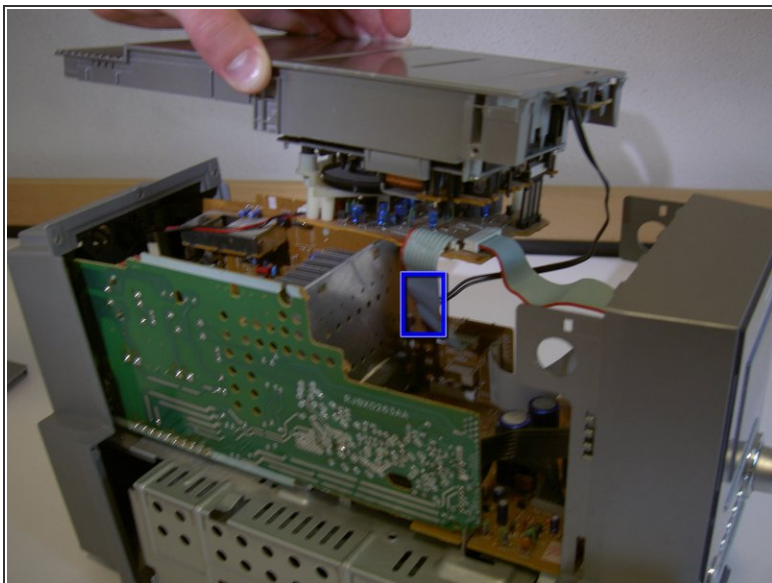
Step 6



- Lift the top up while firmly sliding it towards the back of the device.

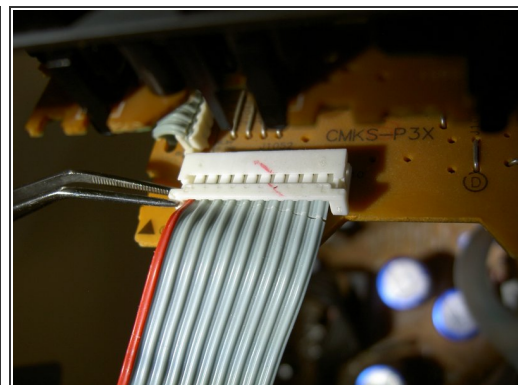
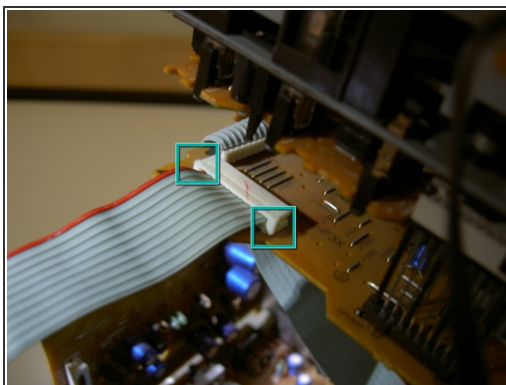
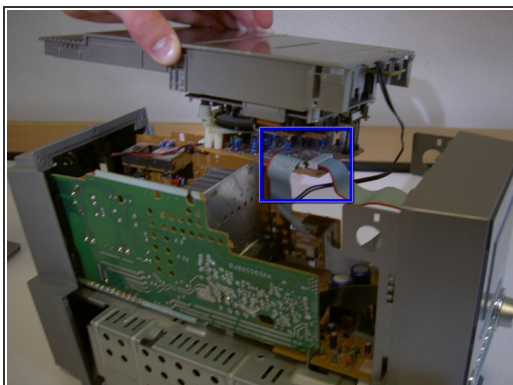
⚠ CAUTION: Do not lift the top too high as there are cords that need to be detached before the top can be removed.

Step 7



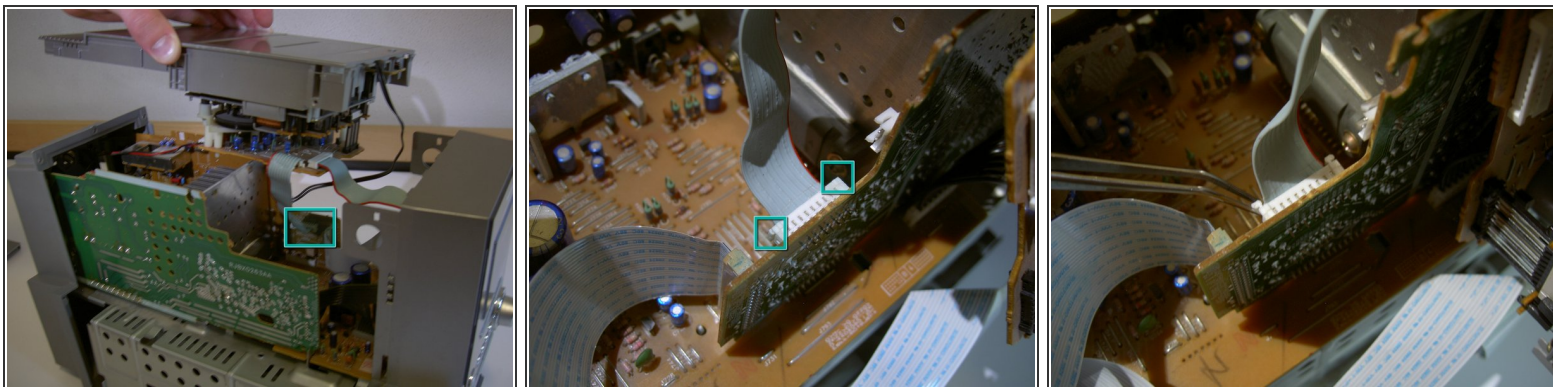
- The second picture shows a close up of the region indicated in the first picture.
- Remove the small black wire indicated. Grip the wire near its base and pull gently but firmly until it pops out of the slot.

Step 8



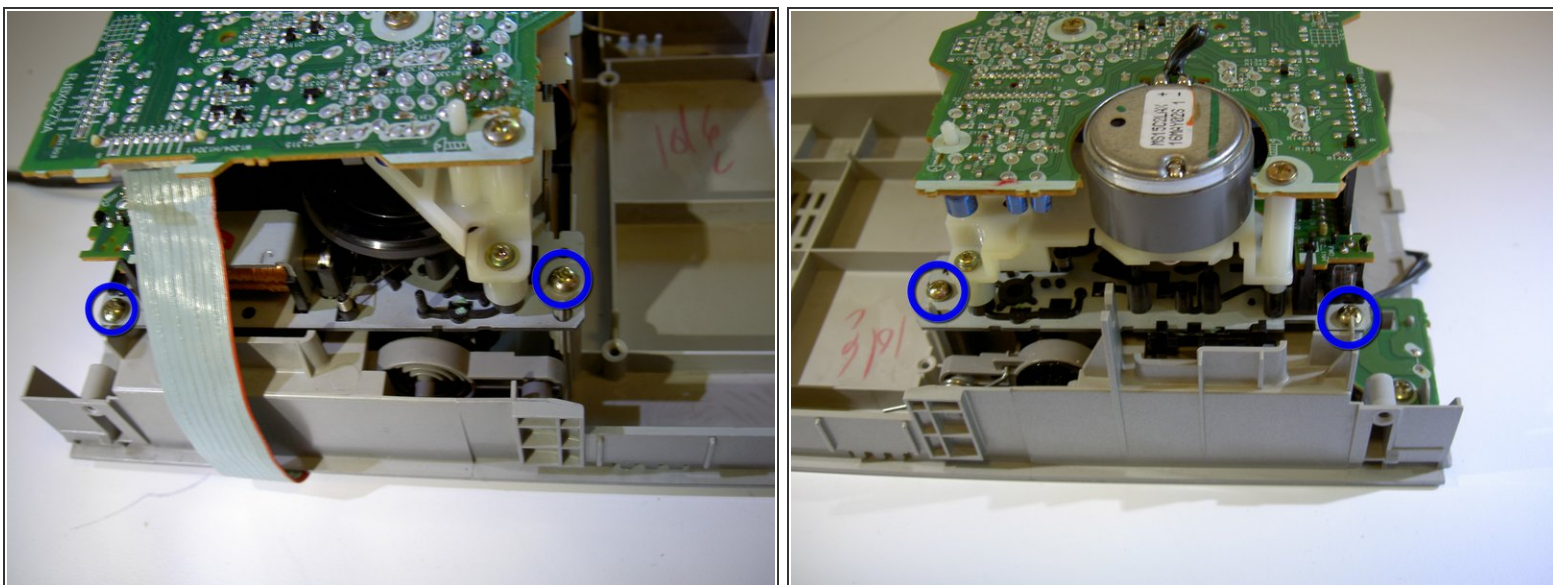
- This step deals with the indicated area of the device.
- Using fingers or tweezers, lift the indicated tabs out until the cord's restraint looks like the final picture.
- Gently pull on the cord near it's base until it comes free of the restraint.

Step 9



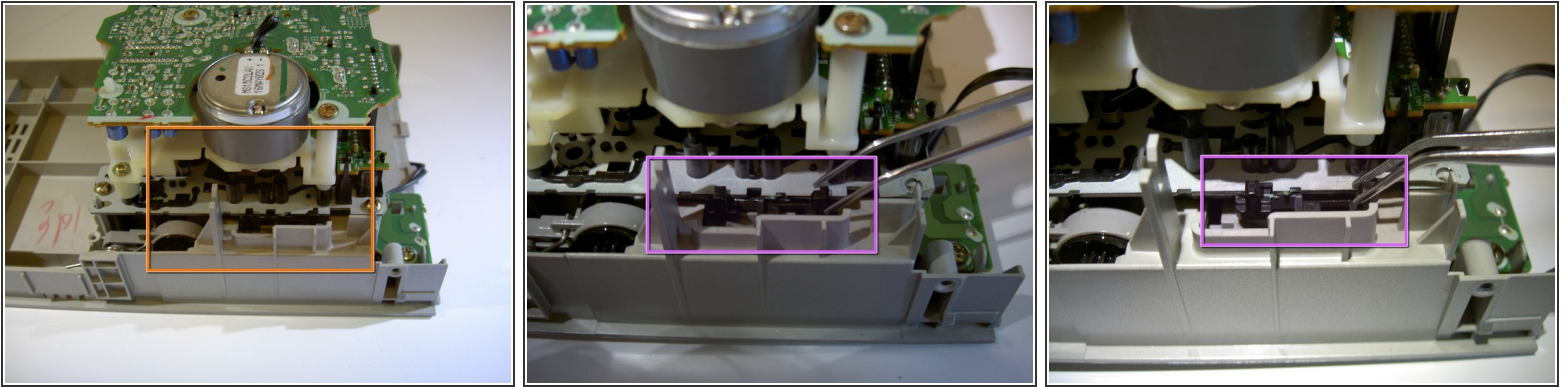
- This step deals with the indicated area of the device.
- Lift the indicated tabs out until the restraint looks like the final picture.
- Gently pull on the cord until it comes free of the attachment.
- The top section of the device should now be free of the body.

Step 10



- Remove the four indicated 12.1 mm screws and place aside.

Step 11



- This step deals with the indicated area.
- Using fingers or tweezers, pull the indicated latch to the right to disconnect the tape player unit from the top of the device.
- While holding the latch to the right, lift the unit up from the plastic.

⚠ CAUTION: When the latch is disengaged, the tape cover may push out and force the rest of the apparatus to pop up. This is normal, but be careful that the tape cover does not pop out too quickly.

i NOTE: When placing this unit back on the device, you don't need to follow this step, you can simply push the unit into position and the latch will automatically snap into position.

To reassemble your device, follow these instructions in reverse order.