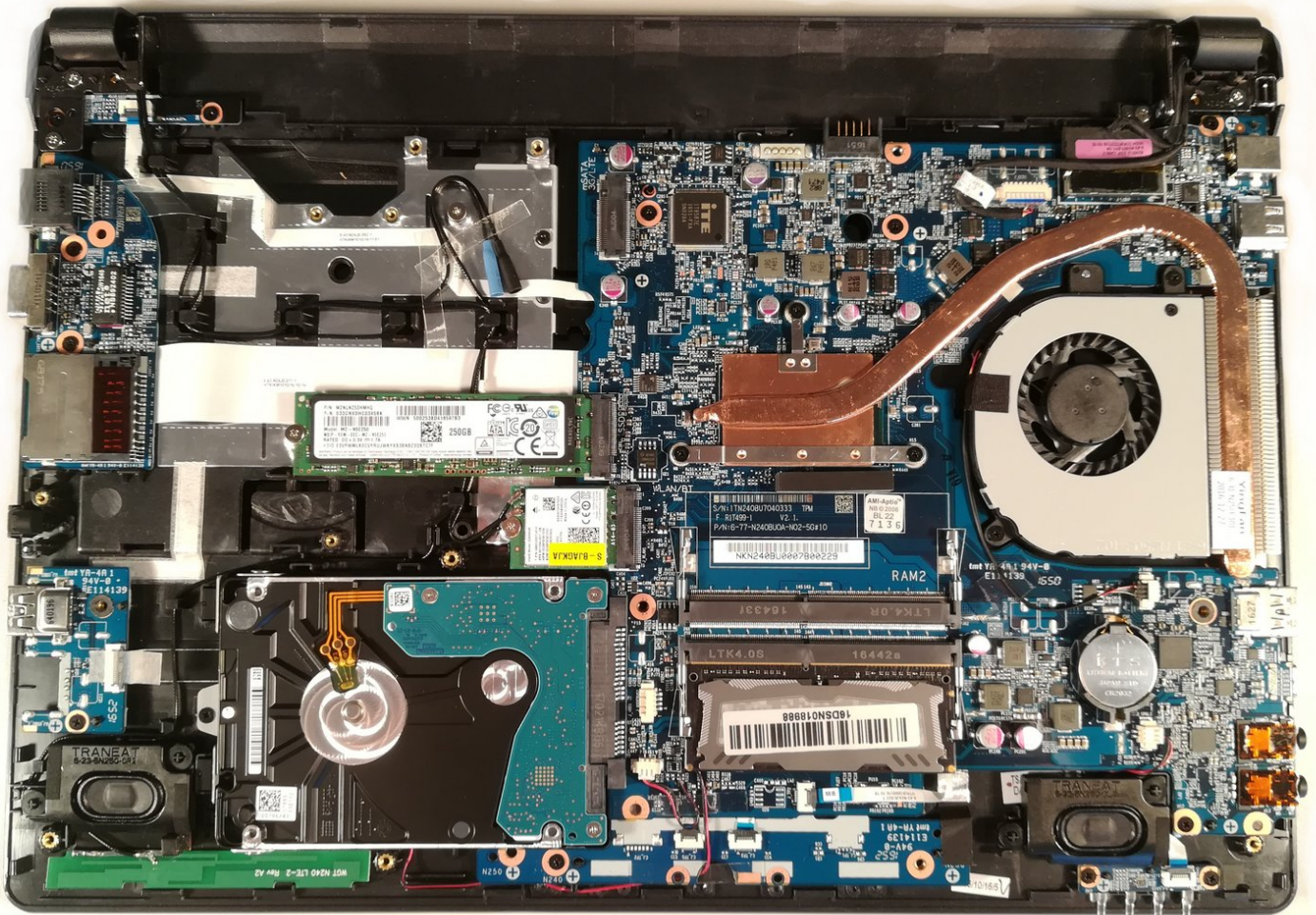




# why! N240BU Access to major components

Written By: Felice Suglia

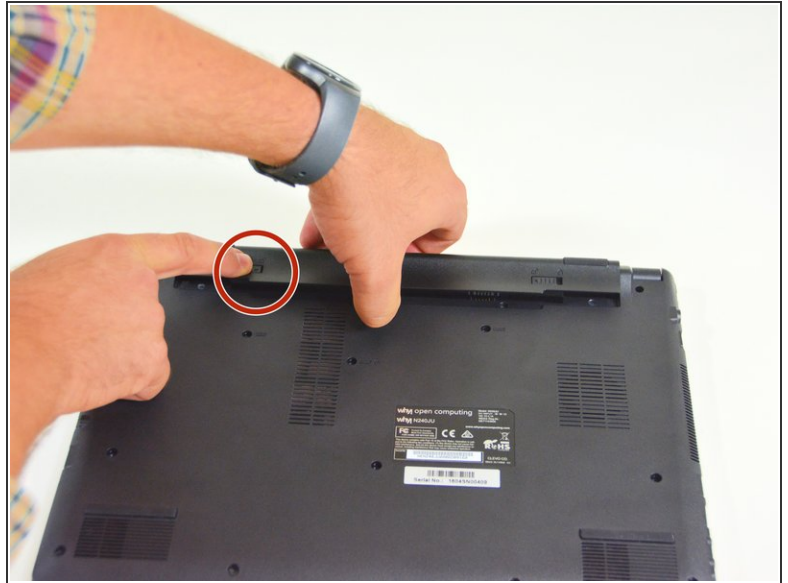




## TOOLS:

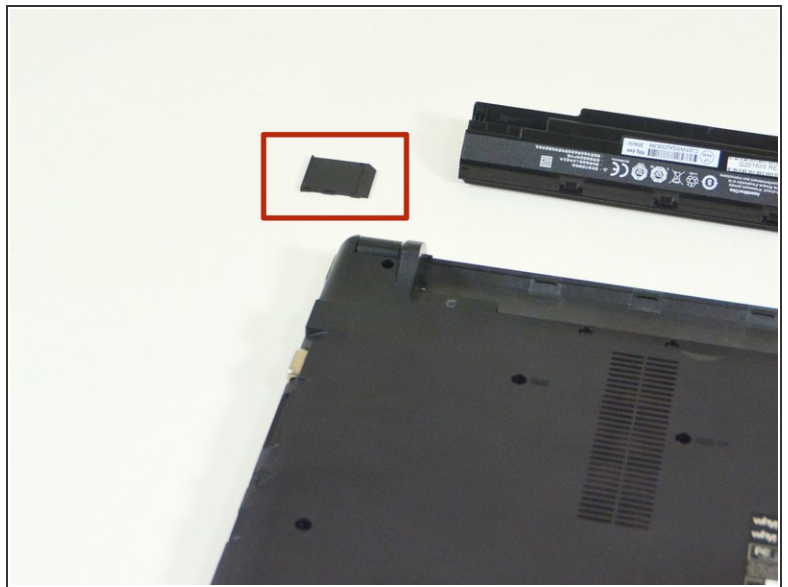
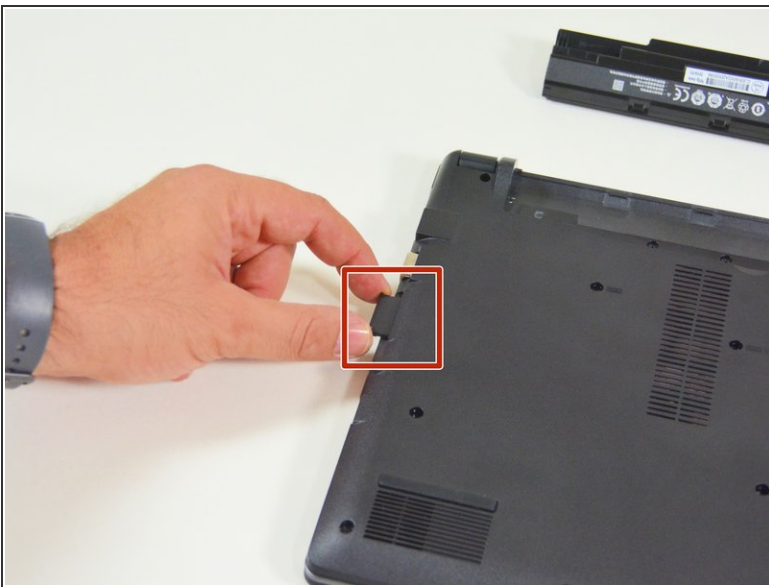
- [Phillips #0 Screwdriver](#) (1)
-

## Step 1 — Battery



- Start by unlocking the right locking latch.
- Then, by simultaneously unlocking the left latch, lift the battery out of its socket.

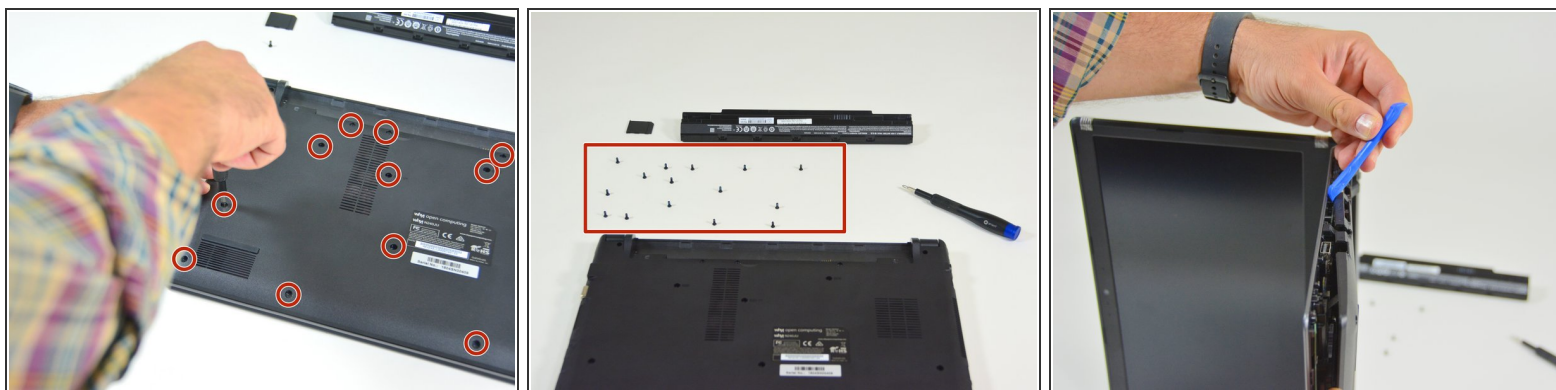
## Step 2 — Access to main components



- Begin by spotting the dummy memory card.
- Then, remove it and put it on your workplan.



## Step 3



- Locate the 15 screws that hold the bottom cover of the device in place.
- Unscrew them and place them on your work surface.
- Then, un-clip the bottom cover, starting with the side shown in the third picture.

To reassemble your device, follow the instructions in reverse order.