



why! N240BU Battery Replacement BIOS

Written By: Felice Suglia





TOOLS:

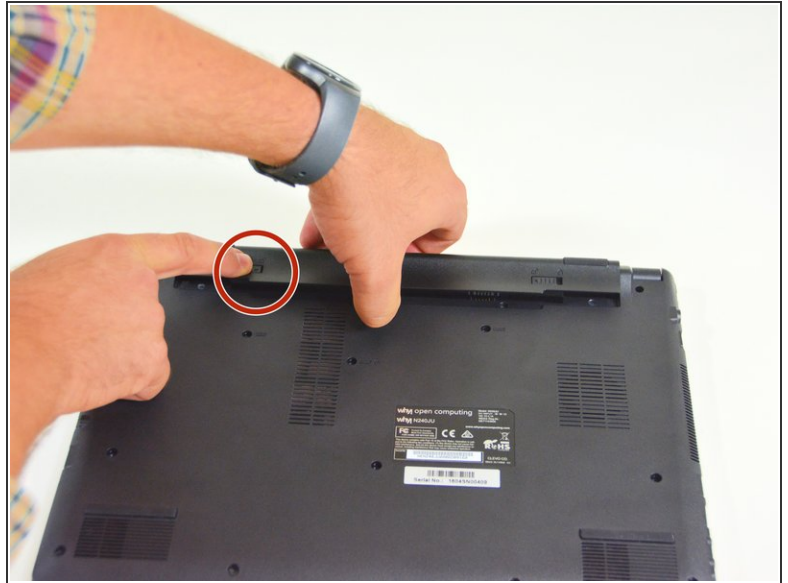
- [Phillips #0 Screwdriver](#) (1)



PARTS:

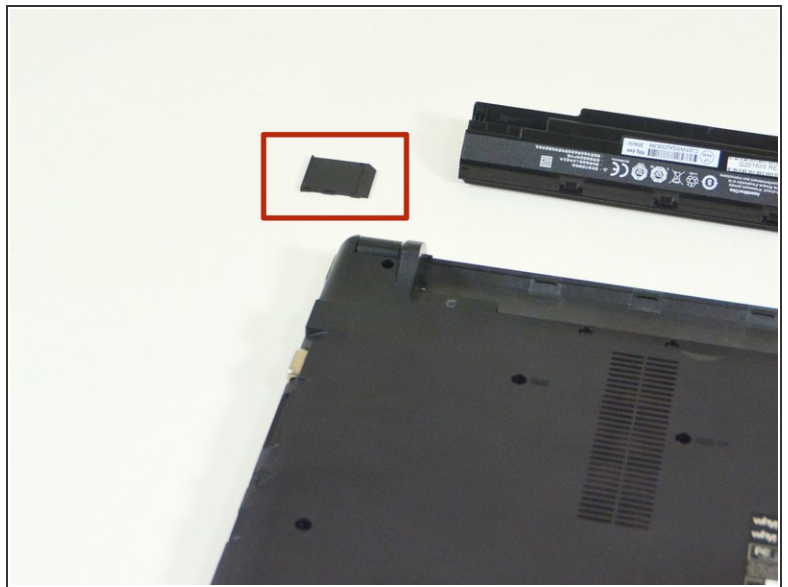
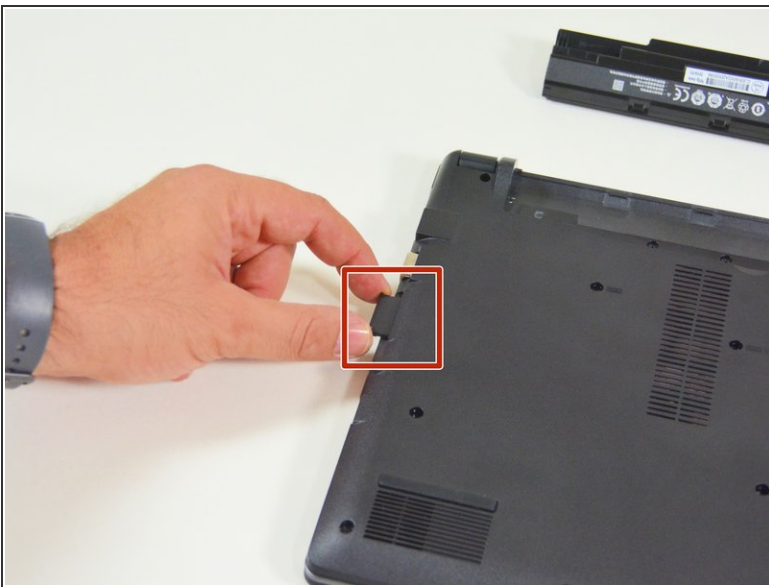
- [New Item](#) (1)
- [New Item](#) (1)
- [New Item](#) (1)
- [New Item](#) (1)
- [New Item](#) (1)
- [New Item](#) (1)

Step 1 — Battery



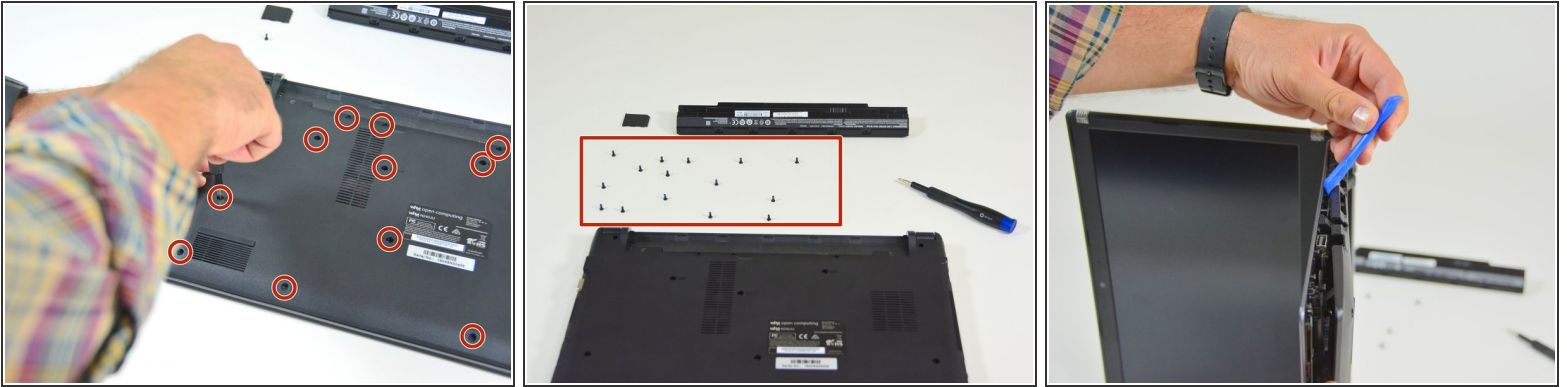
- Start by unlocking the right locking latch.
- Then, by simultaneously unlocking the left latch, lift the battery out of its socket.

Step 2 — Access to main components



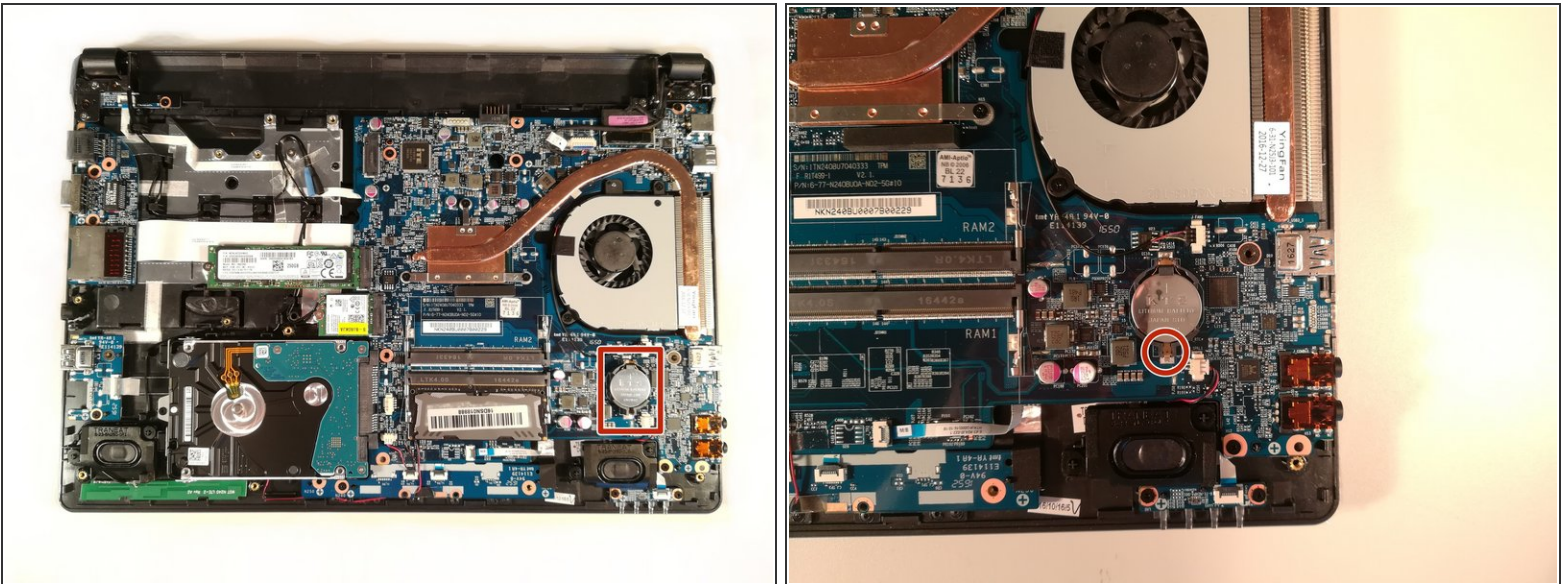
- Begin by spotting the dummy memory card.
- Then, remove it and put it on your workplan.

Step 3



- Locate the 15 screws that hold the bottom cover of the device in place.
- Unscrew them and place them on your work surface.
- Then, un-clip the bottom cover, starting with the side shown in the third picture.

Step 4 — BIOS stack



- Press with a screwdriver in the red circled area to spread the base of the battery
- Remove the battery by holding the screwdriver

To reassemble your device follow the following instructions in reverse order

This document was generated on 2019-11-05 09:29:54 PM (MST).

