



why! N240BU Replacing the LCD screen

Written By: Felice Suglia



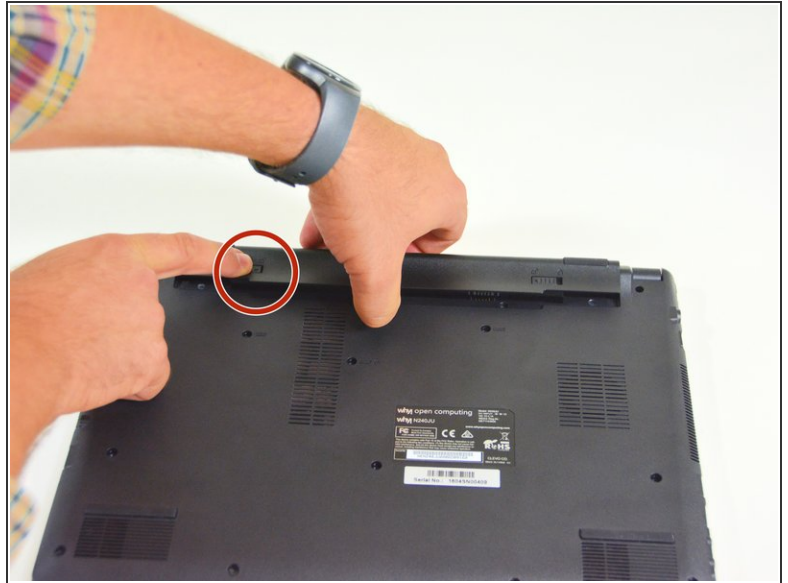
**TOOLS:**

- [Phillips #0 Screwdriver](#) (1)

**PARTS:**

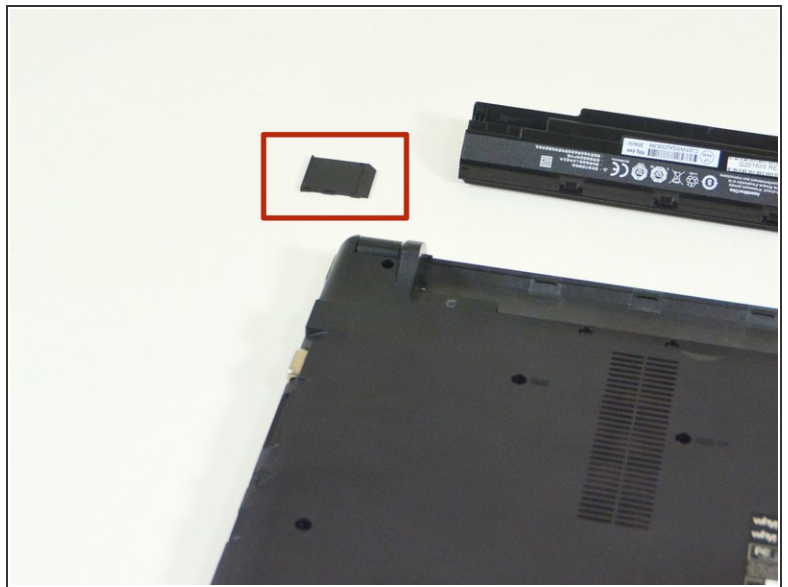
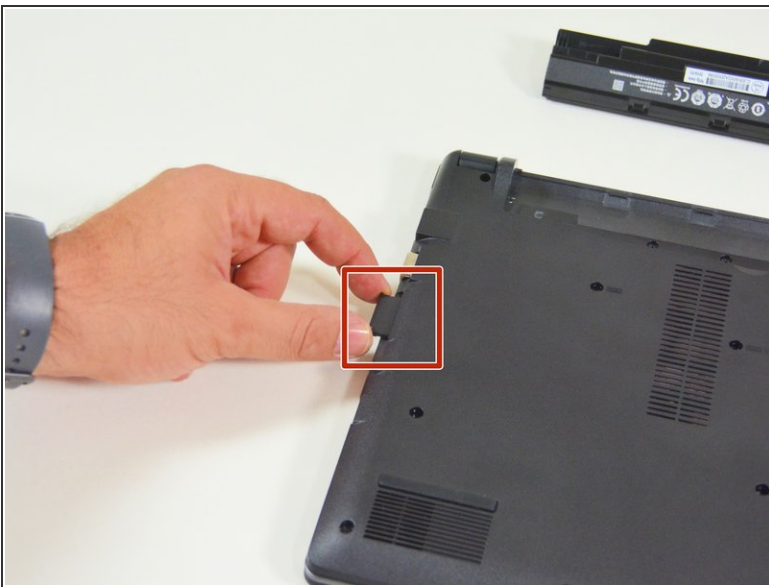
- [New Item](#) (1)
- [New Item](#) (1)
- [New Item](#) (1)
- [New Item](#) (1)
- [New Item](#) (1)
- [New Item](#) (1)

Step 1 — Battery



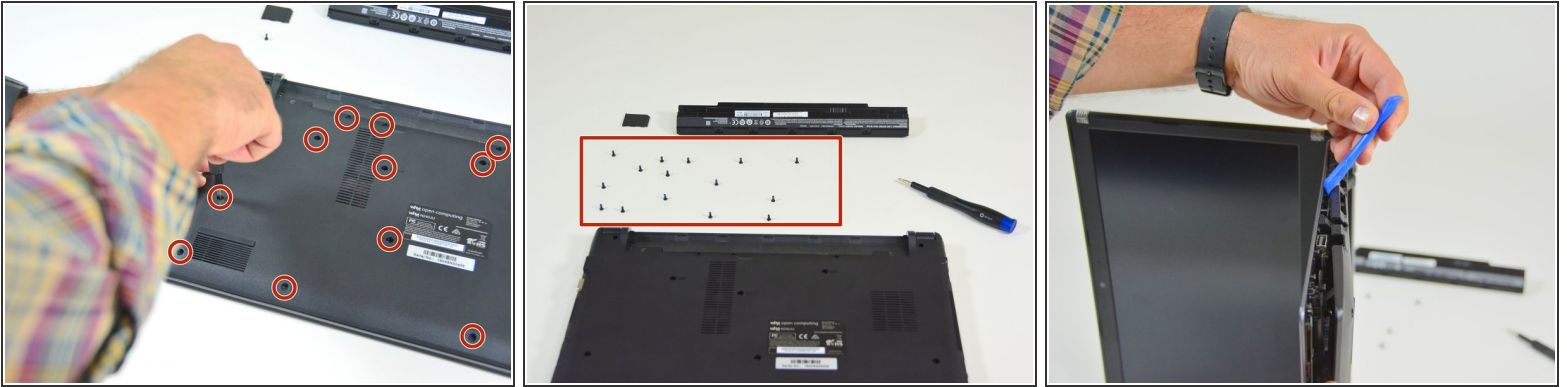
- Start by unlocking the right locking latch.
- Then, by simultaneously unlocking the left latch, lift the battery out of its socket.

Step 2 — Access to main components



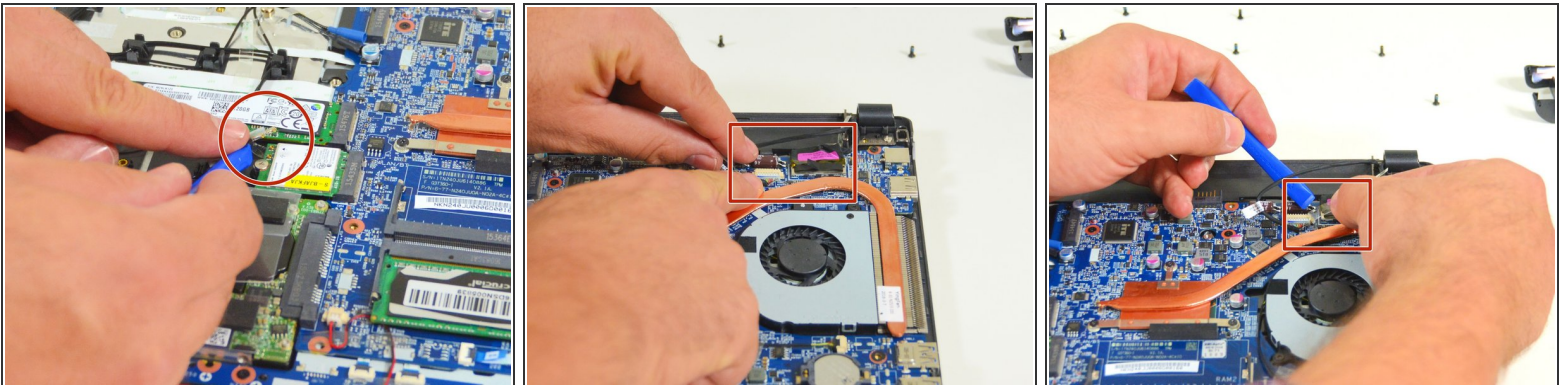
- Begin by spotting the dummy memory card.
- Then, remove it and put it on your workplan.

Step 3



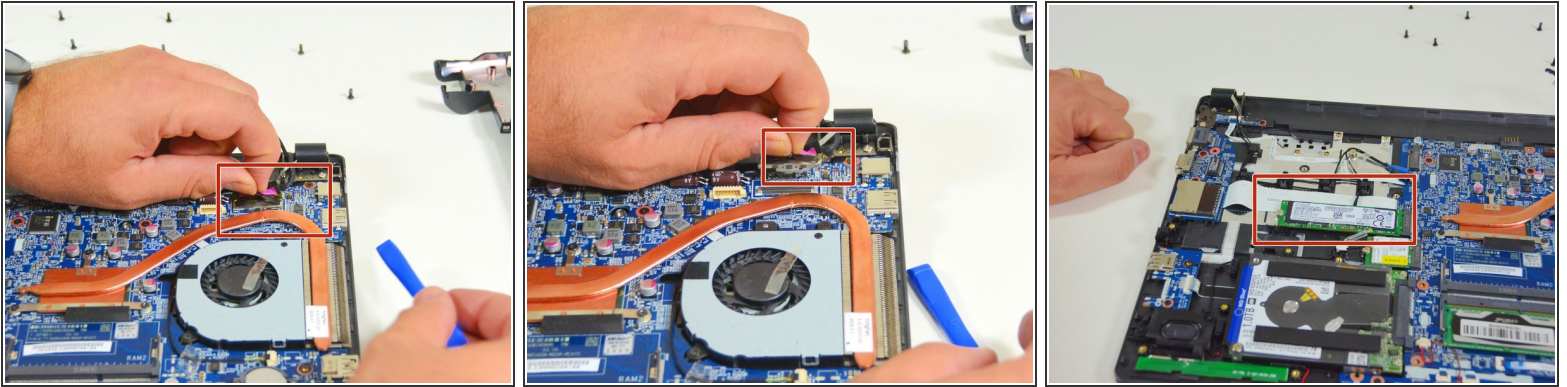
- Locate the 15 screws that hold the bottom cover of the device in place.
- Unscrew them and place them on your work surface.
- Then, un-clip the bottom cover, starting with the side shown in the third picture.

Step 4 — LCD screen



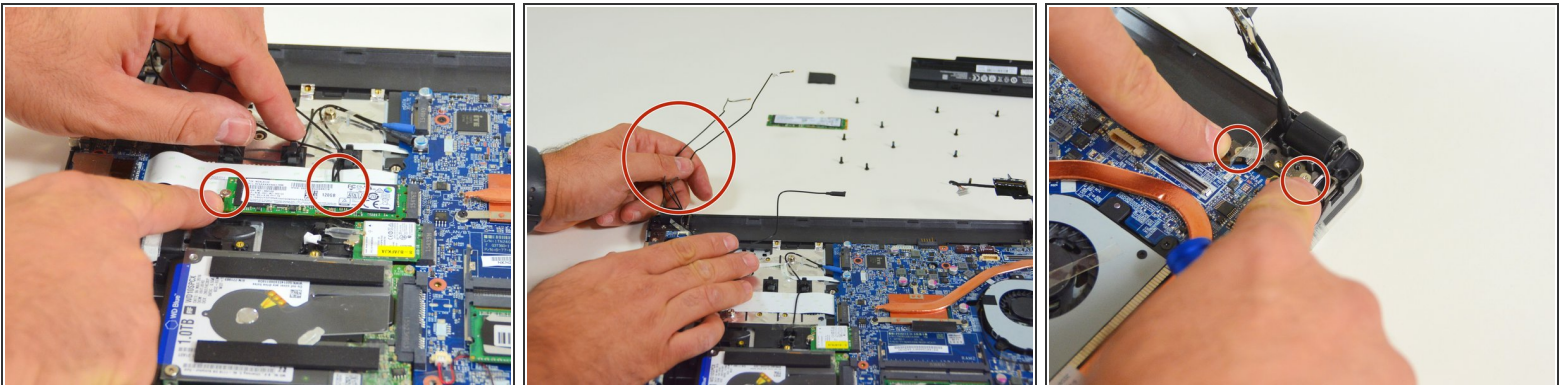
- In order to remove the LCD screen, you must remove the connection cables from the Wi-Fi chipset.
- Then locate the two connectors on the LCD screen.
- Disconnect the first connector.

Step 5



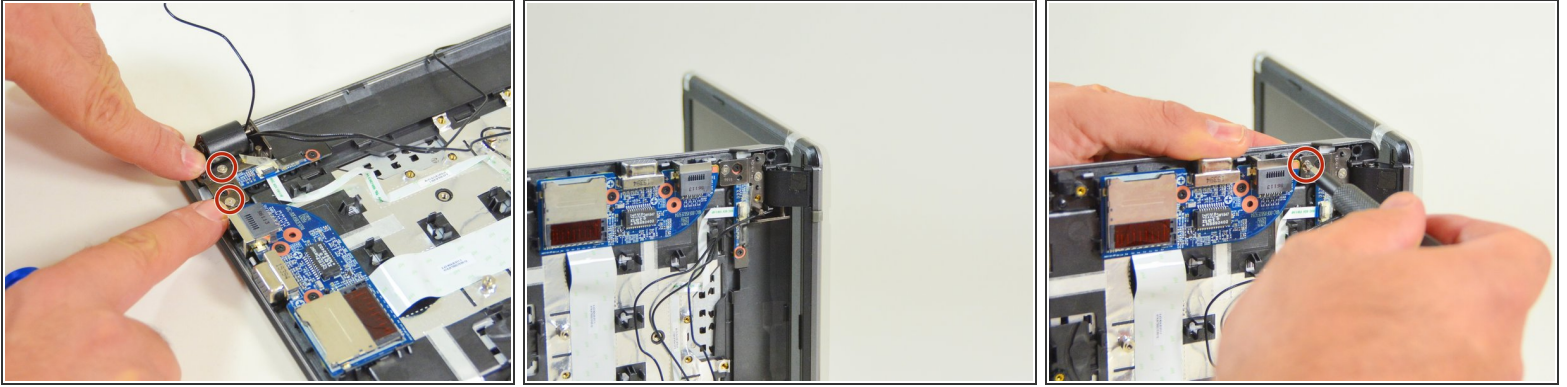
- Peel off the tape from the second connector.
- Then disconnect the second connector.
- Locate the SSD M.2 drive.

Step 6



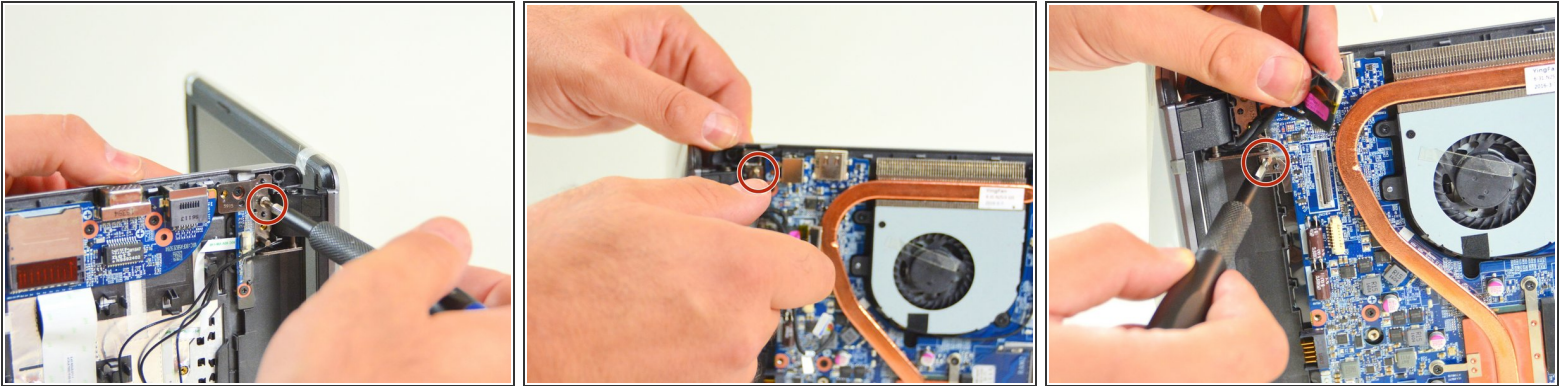
- Then dismount this disk because it must release the connection cables of the Wi-Fi chipset.
- Free Wi-Fi connection cables now
- Now locate the two screws that secure the screen to the rest of the Laptop (fan side)

Step 7



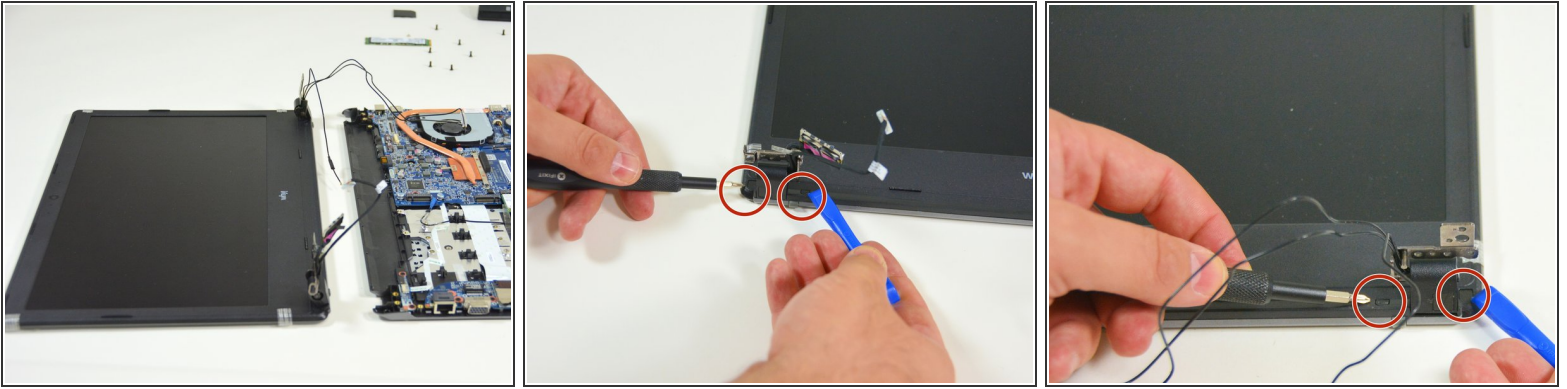
- Now locate the two screws that secure the screen to the rest of the Laptop (the other side).
- Then lift the Laptop as shown in the second image of this step.
- Unscrew the first screw.

Step 8



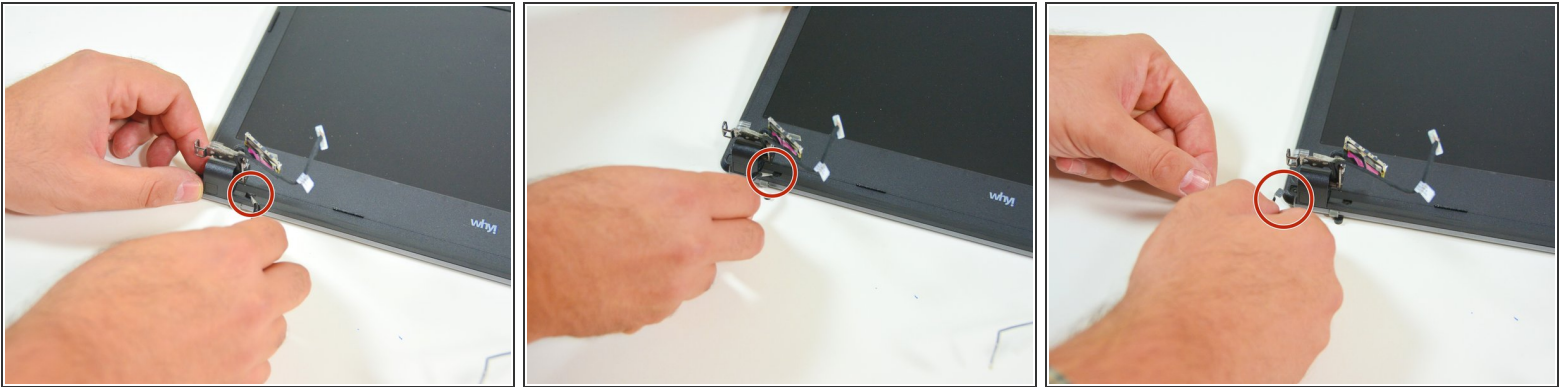
- Then unscrew the second screw.
- Rest the Laptop as shown in the second image of this step and unscrew the third screw.
- Then the fourth screw.

Step 9



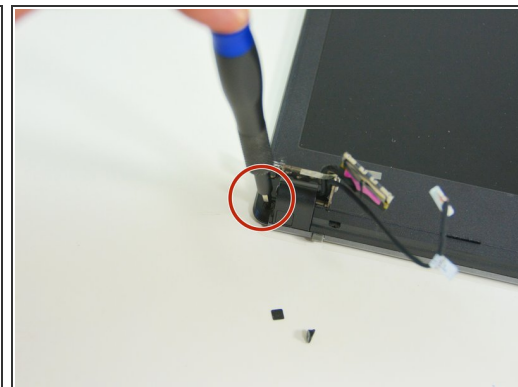
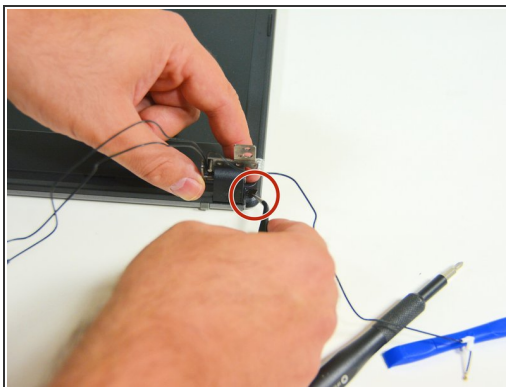
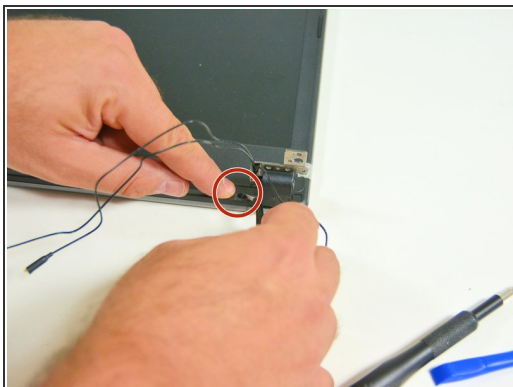
- With the four screws unscrewed, separate the screen from the rest of the Laptop. Note that the hinge remains attached to the screen.
- On the screen near the hinge now locate the two caches screws on the left.
- Then look for those on the right.

Step 10



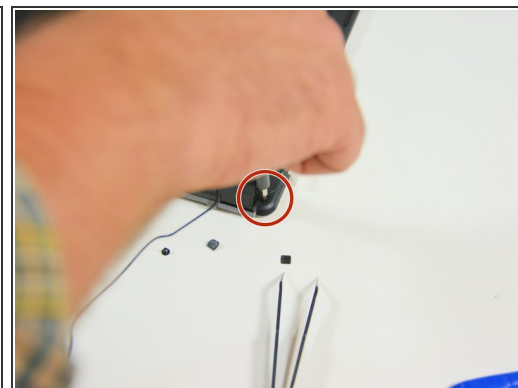
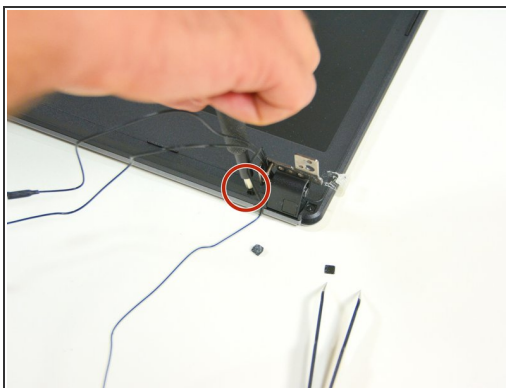
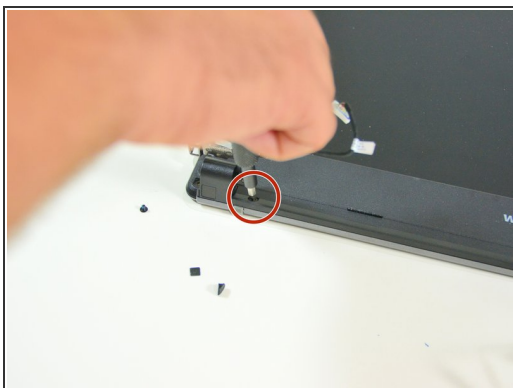
- Now remove the screw covers near the left hinge.
- first on the right side of the hinge.
- then on the left side.

Step 11



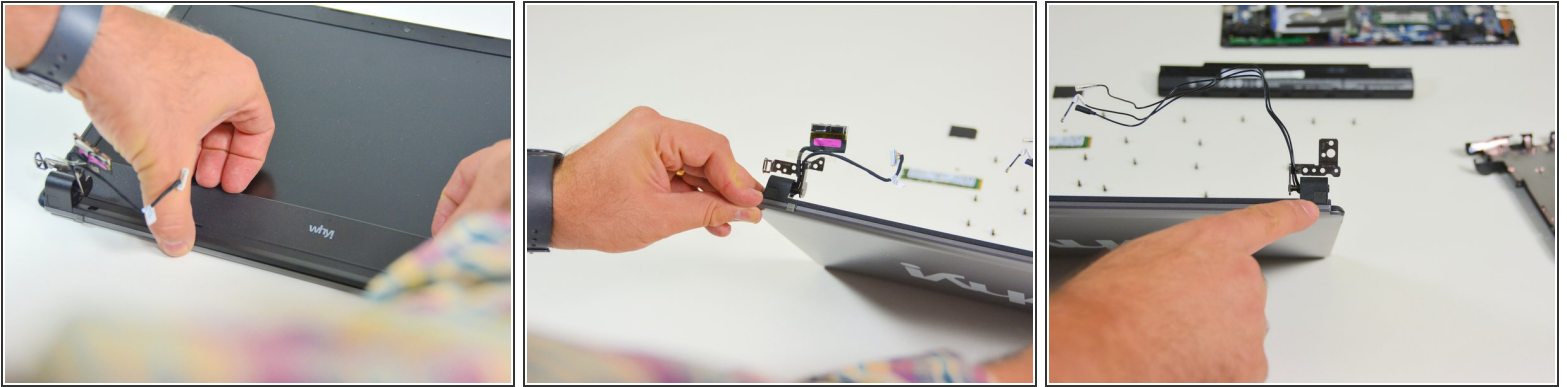
- Repeat near the right hinge
- .Now return to the hinge on the left side and unscrew the outer screw.

Step 12



- Then unscrew the inner screw.
- Repeat on the side of the right hinge.

Step 13



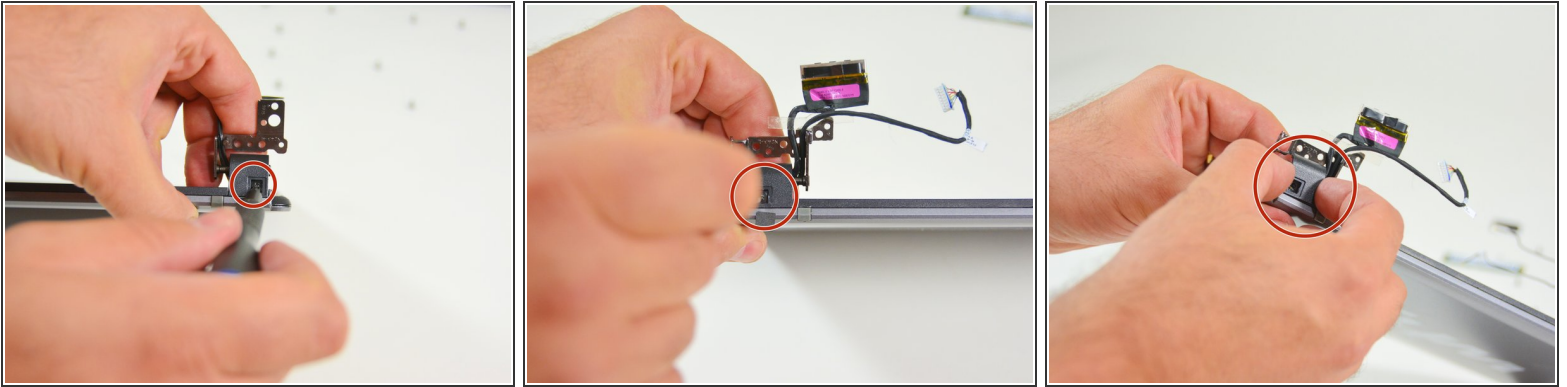
- You can now gently unclip the screen cover.
- Locate the left hinge screw cover.
- Locate the right hinge screw cover.

Step 14



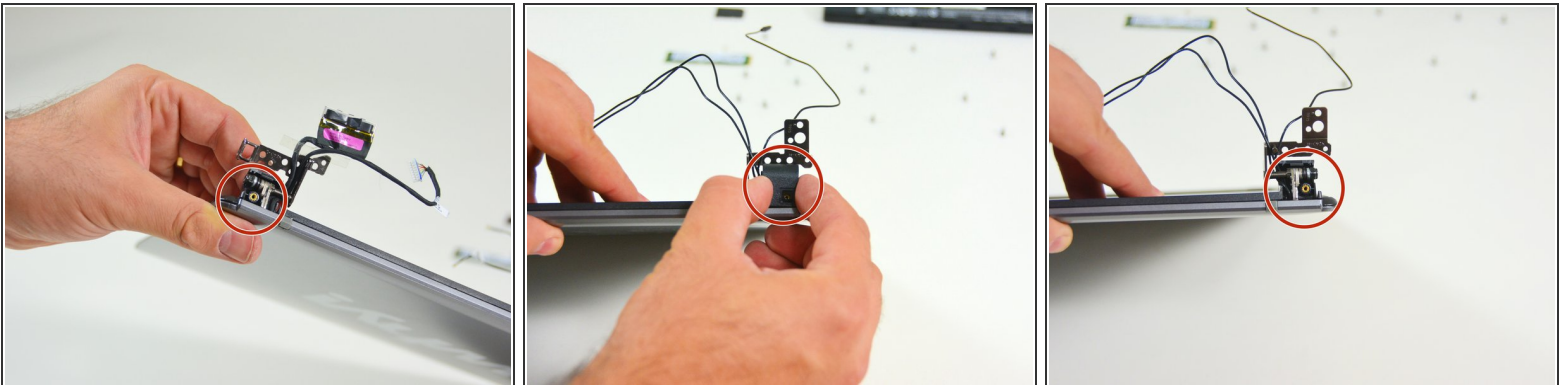
- Gently remove the screw cover on the left hinge.
- Also remove the screw cover on the right hinge.
- Once the screw caps are removed you will see the fixing screws.

Step 15



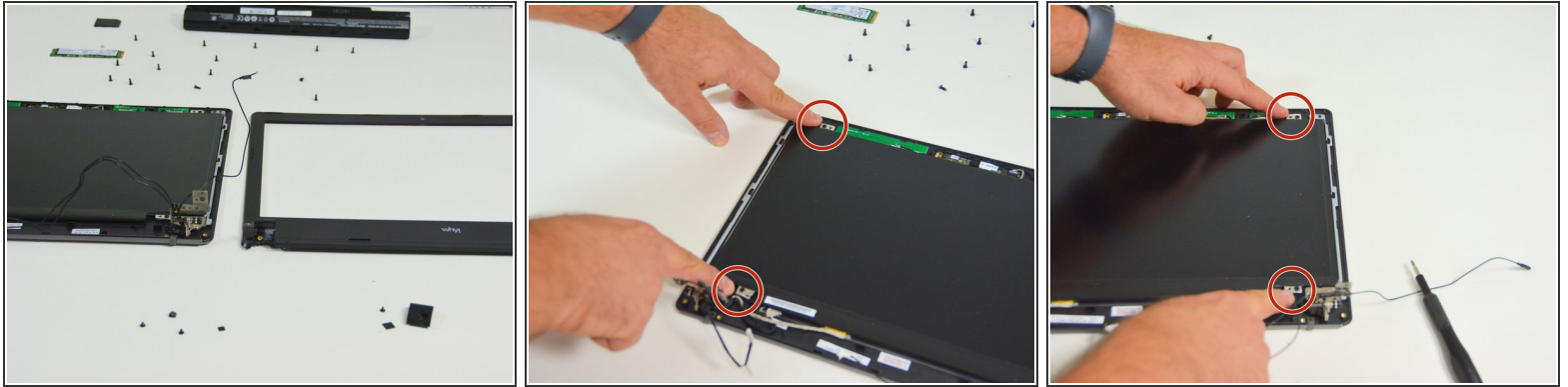
- Now unscrew the screw on the left hinge.
- Then unscrew the screw on the right hinge.
- Once this is done you can now remove the hinge cover (left).

Step 16



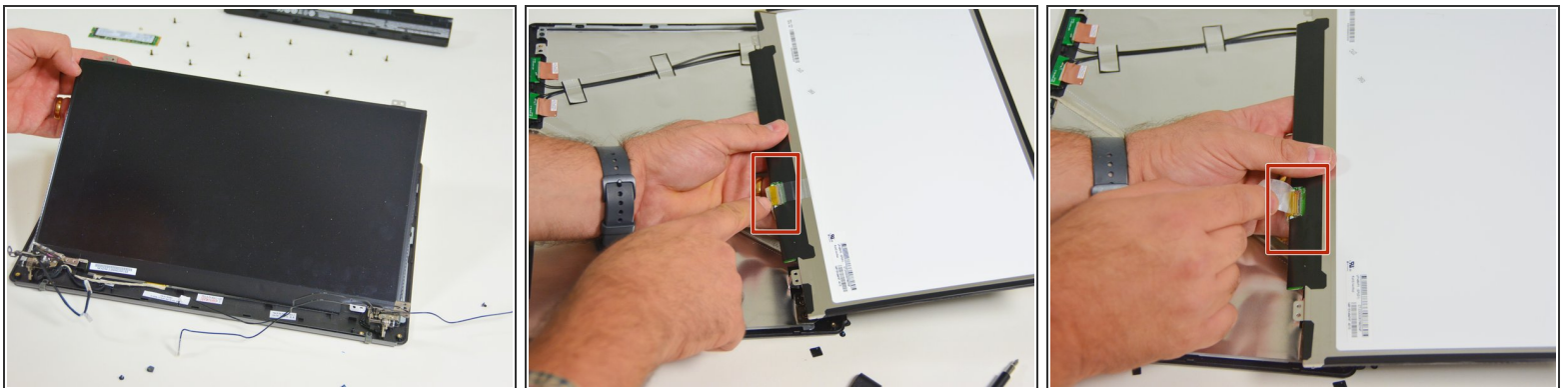
- Left hinged cover removed.
- Then remove the cover from the right hinge.
- Right hinge cover removed.

Step 17



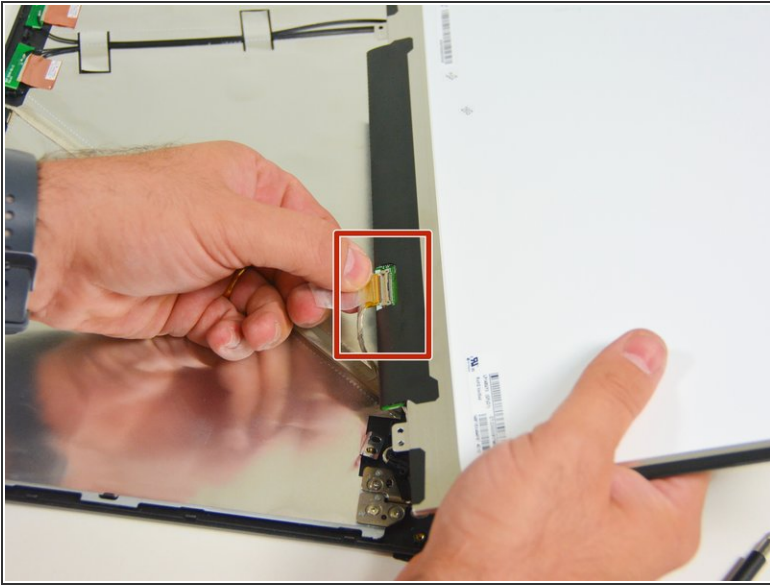
- once these operations are done you see the LCD screen ready to be dismounted.
- Now locate the screws that secure the LCD screen to the bracket and unscrew them. Two on the left.
- Two on the right.

Step 18



- Once the screws are unscrewed, lift the LCD screen gently and flip it over.
- You will then see the connection cable of the screen.
- Locate its connector.

Step 19



- Disconnect the cable.
- And here you can now put it on your work plan.

To reassemble your device, Follow these instructions in reverse order.