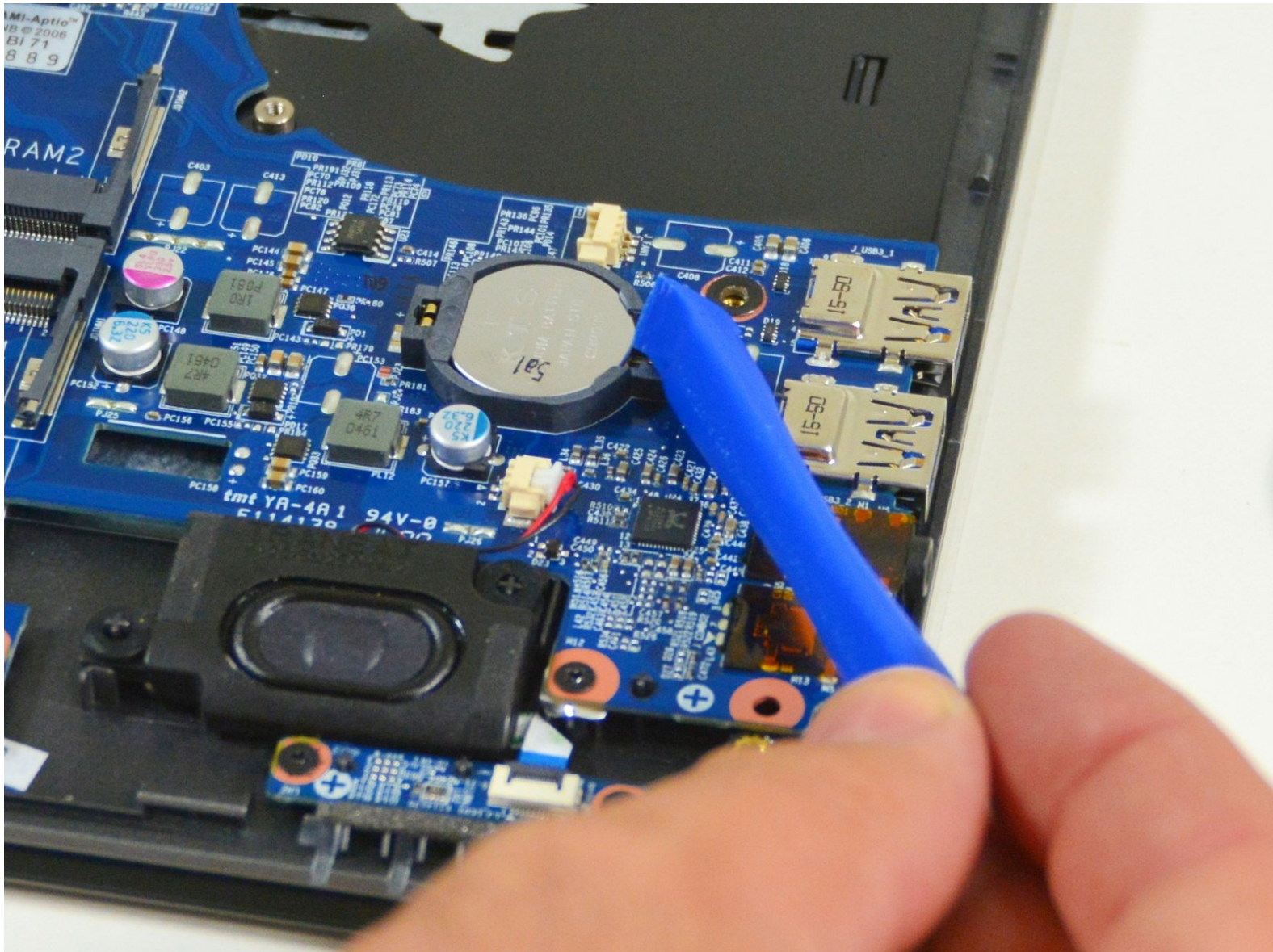




why! N240JU Battery Replacement BIOS

Written By: Felice Suglia





TOOLS:

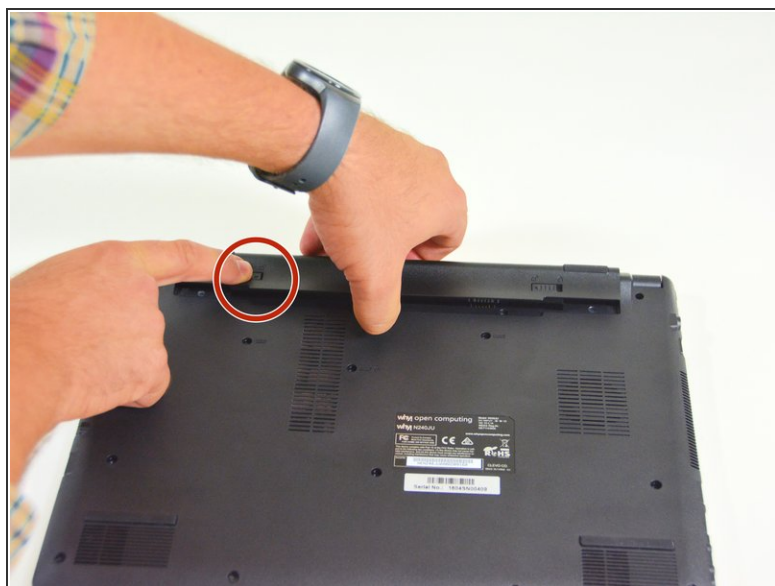
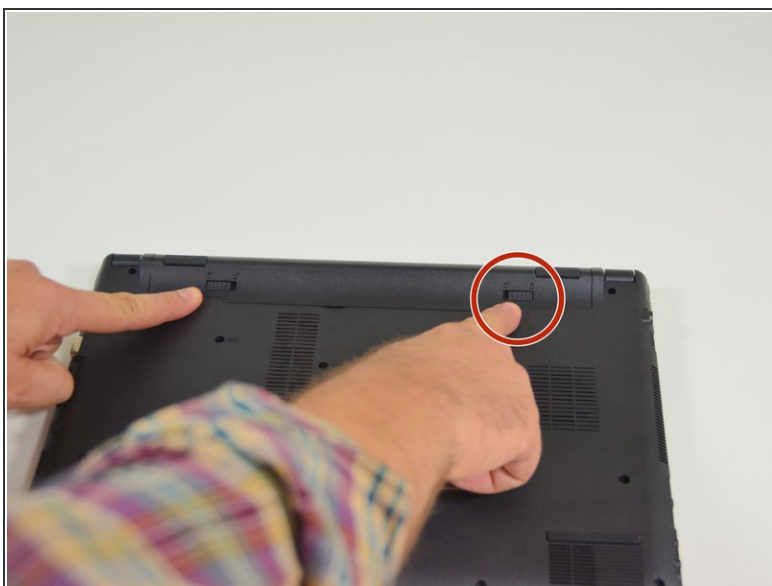
- [Phillips #0 Screwdriver](#) (1)



PARTS:

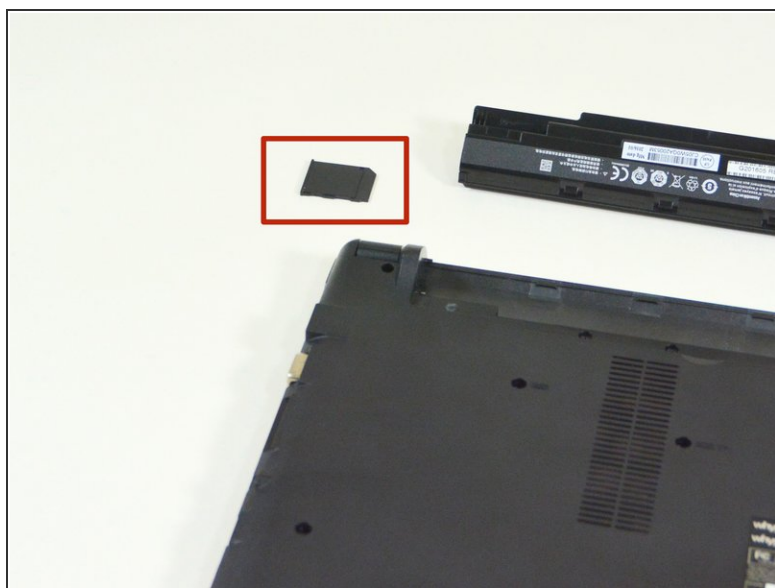
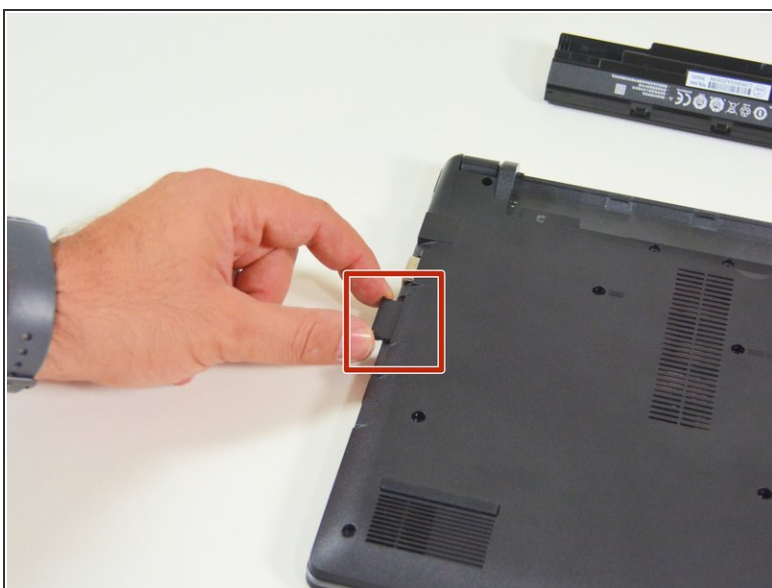
- [New Item](#) (1)
- [New Item](#) (1)
- [New Item](#) (1)
- [New Item](#) (1)

Step 1 — Battery



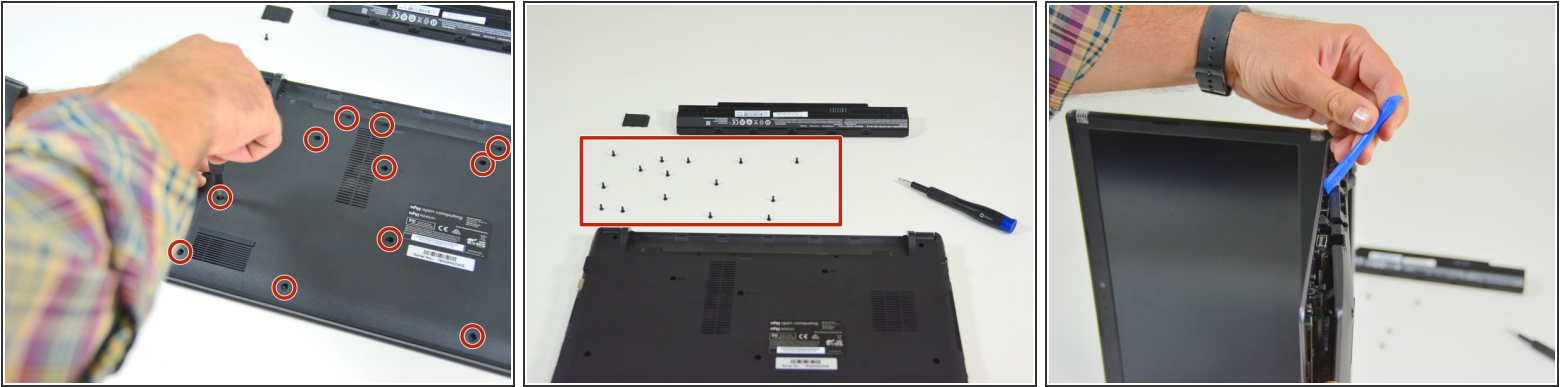
- Start by unlocking the right locking latch.
- Then, by simultaneously unlocking the left latch, lift the battery out of its socket.

Step 2 — Access to main components



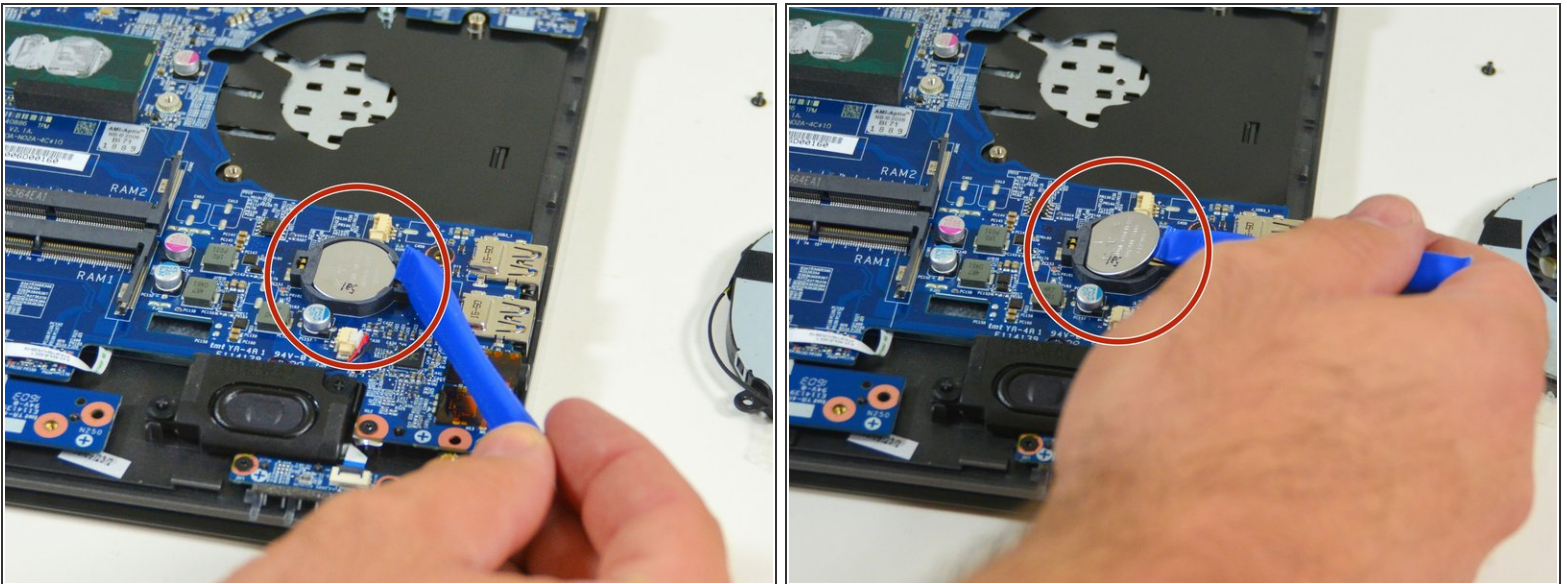
- Begin by spotting the dummy memory card.
- Then, remove it and put it on your workplan.

Step 3



- Locate the 15 screws that hold the bottom cover of the device in place.
- Unscrew them and place them on your work surface.
- Then, un-clip the bottom cover, starting with the side shown in the third picture.

Step 4 — BIOS stack



- To reassemble your device, follow the instructions in reverse order.
- Lift it gently and take it out of its place.

To reassemble your device, follow the instructions in reverse order.

This document was generated on 2019-09-29 06:58:58 AM (MST).

