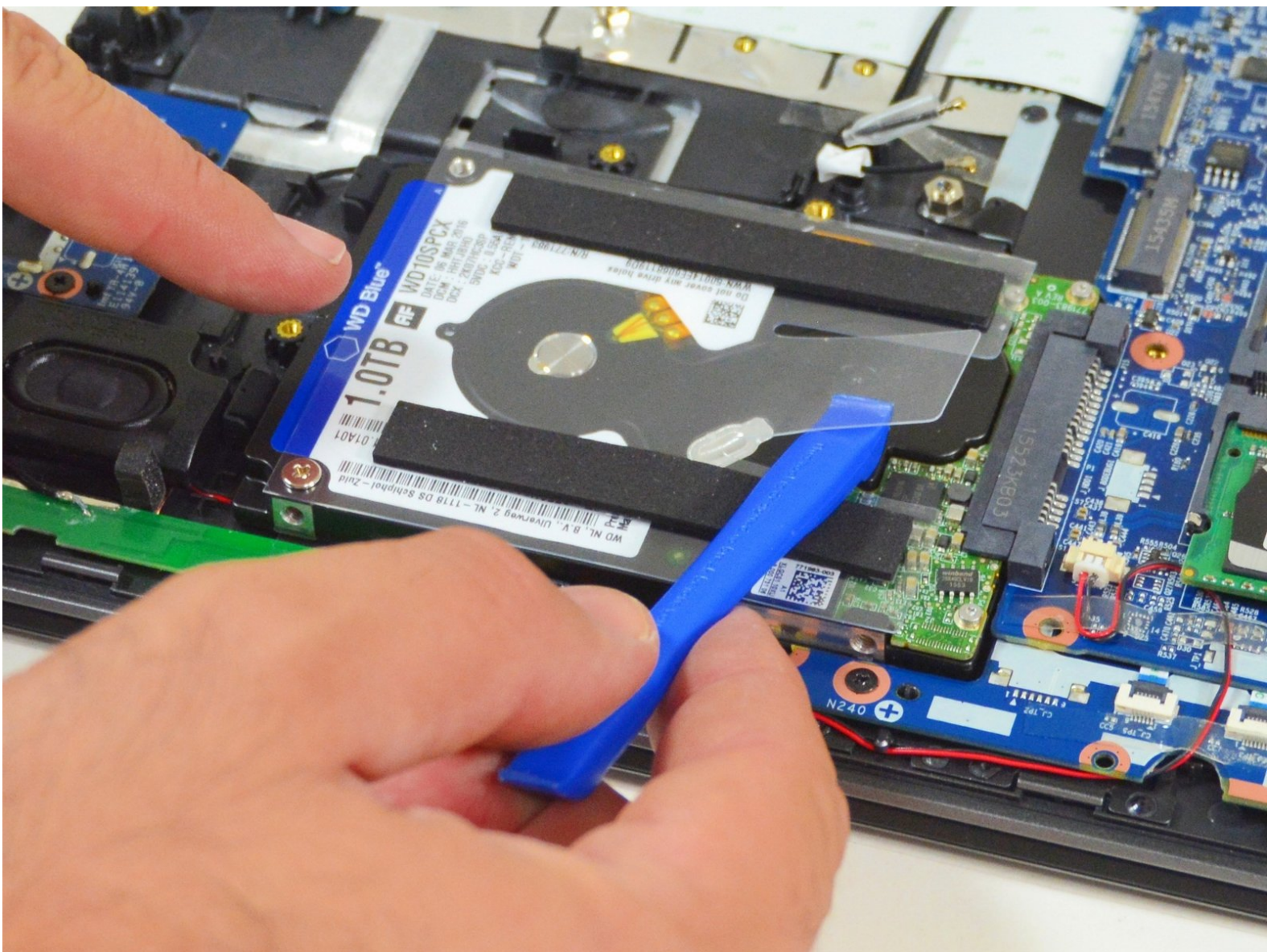




why! N240JU Hard disk replacement (mass storage)

Written By: Felice Suglia





TOOLS:

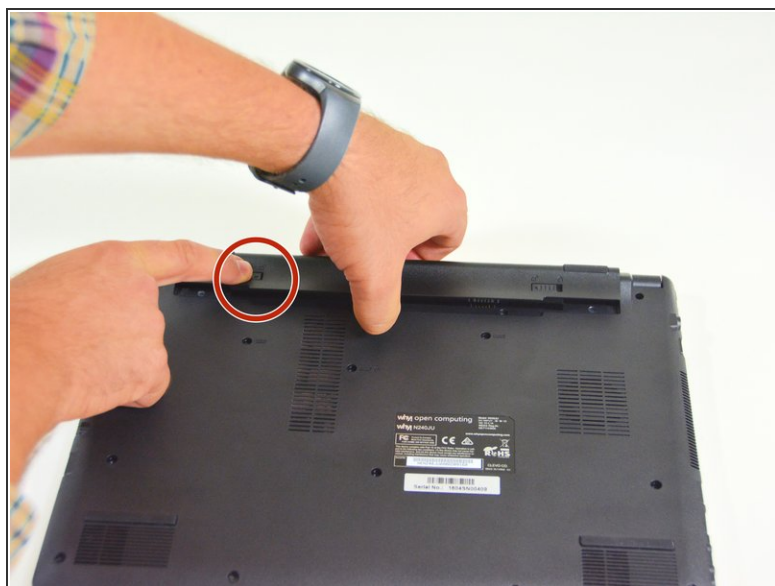
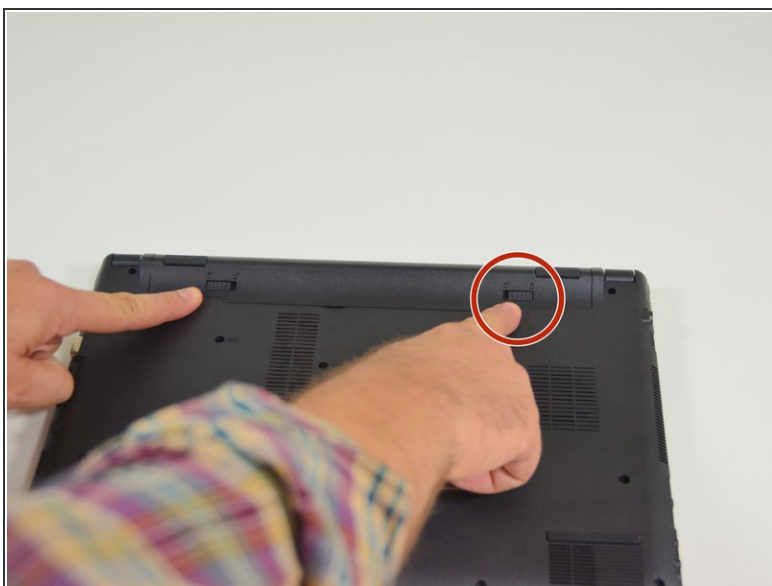
- [Phillips #0 Screwdriver](#) (1)



PARTS:

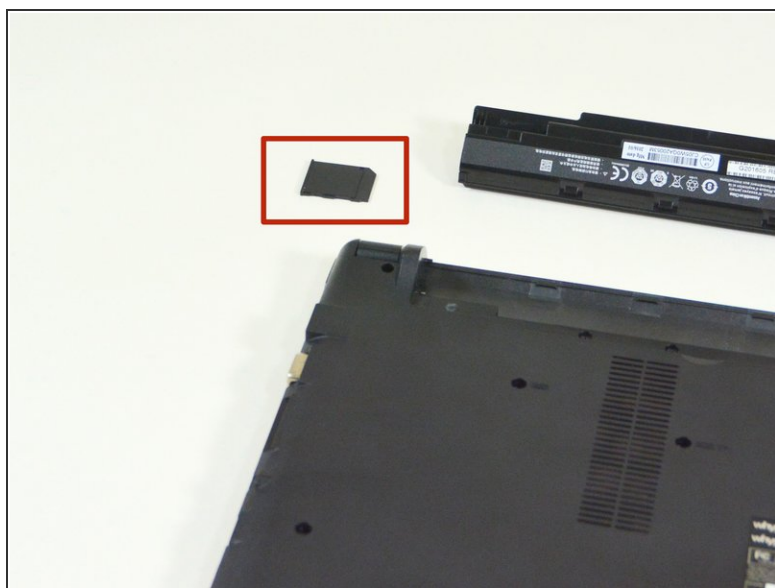
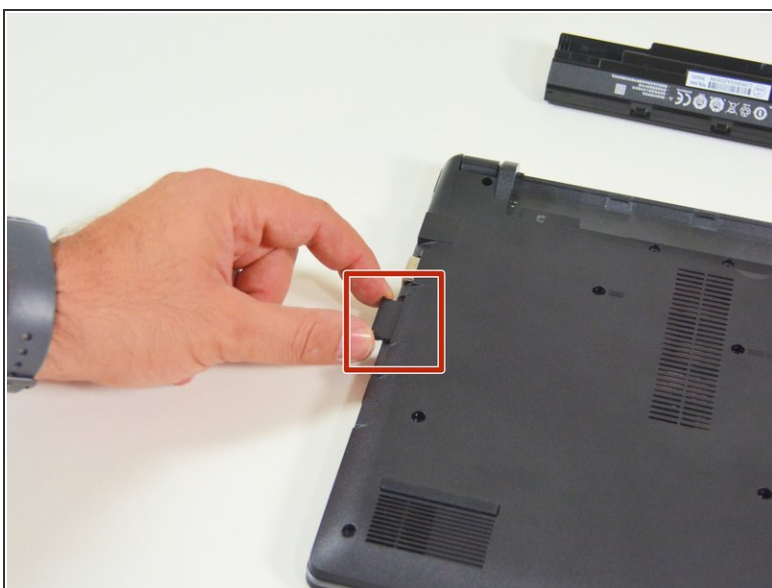
- [New Item](#) (1)
- [New Item](#) (1)
- [New Item](#) (1)
- [New Item](#) (1)

Step 1 — Battery



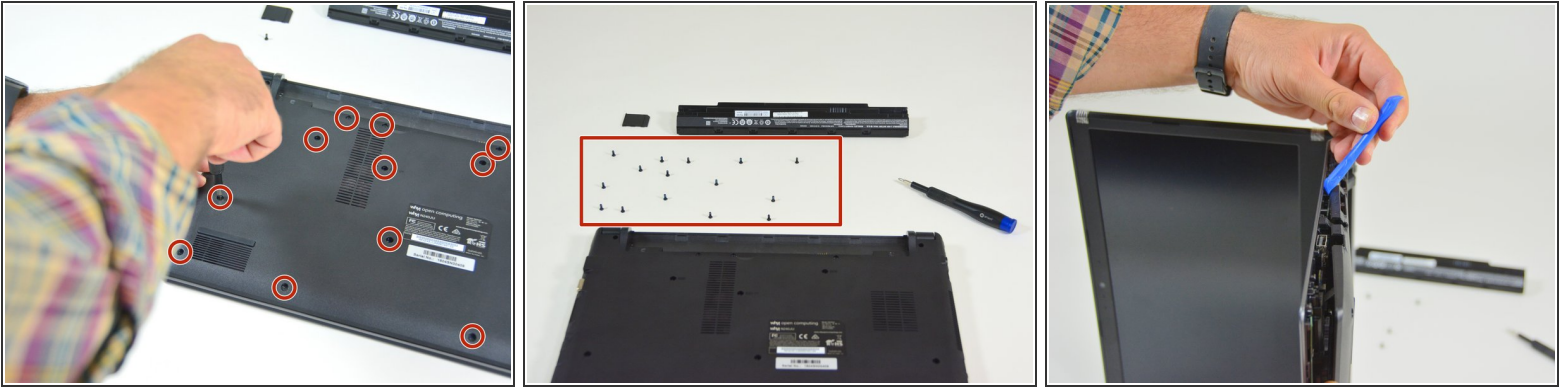
- Start by unlocking the right locking latch.
- Then, by simultaneously unlocking the left latch, lift the battery out of its socket.

Step 2 — Access to main components



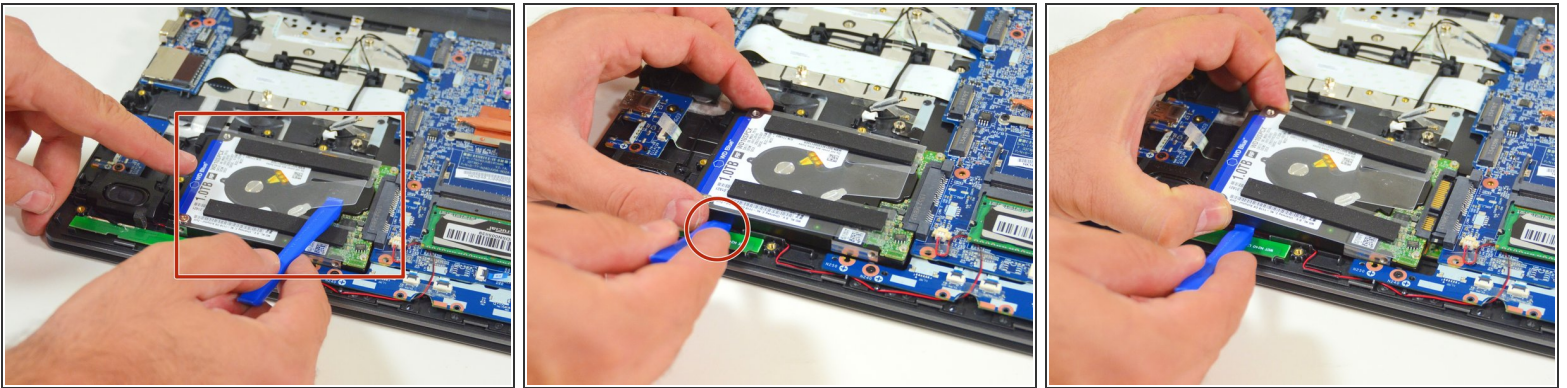
- Begin by spotting the dummy memory card.
- Then, remove it and put it on your workplan.

Step 3



- Locate the 15 screws that hold the bottom cover of the device in place.
- Unscrew them and place them on your work surface.
- Then, un-clip the bottom cover, starting with the side shown in the third picture.

Step 4 — Hard disk (mass storage)



- Locate the hard drive in its location.
- Lift it slightly.
- Finally remove it from its SATA connector.

To reassemble your device, Follow these instructions in reverse order.