



A black laptop with its back cover removed, showing internal components like the motherboard, RAM, and SSD. The keyboard is detached and lying in front of the laptop. The laptop has an Intel Core i7 sticker and an HDMI port.



TOOLS:

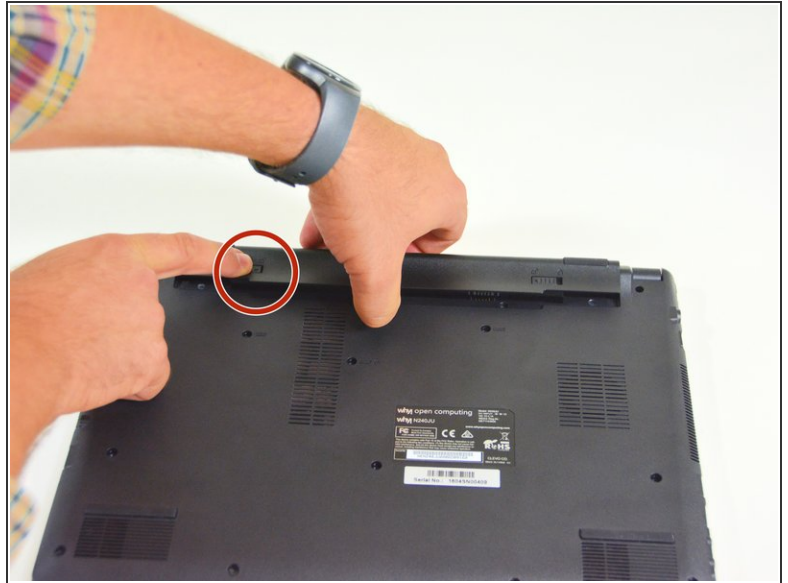
- [Phillips #0 Screwdriver](#) (1)



PARTS:

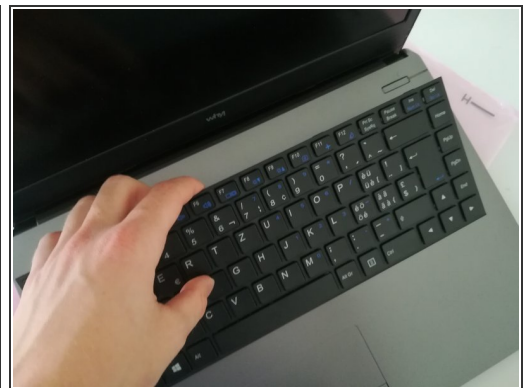
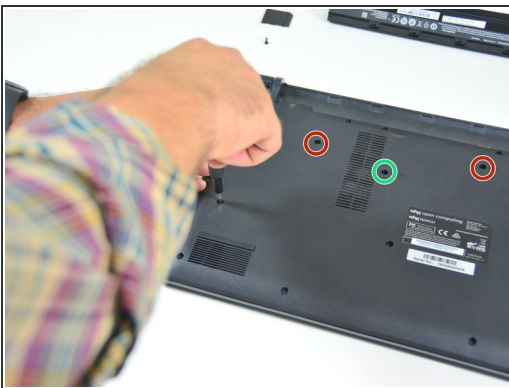
- [New Item](#) (1)
- [New Item](#) (1)
- [New Item](#) (1)
- [New Item](#) (1)

Step 1 — Battery



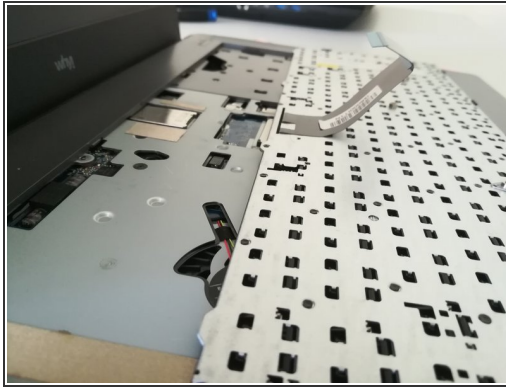
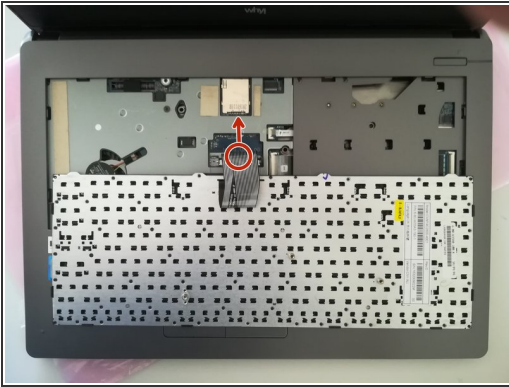
- Start by unlocking the right locking latch.
- Then, by simultaneously unlocking the left latch, lift the battery out of its socket.

Step 2 — The keyboard



- Unscrew the circled screws in green and red
- Put the computer in the position of the second image while pushing a paper clip into the hole of the screw circled in green until you hear a click
- Lift the keyboard

Step 3



- Disconnect the connector circled in red in the direction of the arrow

To reassemble your device, follow the instructions in reverse order.