



why! N650DU Pile BIOS

Written By: Felice Suglia

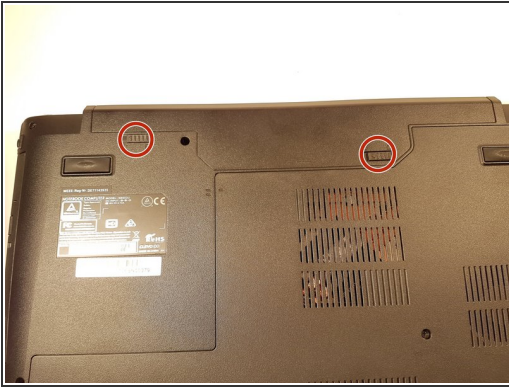




PARTS:

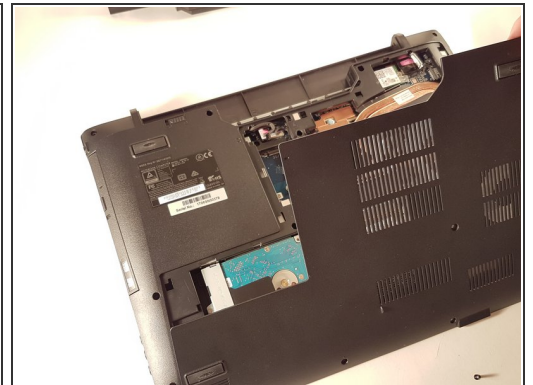
- [New Item](#) (1)
- [New Item](#) (1)

Step 1 — The Batteries



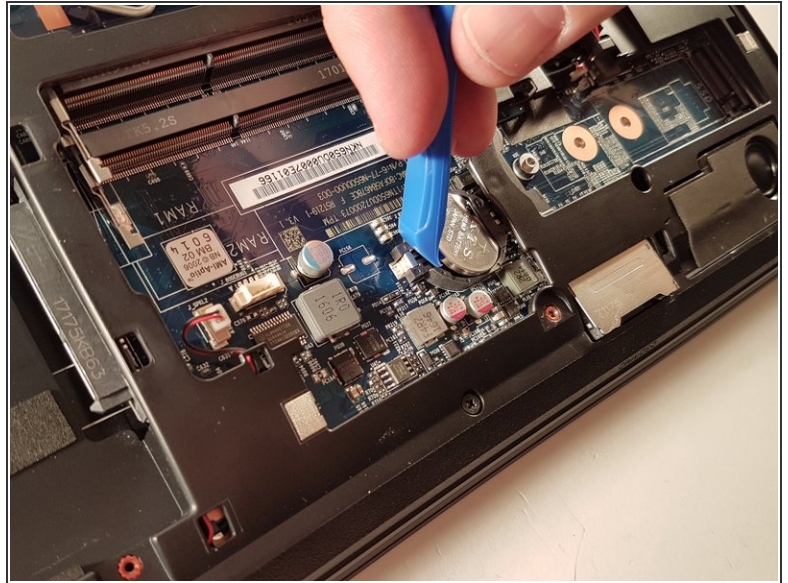
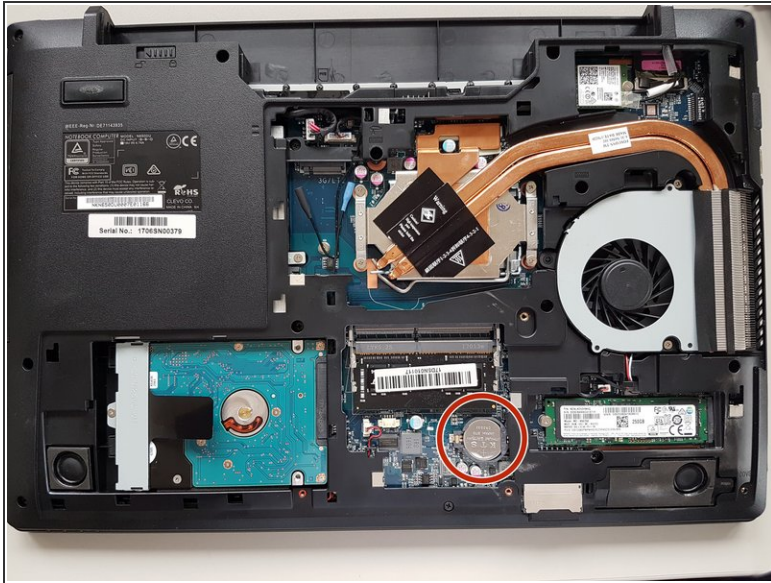
- Unlock the button without spring
- Slide the battery up while unlocking the button with spring

Step 2 — Access to major components



- Unscrew the two large screws circled in red
- Unscrew the two small screws circled in green
- Slide the plate down and lift the

Step 3 — Pile BIOS



- Remove the battery using a flat screwdriver

To reassemble your device, Follow these instructions in reverse order.