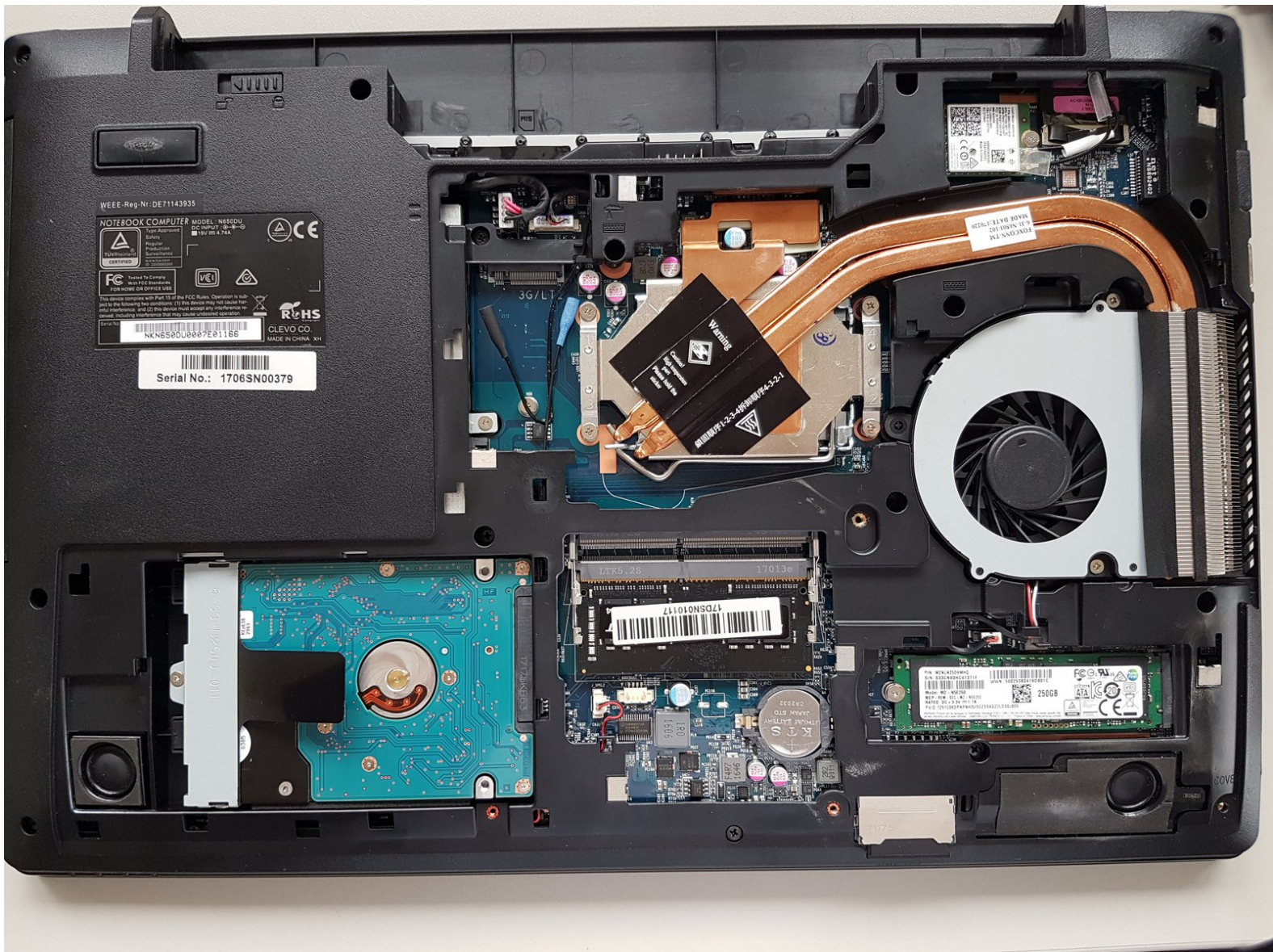




why! N650DU Access to major components

Written By: Felice Suglia

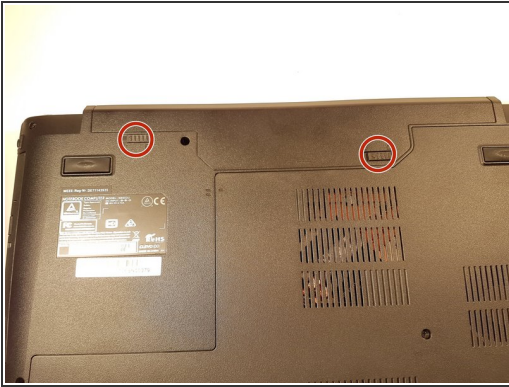




TOOLS:

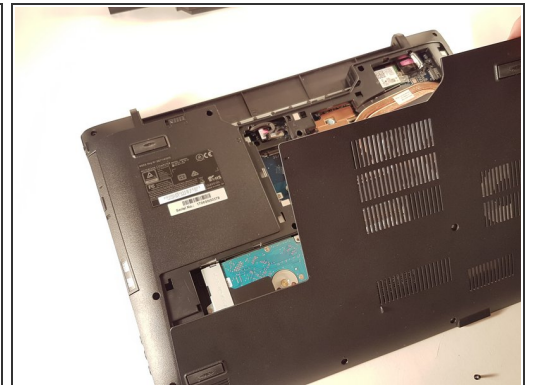
- [Tournevis Cruciforme PH1](#) (1)
-

Step 1 — The Batteries



- Unlock the button without spring
- Slide the battery up while unlocking the button with spring

Step 2 — Access to major components



- Unscrew the two large screws circled in red
- Unscrew the two small screws circled in green
- Slide the plate down and lift the

To reassemble your device, follow the instructions in reverse order.