



why! N650DU Carte WLAN

Written By: Felice Suglia



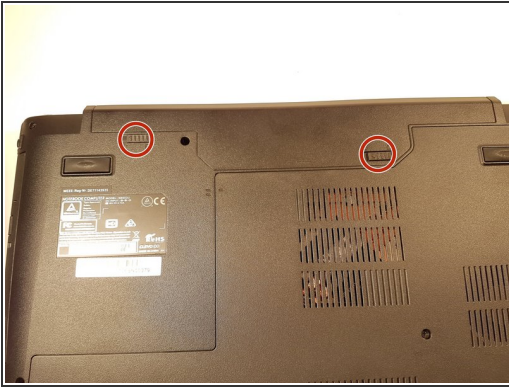
**TOOLS:**

- [Tournevis Cruciforme PH1](#) (1)

**PARTS:**

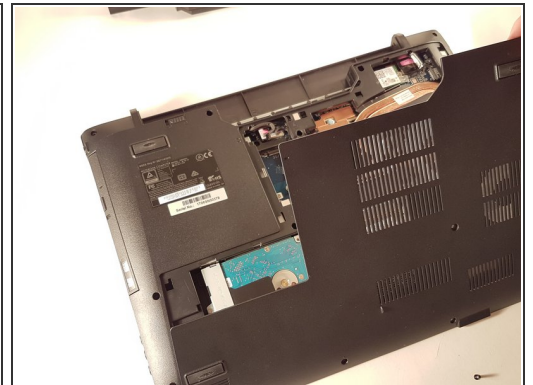
- [New Item](#) (1)
- [New Item](#) (1)

Step 1 — The Batteries



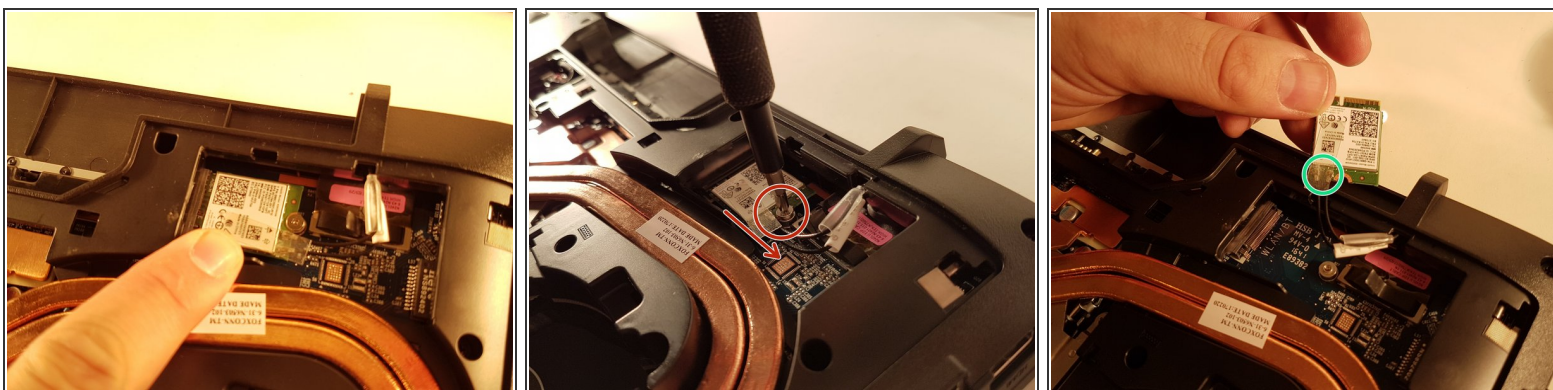
- Unlock the button without spring
- Slide the battery up while unlocking the button with spring

Step 2 — Access to major components



- Unscrew the two large screws circled in red
- Unscrew the two small screws circled in green
- Slide the plate down and lift the

Step 3 — Carte WLAN



- Unscrew the screw circled in red
- Disconnect the WLAN card in the direction of the red arrow
- Unhook the two connectors circled in green on the WLAN card

To reassemble your device, Follow these instructions inverse order.