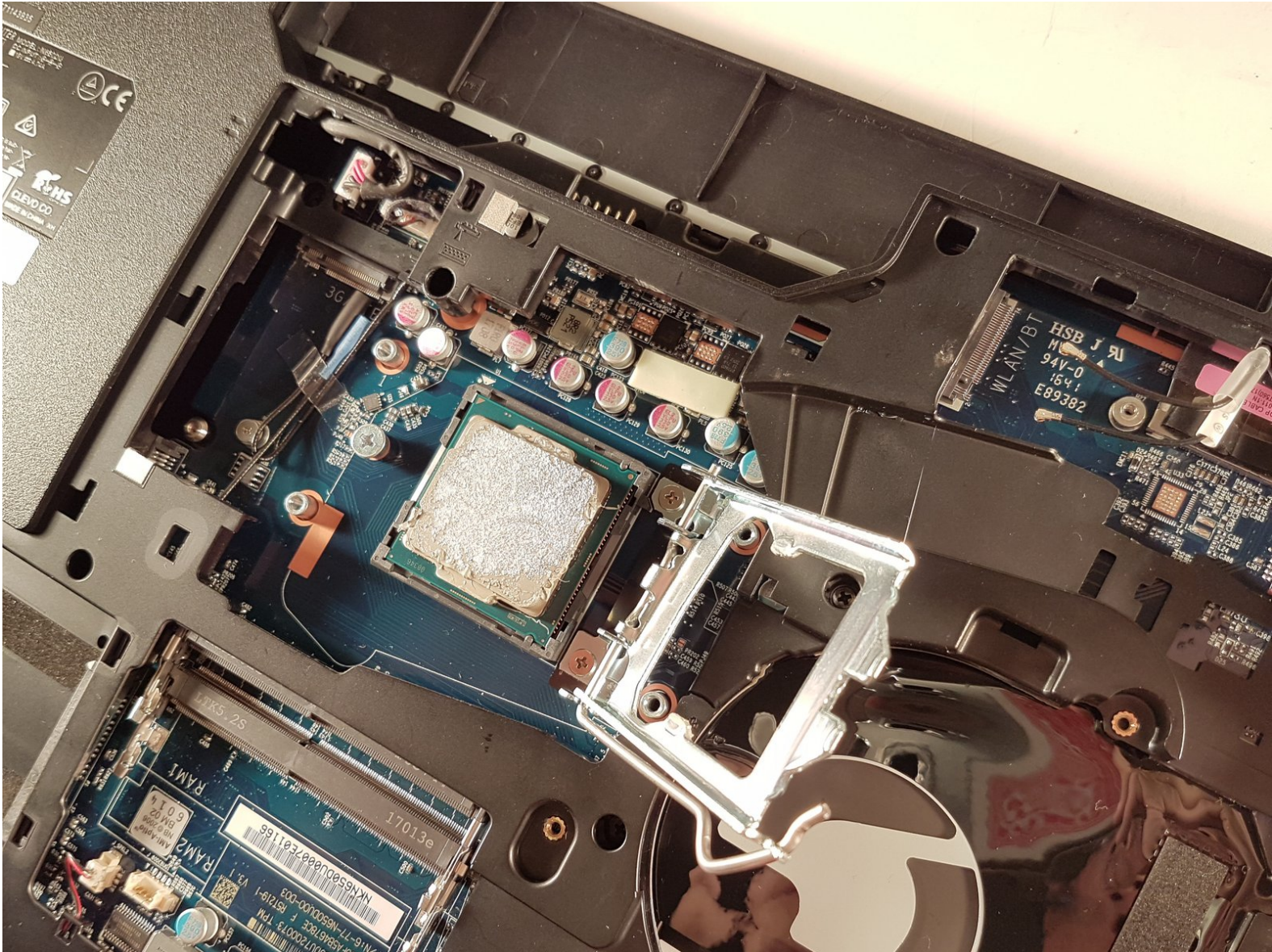




# why! N650DU Processor

Written By: Felice Suglia



**TOOLS:**

- [Tournevis Cruciforme PH1](#) (1)

**PARTS:**

- [New Item](#) (1)
- [New Item](#) (1)



## Step 1 — The Batteries



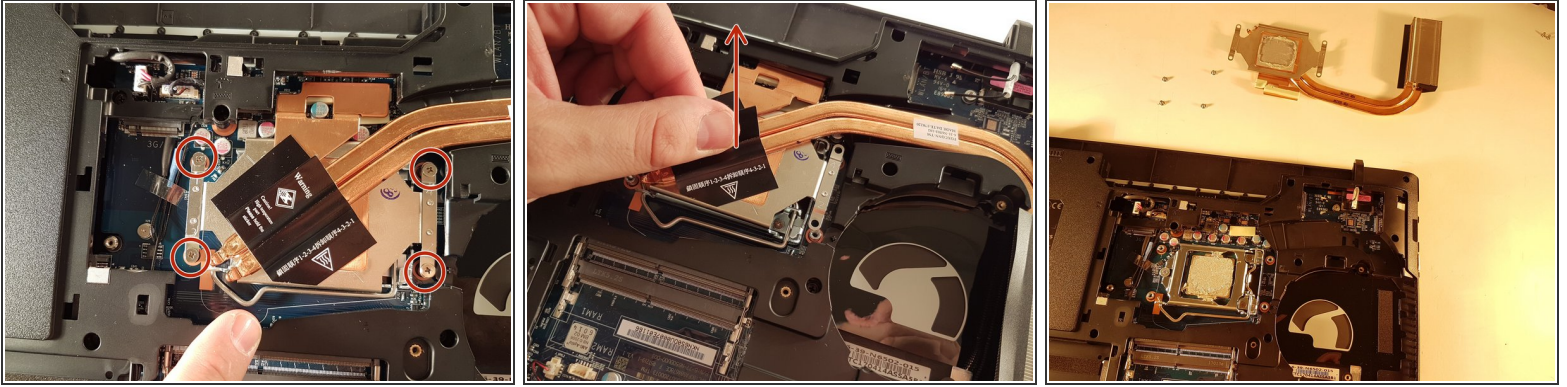
- Unlock the button without spring
- Slide the battery up while unlocking the button with spring

## Step 2 — Access to major components



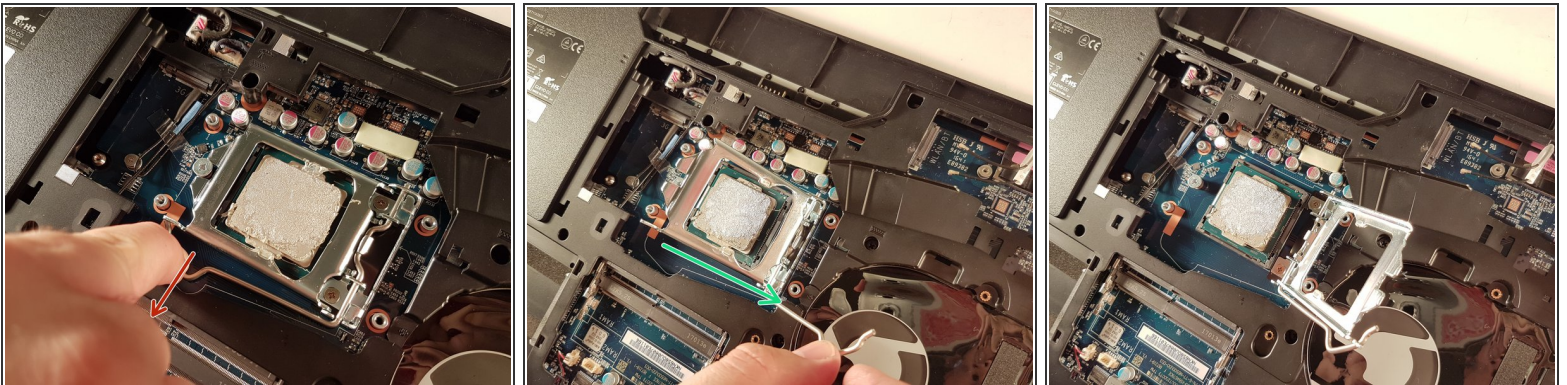
- Unscrew the two large screws circled in red
- Unscrew the two small screws circled in green
- Slide the plate down and lift the

## Step 3 — Processor



- Unscrew the four screws circled in red
- Lift the radiator with the black label

## Step 4



- Push the lever in the direction of the red arrow while pushing it in
- Lift the lever in the direction of the green arrow
- **Do not touch the bottom of the processor and take it by the sides**

To reassemble your device, Follow these instructions in reverse order.