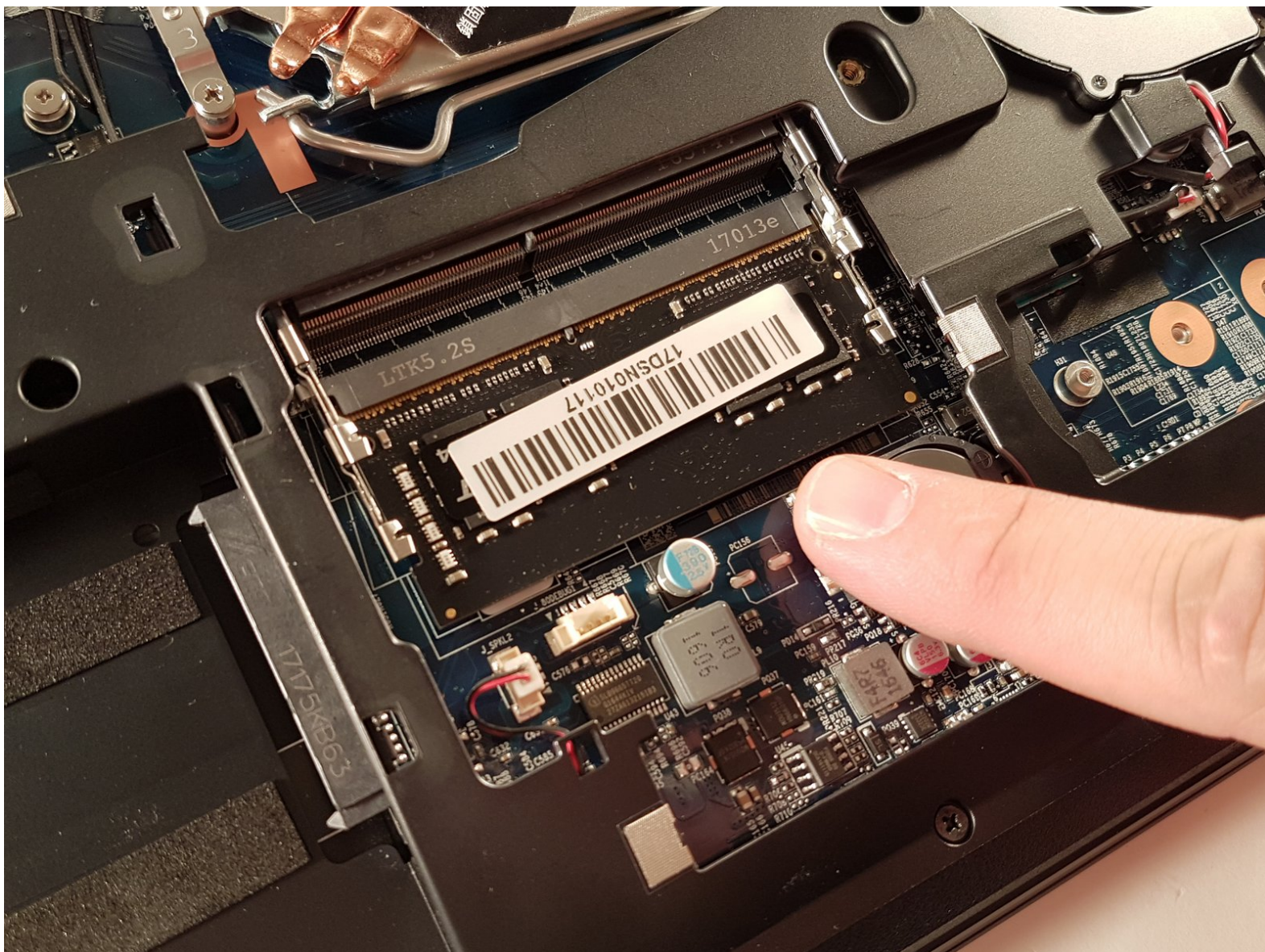




why! N650DU RAM Memory

Written By: Felice Suglia

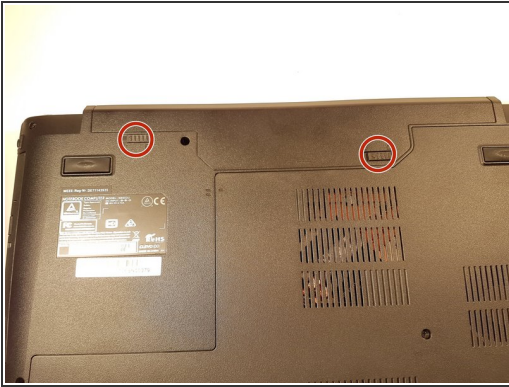




PARTS:

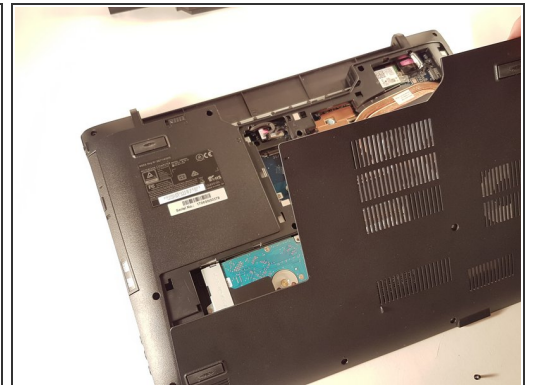
- [New Item](#) (1)
 - [New Item](#) (1)
-

Step 1 — The Batteries



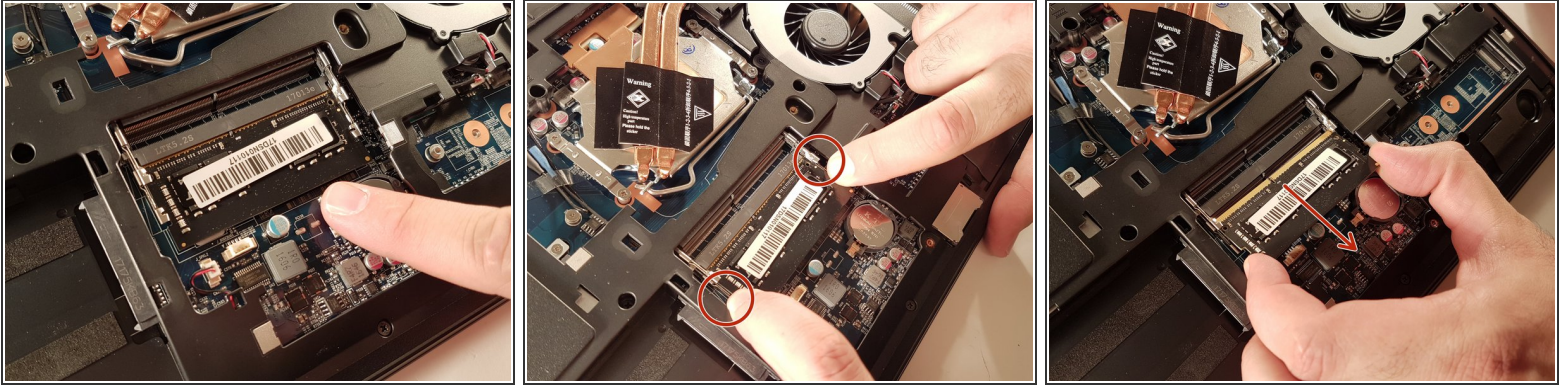
- Unlock the button without spring
- Slide the battery up while unlocking the button with spring

Step 2 — Access to major components



- Unscrew the two large screws circled in red
- Unscrew the two small screws circled in green
- Slide the plate down and lift the

Step 3 — RAM memory



- Spread the two arms holding the RAM bar
- Remove the RAM card

To reassemble your device, follow the instructions in reverse order.