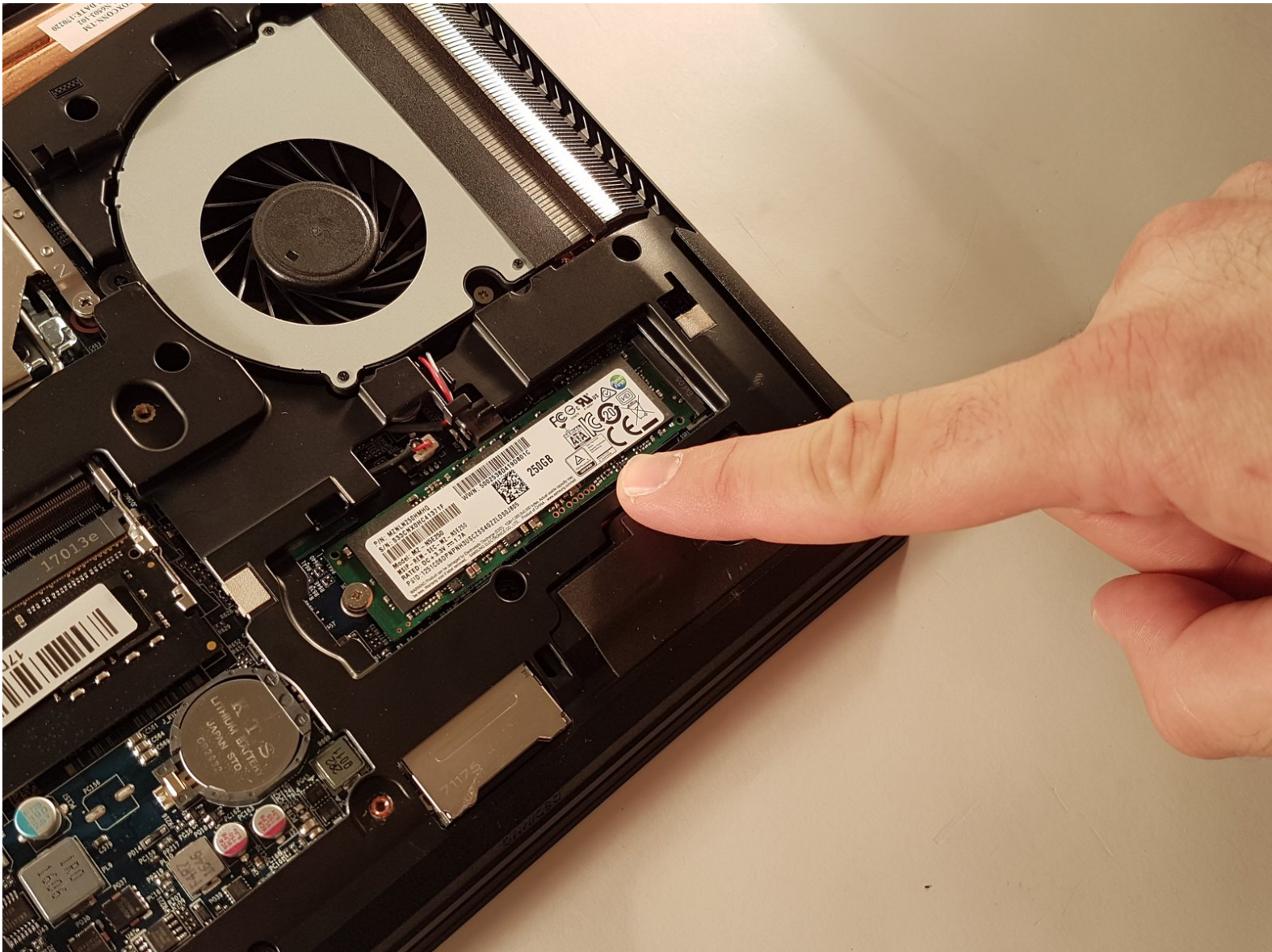




why! N650DU SSD disk

Written By: Felice Suglia





TOOLS:

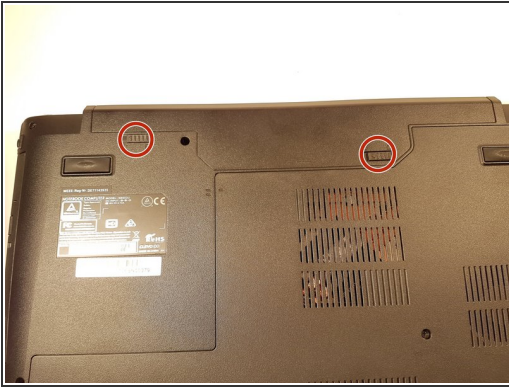
- [Tournevis Cruciforme PH1](#) (1)



PARTS:

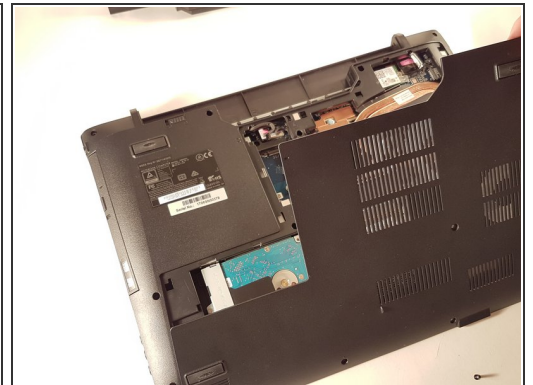
- [New Item](#) (1)
- [New Item](#) (1)

Step 1 — The Batteries



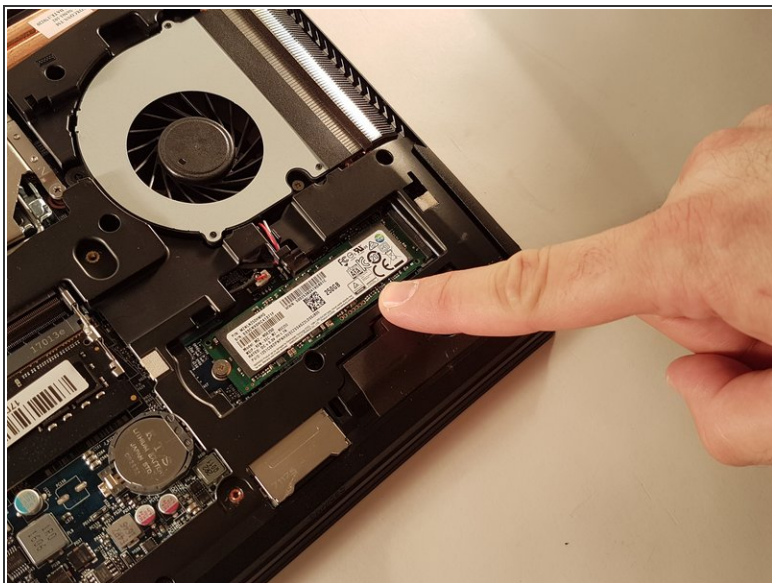
- Unlock the button without spring
- Slide the battery up while unlocking the button with spring

Step 2 — Access to major components



- Unscrew the two large screws circled in red
- Unscrew the two small screws circled in green
- Slide the plate down and lift the

Step 3 — SSD disk



- Unscrew the screw circled in red
- Remove the SSD

To reassemble your device, follow the instructions in reverse order.