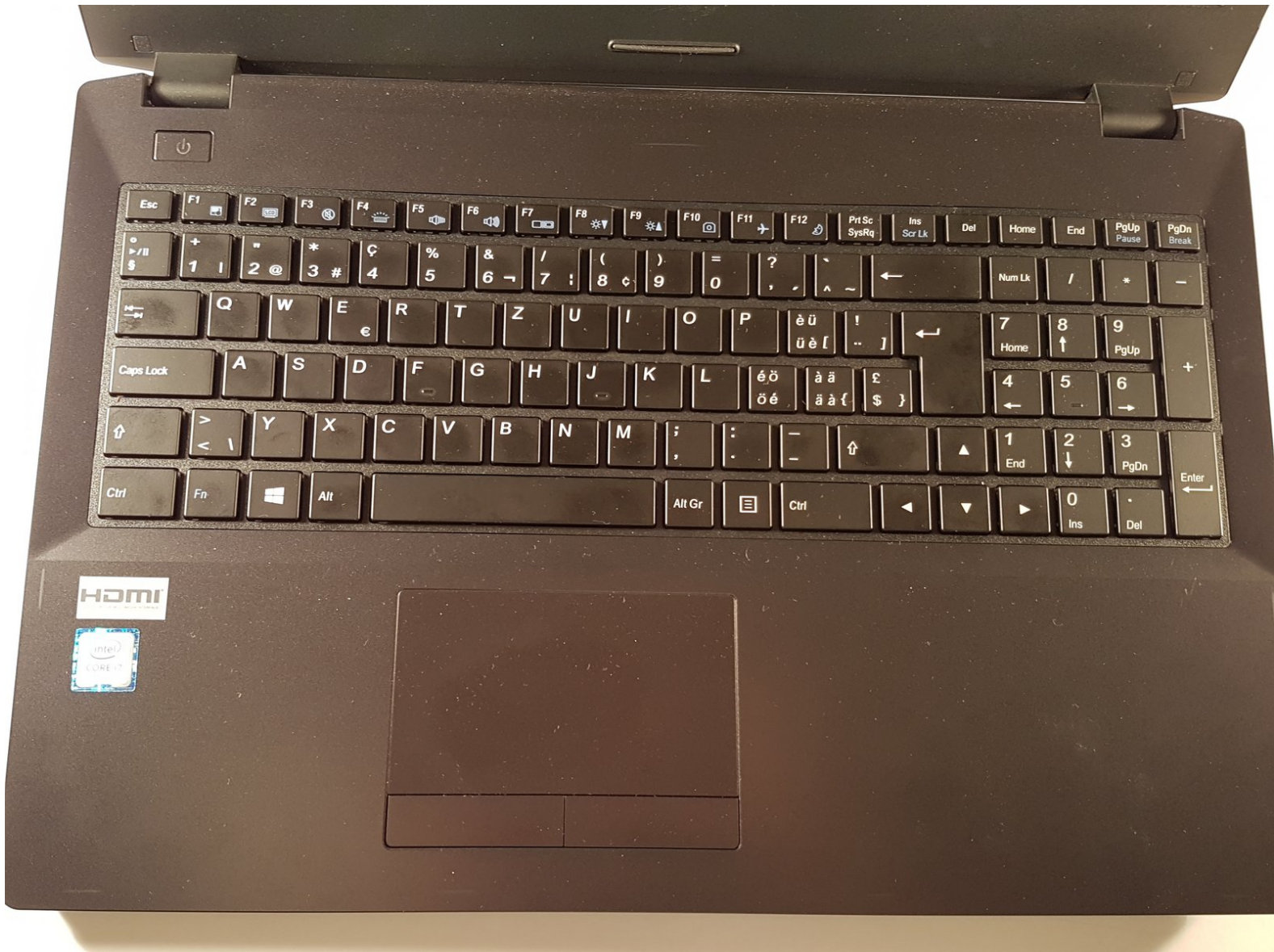




# why! N650DU The Keyboard

Written By: Felice Suglia



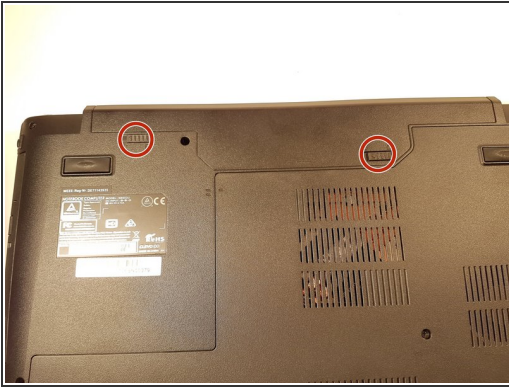
**TOOLS:**

- [Tournevis Cruciforme PH1](#) (1)

**PARTS:**

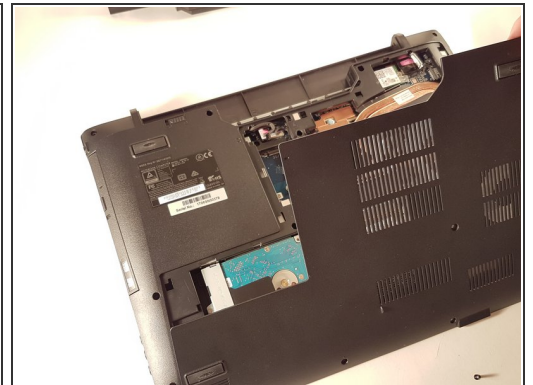
- [New Item](#) (1)
- [New Item](#) (1)

## Step 1 — The Batteries



- Unlock the button without spring
- Slide the battery up while unlocking the button with spring

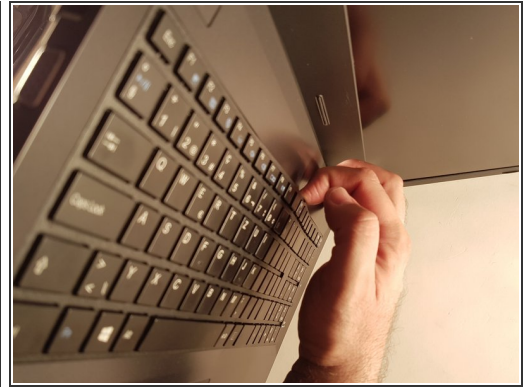
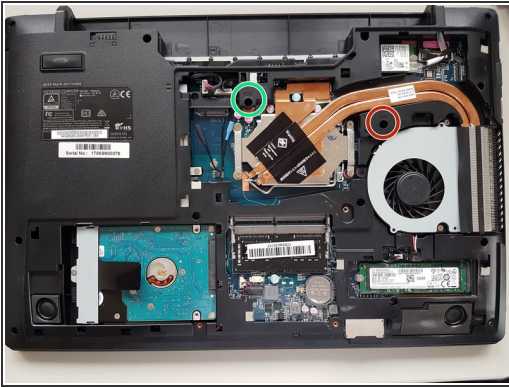
## Step 2 — Access to major components



- Unscrew the two large screws circled in red
- Unscrew the two small screws circled in green
- Slide the plate down and lift the

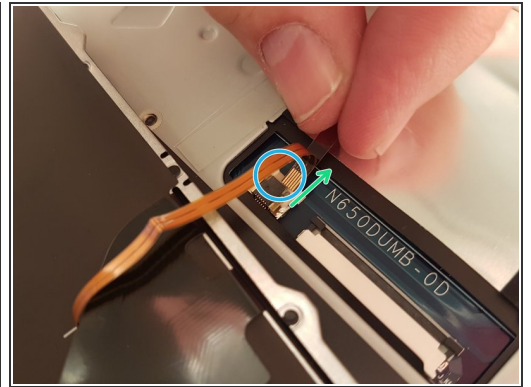
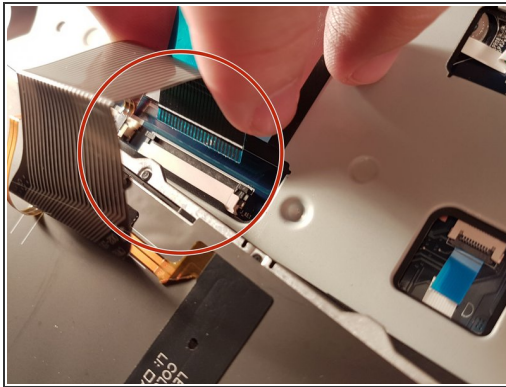
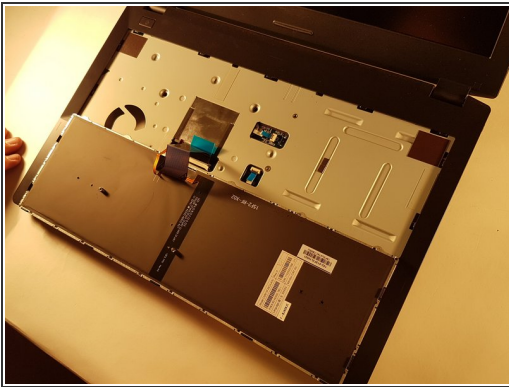


## Step 3 — The keyboard



- Unscrew the circled screws in red and green
- Put the computer in the position of the second image while pushing a paper clip into the hole of the screw circled in green until you hear a click
- Lift the keyboard

## Step 4



- Remove the red circled connector
- Pull the white drawer that holds the connector circled in blue in the direction of the green arrow
- Remove the connector surrounded in blue

To reassemble your device, follow the instructions in reverse order.