



# why! N650DU The LCD screen

Written By: Felice Suglia



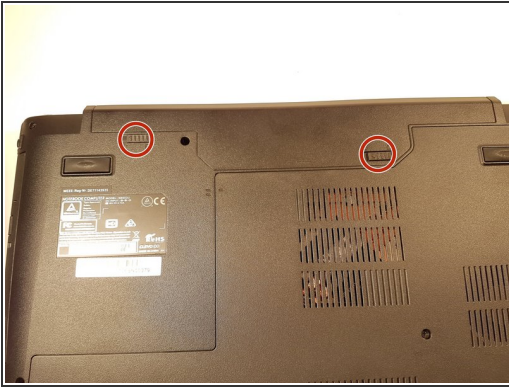
**TOOLS:**

- [Tornevis Cruciforme PH1](#) (1)

**PARTS:**

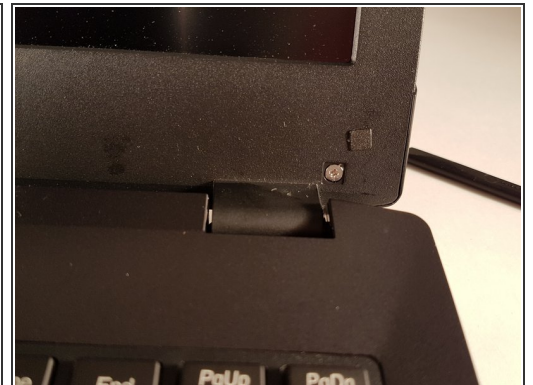
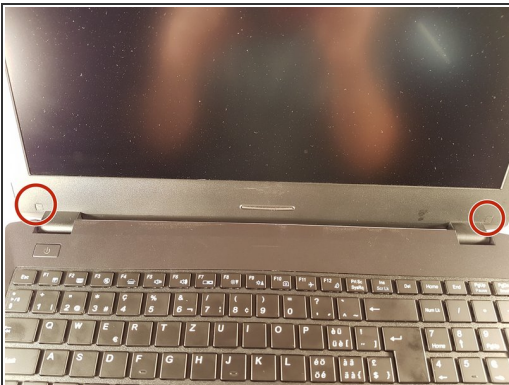
- [New Item](#) (1)
- [New Item](#) (1)

## Step 1 — The Batteries



- Unlock the button without spring
- Slide the battery up while unlocking the button with spring

## Step 2 — LCD screen



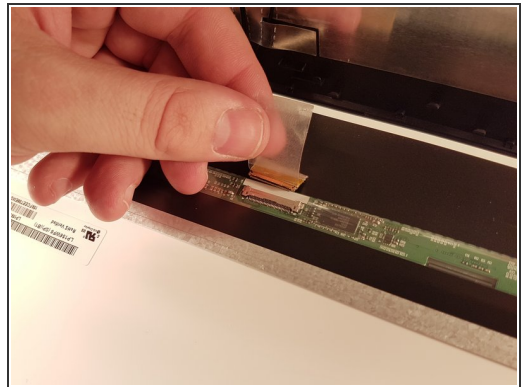
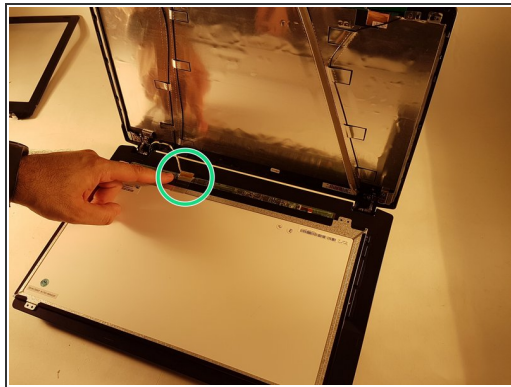
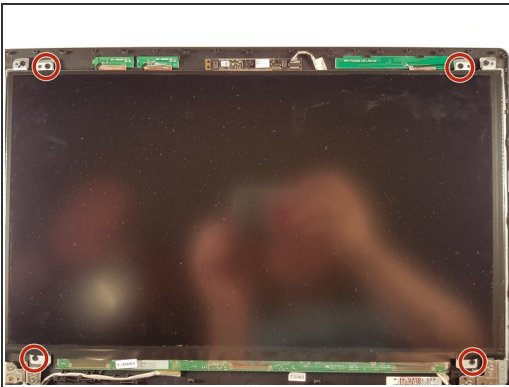
- Remove the two stickers circled in red
- Unscrew the two screws

### Step 3



- Tilt back the screen
- Remove the frame from the screen

### Step 4



- Unscrew the four screws circled in red
- Put the screen gently on the keyboard
- Remove the piece of tape then disconnect the connector surrounded in green

To reassemble your device, follow the instructions in reverse order.