

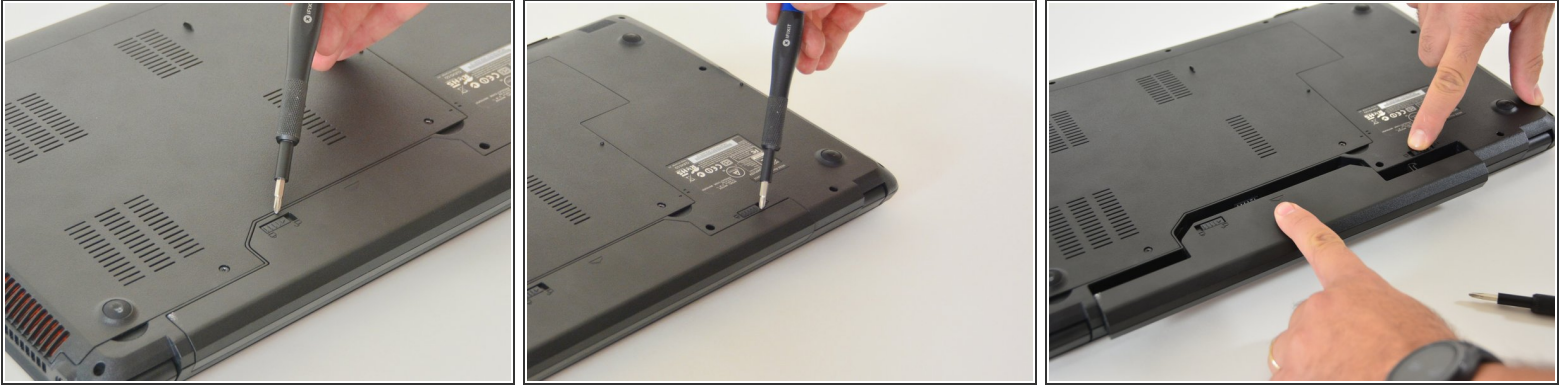


why! Replace the W670SZQ1 SSD hard drive

Written By: Felice Suglia

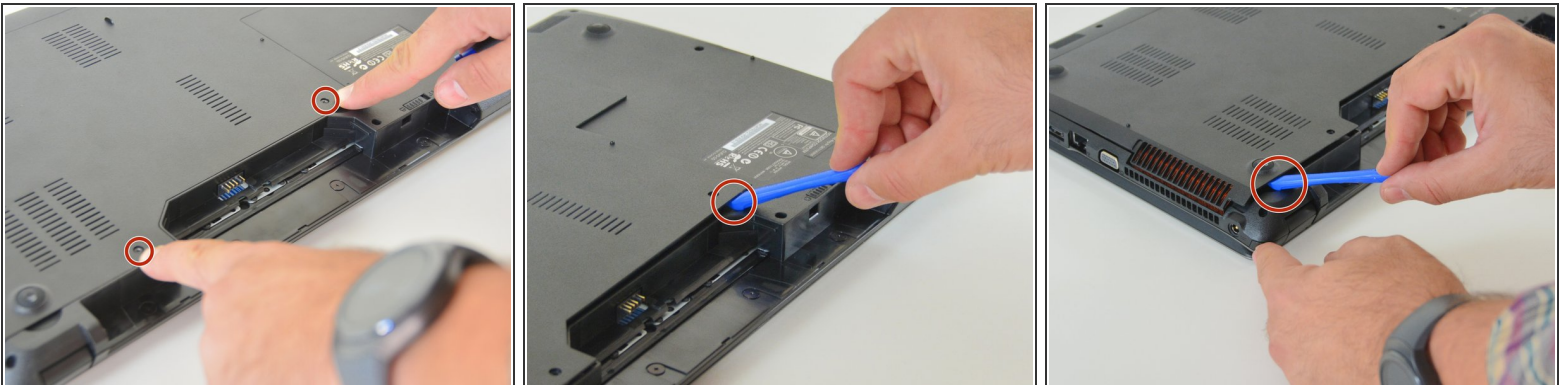


Step 1 — accumulator



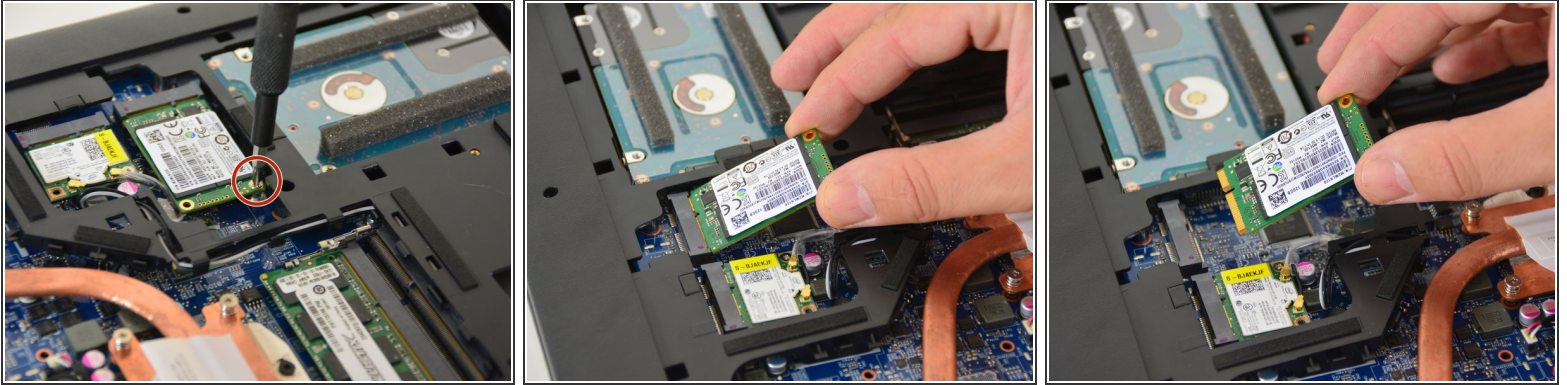
- Open the latch of the accumulator on the left side.
- Open the battery latch on the right side.
- Remove the accumulator by simultaneously holding the right-hand latch open.

Step 2 — Access to the most important components



- Use the Philips screwdriver to remove the two screws at the bottom of the cover.
- Lift the cover at the bottom right with the iFixit Opening Tool
- Lift the cover at the bottom left with the iFixit Opening Tool
- Finally, remove the cover to gain access to the most important components.

Step 3 — SSD hard drive



- Remove the retaining screw of the SSD hard drive with the Philips screwdriver.
- Remove the SSD hard drive.

Repeat the steps in reverse order to reassemble your device.