



why! W670SZQ1 Access to Major Components

Written By: Felice Suglia

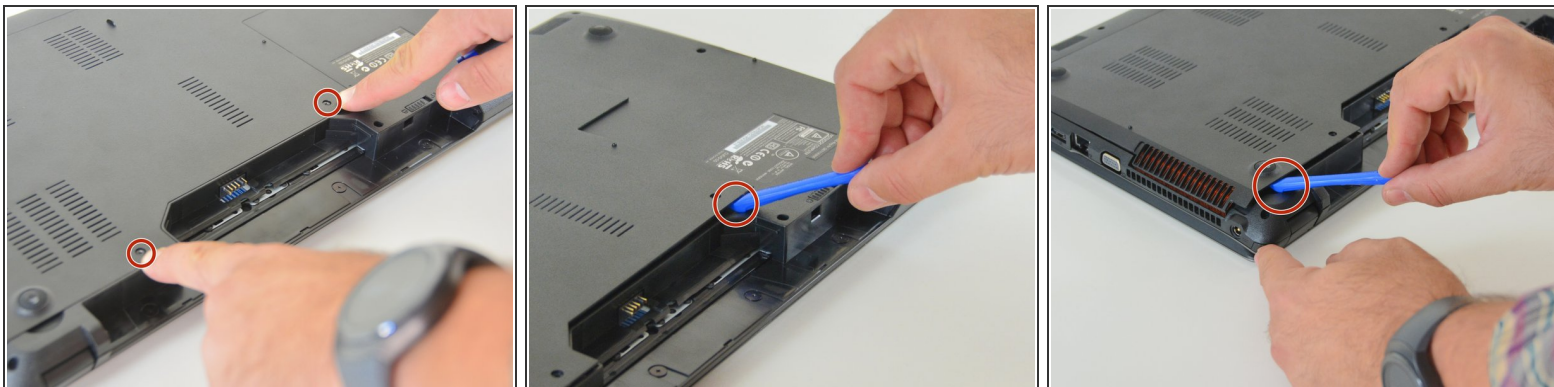




TOOLS:

- [Phillips #0 Screwdriver](#) (1)
 - [iFixit Opening Tool](#) (1)
-

Step 1 — Access to Major Components



- Using the Philips # 0 screwdriver, unscrew the 2 screws from the bottom cover.
- Lift the bottom right cover with the iFixit Opening Tool.
- Lift the lower left cover with the iFixit Opening Tool.
- Finally clear the bottom cover completely to access the main components.

To reassemble your device, Follow these instructions in reverse order.