



why! W670SZQ1 Access to the most important components

Written By: Felice Suglia





TOOLS:

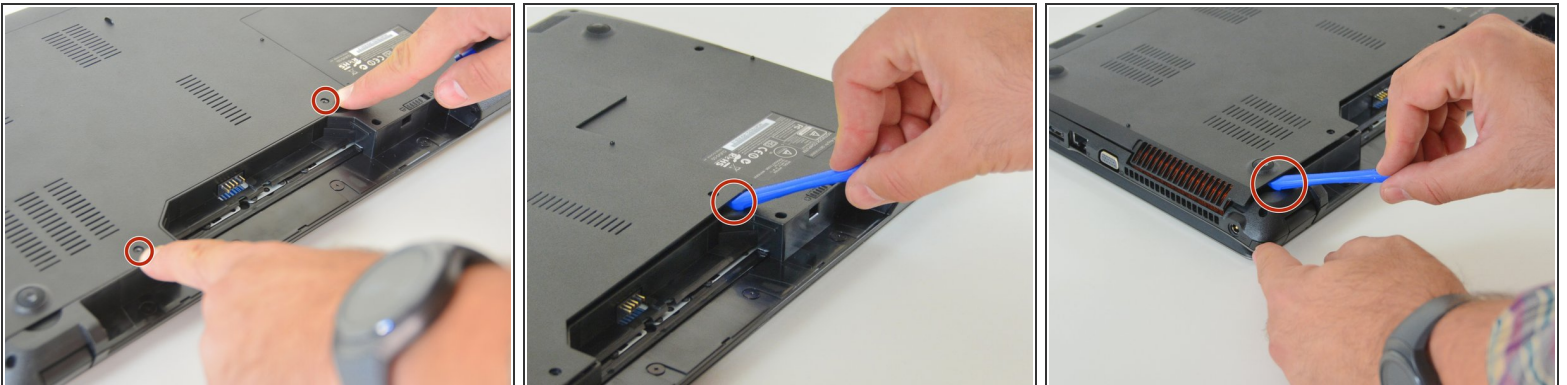
- [Phillips #0 Screwdriver](#) (1)
 - [iFixit Opening Tool](#) (1)
-

Step 1 — accumulator



- Open the latch of the accumulator on the left side.
- Open the battery latch on the right side.
- Remove the accumulator by simultaneously holding the right-hand latch open.

Step 2 — Access to the most important components



- Use the Philips screwdriver to remove the two screws at the bottom of the cover.
- Lift the cover at the bottom right with the iFixit Opening Tool
- Lift the cover at the bottom left with the iFixit Opening Tool
- Finally, remove the cover to gain access to the most important components.

Repeat the steps in order to reassemble your device.