



why! W670SZQ1 BIOS Replacement Battery

Written By: Felice Suglia





PARTS:

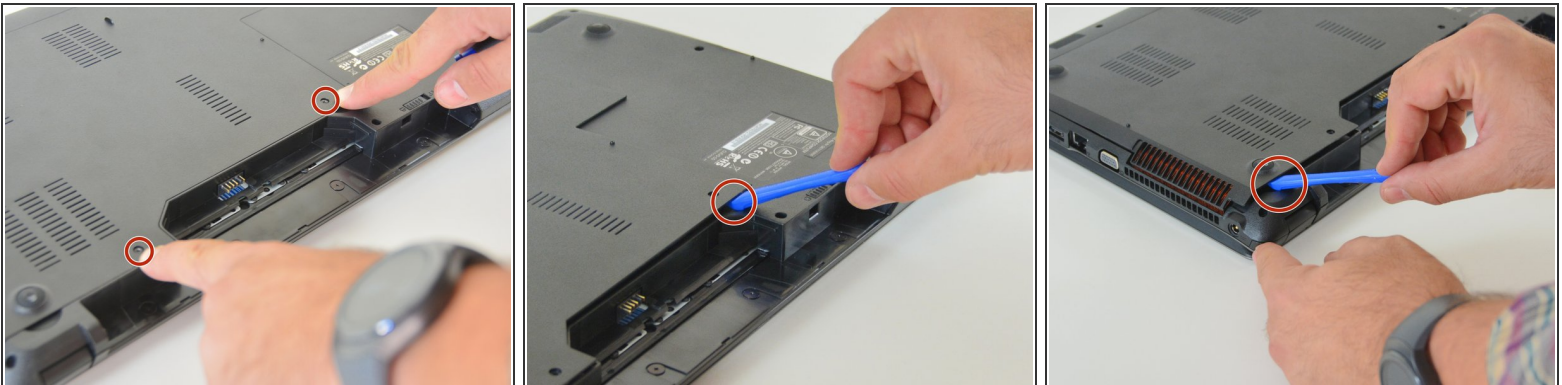
- [New Item](#) (1)
 - [New Item](#) (1)
-

Step 1 — The Batteries



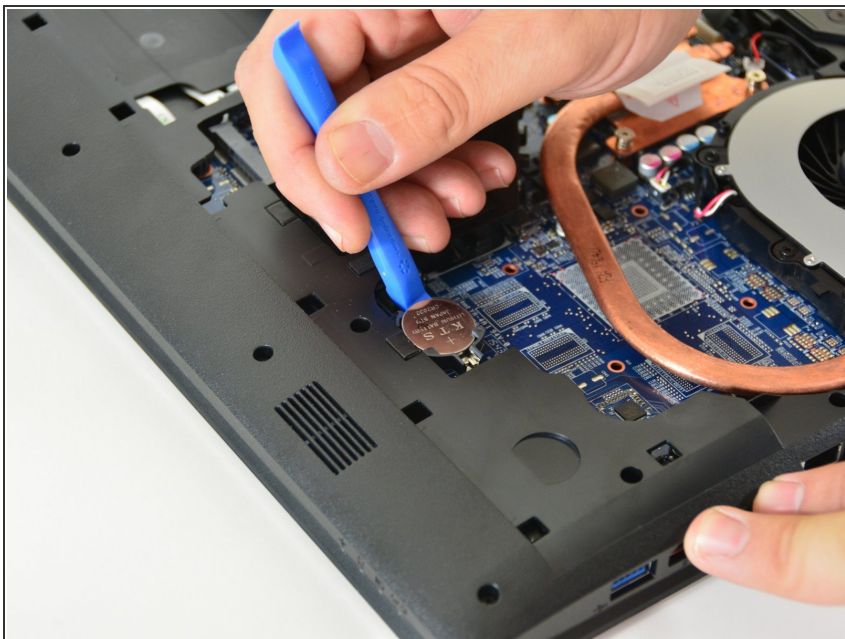
- Unlock the lock latch on the left.
- Unlock the lock latch on the right.
- Remove the battery while holding the lock latch unlocked.

Step 2 — Access to Major Components



- Using the Philips # 0 screwdriver, unscrew the 2 screws from the bottom cover.
- Lift the bottom right cover with the iFixit Opening Tool.
- Lift the lower left cover with the iFixit Opening Tool.
- Finally clear the bottom cover completely to access the main components.

Step 3 — The BIOS stack



- Lift and carefully remove the battery from its holder.
- Do not put the battery in the trash. In Switzerland, all businesses in the electronics and home appliance sector are required to take back batteries and accumulators for recycling

To reassemble your device, follow the instructions in reverse order.