



why! W670SZQ1 Keyboard Replacement

Written By: Felice Suglia





PARTS:

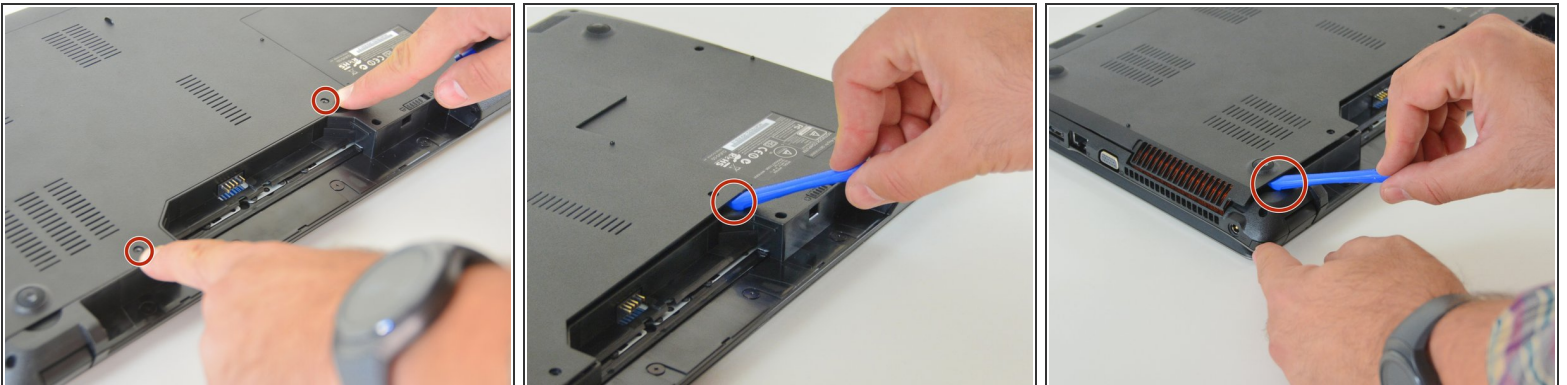
- [New Item](#) (1)
- [New Item](#) (1)

Step 1 — The Batteries



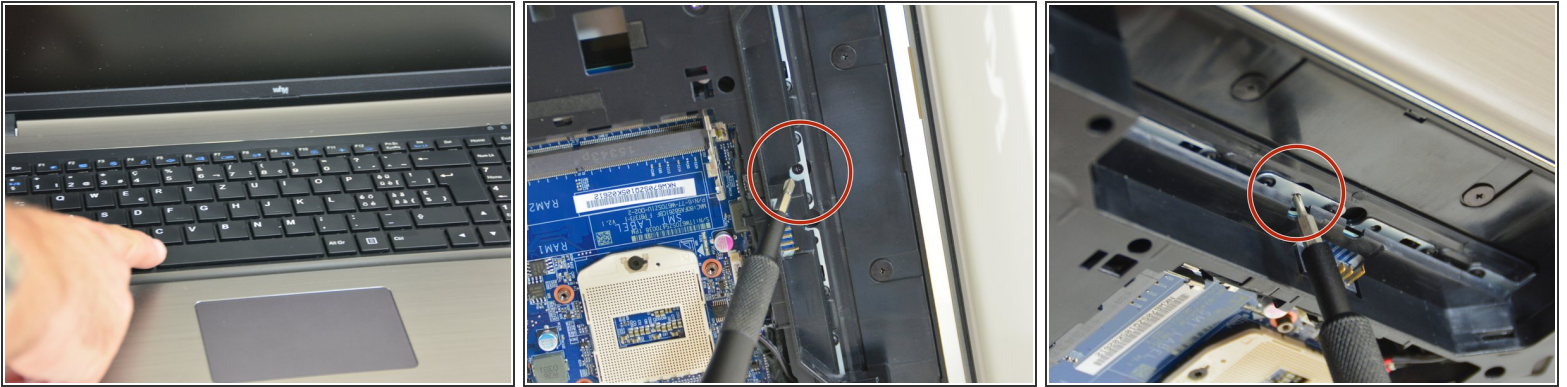
- Unlock the lock latch on the left.
- Unlock the lock latch on the right.
- Remove the battery while holding the lock latch unlocked.

Step 2 — Access to Major Components



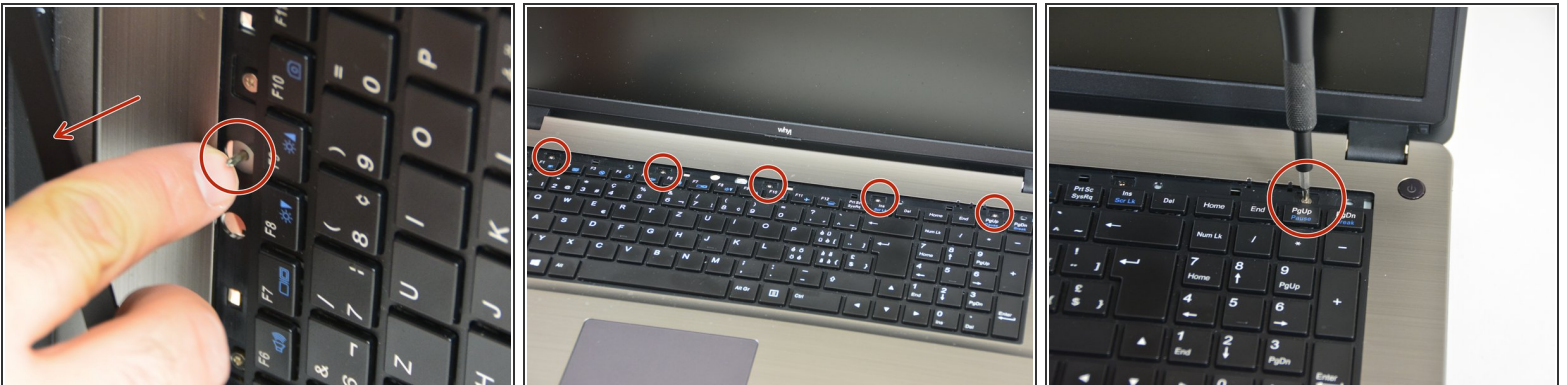
- Using the Philips # 0 screwdriver, unscrew the 2 screws from the bottom cover.
- Lift the bottom right cover with the iFixit Opening Tool.
- Lift the lower left cover with the iFixit Opening Tool.
- Finally clear the bottom cover completely to access the main components.

Step 3 — The keyboard



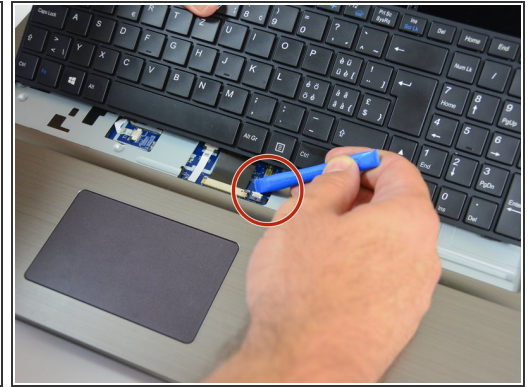
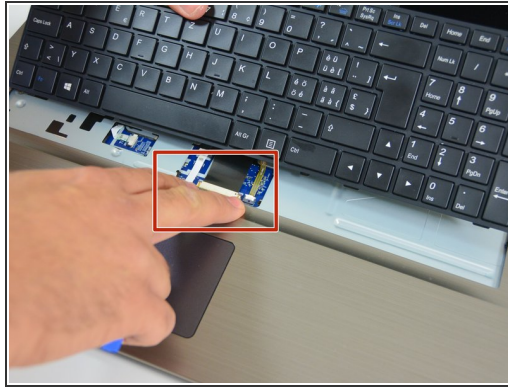
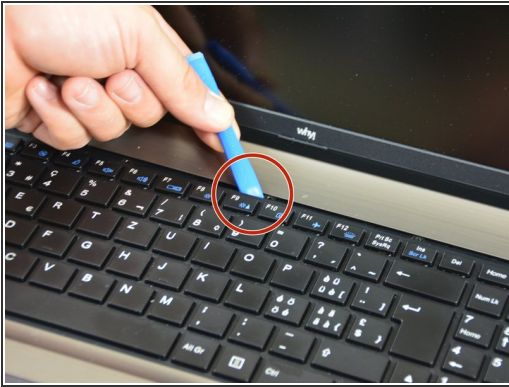
- Once the bottom cover is removed you can start disassembling the keyboard.
- Start by turning the computer over and then unscrew the screw shown in image 2 of this step.
- Then using the screwdriver unscrew the bar that hides the screws fixing the keyboard.

Step 4



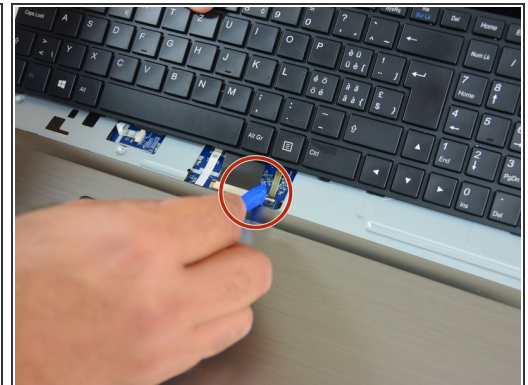
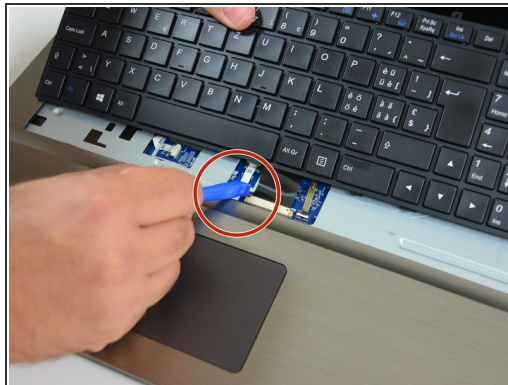
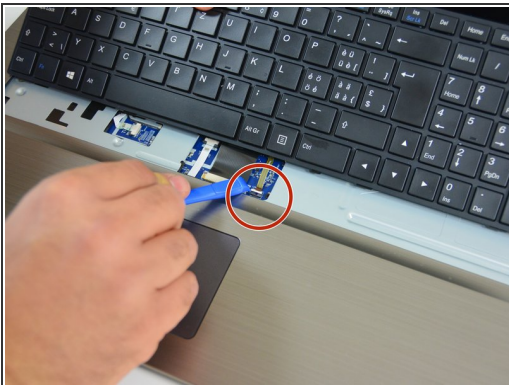
- Once the bar hiding the fixing screws of the keyboard is unclipped we see the tip of the screwdriver.
- Now find the 5 screws fixing the keyboard.
- Unscrew the 5 screws.

Step 5



- Now gently lift the keyboard.
- Then appear the keyboard connection cable and the keyboard backlight cable
- Start by unlocking the right latch of the connector securing the backlight cable.

Step 6



- Then the one on the left.
- Do the same with the left latch of the connector securing the main cable.
- Then with the right latch of the connector fixing the main cable.

Step 7



- Then remove the keyboard from its location.

To reassemble your device, Follow these instructions in reverse order.