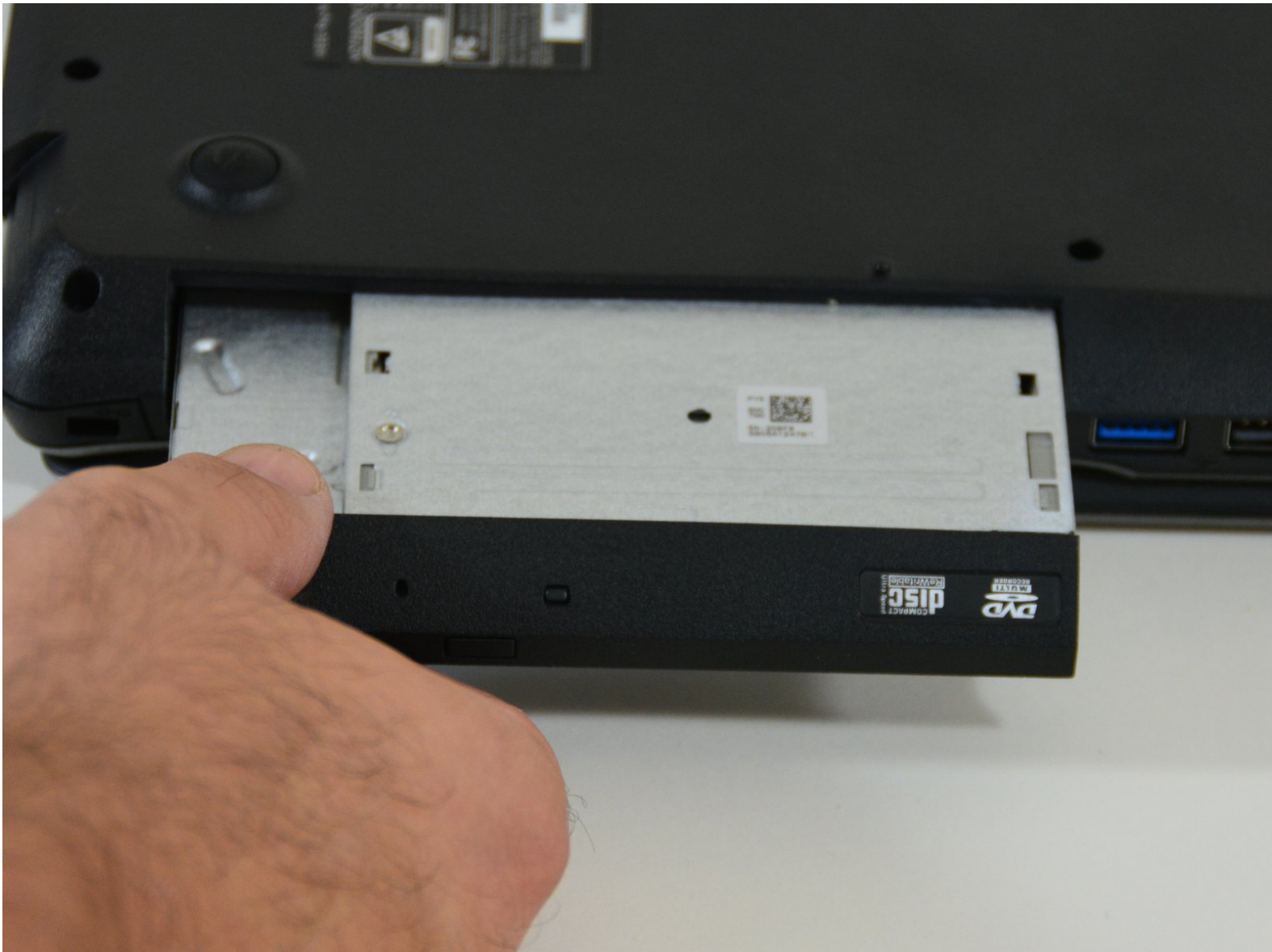




# why! W670SZQ1 Replacement CD / DVD Drive

Written By: Felice Suglia





## PARTS:

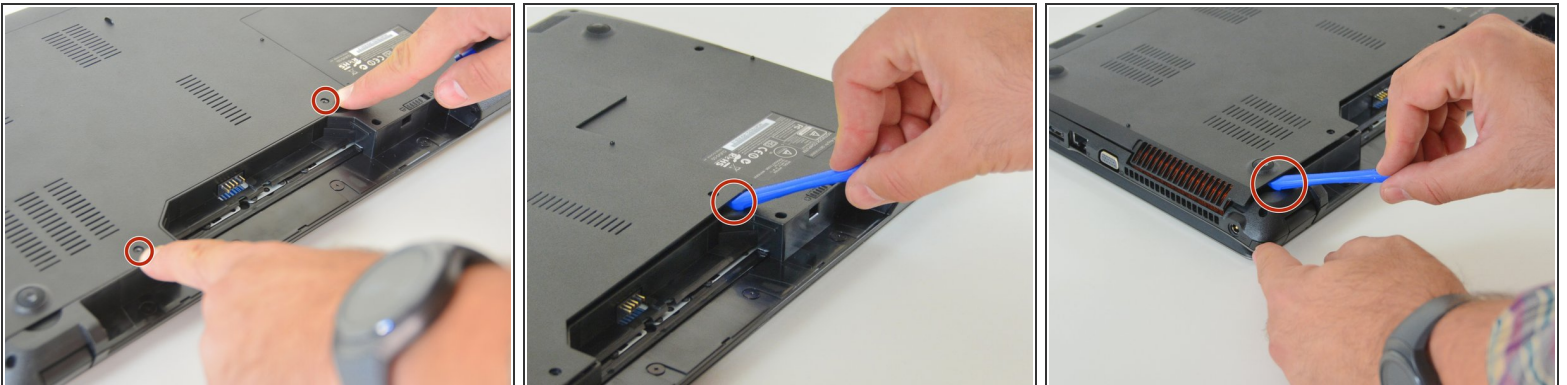
- [New Item](#) (1)
- [New Item](#) (1)

## Step 1 — The Batteries



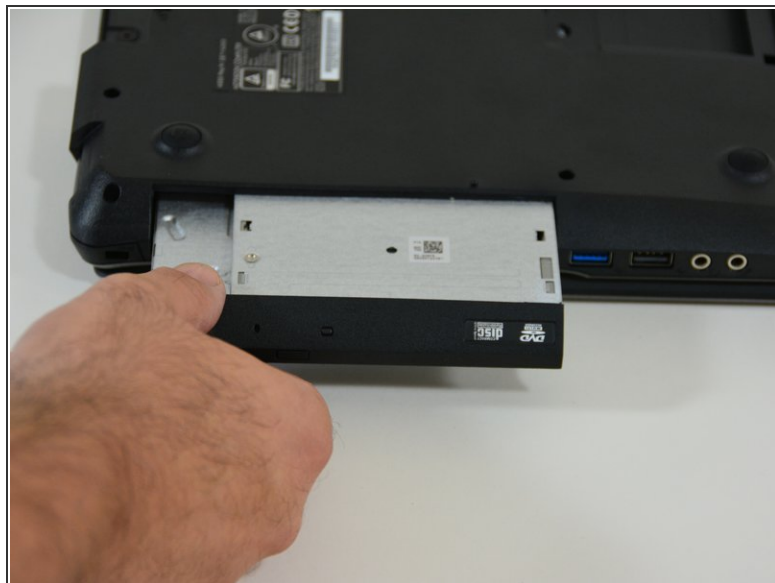
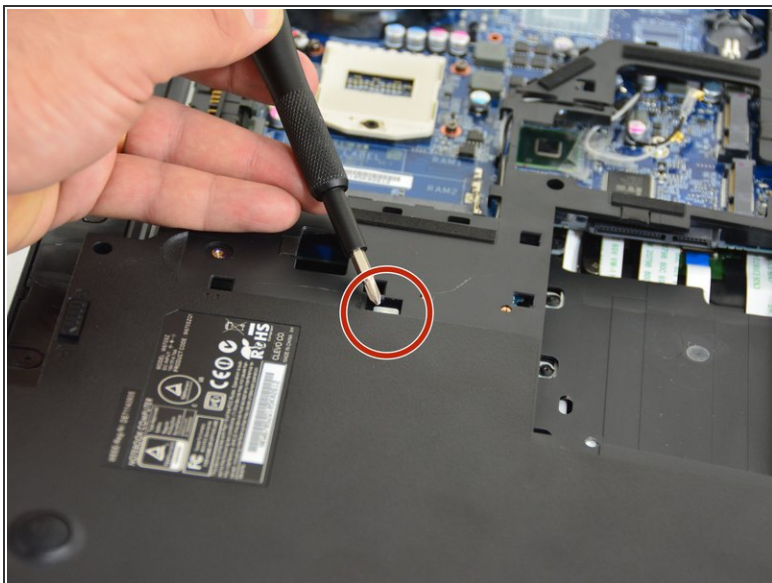
- Unlock the lock latch on the left.
- Unlock the lock latch on the right.
- Remove the battery while holding the lock latch unlocked.

## Step 2 — Access to Major Components



- Using the Philips # 0 screwdriver, unscrew the 2 screws from the bottom cover.
- Lift the bottom right cover with the iFixit Opening Tool.
- Lift the lower left cover with the iFixit Opening Tool.
- Finally clear the bottom cover completely to access the main components.

### Step 3 — CD / DVD player



- Locate the screw that secures the CD / DVD drive. With the Philips screwdriver unscrew this one.
- Finally remove the CD / DVD drive from its location.

TO REASSEMBLE YOUR DEVICE FOLLOW THESE INSTRUCTION IN REVERSE ORDER.