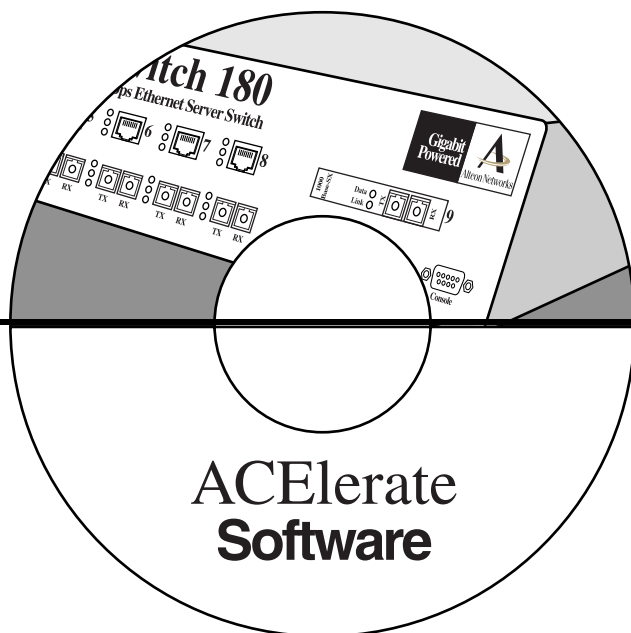


# Quick Guide



## ACEvision™

Part Number: 050034, Revision B

December 1998



**Alteon Networks**  
THE SERVER SWITCHING COMPANY

50 Great Oaks Boulevard  
San Jose, California 95119  
408-360-5500 Main  
408-360-5501 Fax  
[www.alteon-networks.com](http://www.alteon-networks.com)

Copyright 1998 Alteon Networks, Inc., 50 Great Oaks Boulevard, San Jose, California 95119, USA. All rights reserved. Part Number: 050034, Revision B.

This document is protected by copyright and distributed under licenses restricting its use, copying, distribution, and decompilation. No part of this document may be reproduced in any form by any means without prior written authorization of Alteon Networks. Documentation is provided “as is” without warranty of any kind, either express or implied, including any kind of implied or express warranty of non-infringement or the implied warranties of merchantability or fitness for a particular purpose.

U.S. Government End Users: This document is provided with a “commercial item” as defined by FAR 2.101 (Oct 1995) and contains “commercial technical data” and “commercial software documentation” as those terms are used in FAR 12.211-12.212 (Oct 1995). Government End Users are authorized to use this documentation only in accordance with those rights and restrictions set forth herein, consistent with FAR 12.211- 12.212 (Oct 1995), DFARS 227.7202 (JUN 1995) and DFARS 252.227-7015 (Nov 1995).

Alteon Networks, Inc. reserves the right to change any products described herein at any time, and without notice. Alteon Networks assumes no responsibility or liability arising from the use of products described herein, except as expressly agreed to in writing by Alteon Networks, Inc. The use and purchase of this product does not convey a license under any patent rights, trademark rights, or any other intellectual property rights of Alteon Networks, Inc.

ACEvision<sup>™</sup>, ACElerate<sup>™</sup>, and ACEswitch<sup>™</sup> are trademarks of Alteon Networks, Inc. in the United States and certain other countries. Microsoft<sup>®</sup>, Windows<sup>®</sup>, and Windows NT<sup>®</sup> are registered trademarks of Microsoft Corporation in the United States and in other countries. Netscape<sup>®</sup> and Netscape Navigator<sup>®</sup> are registered trademarks of Netscape Communications Corporation in the United States and other countries. Any other trademarks appearing in this manual are owned by their respective companies.





# Contents

---

## **Preface v**

- Who Should Use This Book v
- Typographic Conventions v
- Contacting Alteon Networks vi

## **Getting Started 1**

- Features 1
- Requirements 1
- Switch Set Up 2
  - IP Interfaces 2
  - Enabling/Disabling Web-Access 2
- Web-Browser Set Up 2
- Starting ACEvision 3

## **ACEvision Basics 5**

- The Toolbar 6
  - Context Buttons 6
  - Commands 6
- Navigation Window 7
- Forms Window 7
- Message Window 8

## **Configuring the Switch 9**

- Configuration Steps 9

## **Viewing Statistics 11**

- Steps for Displaying Statistics 11

## **The Dashboard 13**

- Steps for Displaying Dashboards 13







# Preface

---

This *Quick Guide* describes how to access and use the ACEvision Web Interface software included in the Alteon Networks family of switches. For documentation on installing the switch physically, see the hardware installation guide for your particular switch model.

## Who Should Use This Book

---

This *Quick Guide* is intended for network installers and system administrators engaged in configuring and maintaining a network. It assumes that you are familiar with your web-browser, Ethernet concepts, IP addressing, the IEEE 802.1d Spanning-Tree Protocol, and SNMP configuration parameters.

## Typographic Conventions

---

The following table describes the meanings of the various typographic styles used in this book.

Type	Meaning	Example
AaBbCc123	This type is used for names of commands, files, and directories used in the text.  It also depicts on-screen computer output.	Load the <code>Avis_UGa.pdf</code> file.  <code>&gt;&gt; Main#</code>
<b>AaBbCc123</b>	This bold type appears in command examples. It shows text that must be typed in exactly as shown.	<code>&gt;&gt; Main# <b>sys</b></code>
<i>AaBbCc123</i>	This italicized type appears in command examples as a parameter placeholder. Replace the indicated text with a real name or value when using the command.  This also shows book titles, new words or terms, or words to be emphasized.	To establish a Telnet session, type: <code><b>telnet</b> <i>IP-address</i></code>  Read Chapter 6 in your <i>User's Guide</i> . You <i>must</i> log in as <i>admin</i> to do this.
[ ]	Items shown inside brackets are optional and can be used or excluded as the situation demands. Do not type the brackets.	<code><b>ls</b> [-a]</code>

## Contacting Alteon Networks

---

Use the following information to access Alteon Networks Online, customer support, or sales.

- Web access:

<http://www.alteon-networks.com>

This is the URL of Alteon Networks Online Information. This web site includes product information, software updates, release notes, and white papers. The web site also includes access to Alteon Networks Customer Support for accounts under warranty or that are covered by a maintenance contract.

- E-mail access:

[support@alteon-networks.com](mailto:support@alteon-networks.com)

E-mail access to Alteon Networks Customer Support is available to accounts that are under warranty or covered by a maintenance contract.

- Telephone access to Alteon Networks Customer Support:

1-888-Alteon0 (or 1-888-258-3660)  
1-408-360-5695

Telephone access to Alteon Networks Customer Support is available to accounts that are under warranty or covered by a maintenance contract. Normal business hours are 8 a.m. to 6 p.m. PST.

- Telephone access to Alteon Networks Sales:

1-888-Alteon2 (or 1-888-258-3662), and press 2 for Sales  
1-408-360-5600, and press 2 for Sales

Telephone access is available for information regarding product sales and upgrades.





# Getting Started

---

This chapter briefly describes the ACEvision Web Interface software features and requirements, and explains how to access the ACEvision start page.

## Features

---

Beginning with Release 4.0 of the ACElerate Switching Software, the network administrator can access all switch configuration and monitoring functions through ACEvision, a web-based switch management interface. ACEvision has the following features:

- All of the same configuration and monitoring functions as the command-line interface
- Intuitive and easy-to-use interface structure
- Nothing to install; ACEvision is part of the ACElerate Switching Software, beginning with Release 4.0
- Two levels of password protection
- Can be upgraded as future software releases are available

## Requirements

---

- Alteon Networks ACEswitch 180, ACEdirector 2, and ACEdirector 3 series switches
- ACElerate Switching Software, Release 4.0 (or better)
- PC or workstation with network access to the switch
- Frame-capable web-browser software, such as the following:
  - ☐ Netscape Navigator 3.0x or higher
  - ☐ Internet Explorer 3.0x or higher
- JavaScript must be enabled in your web-browser

## Switch Set Up

---

Before you can access ACEvision, minimal configuration is required on the switch.

### IP Interfaces

At least one IP interface must be configured on the switch. This is usually done from the command-line interface during first-time switch set up. Each IP interface address provides a point of access for ACEvision switch management.

For complete information about IP Interface configuration, see your *ACElerate Switch Software User's Guide*.

### Enabling/Disabling Web-Access

By default, ACEvision web access is enabled. If you need to disable or re-enable access, use the following command from the command-line interface:

```
>> Main# /cfg/sys/http
```

For more information on the accessing and configuring the switch through the command-line interface, see your *ACElerate Switch Software User's Guide*.

## Web-Browser Set Up

---

Most modern web-browsers work with frames and JavaScript by default, and require no additional set up. However, you should check your web-browser's features and configuration to make sure frames and JavaScript are enabled.

---

**NOTE** – JavaScript is not the same as Java. Please make sure that JavaScript is enabled in your web-browser.

---



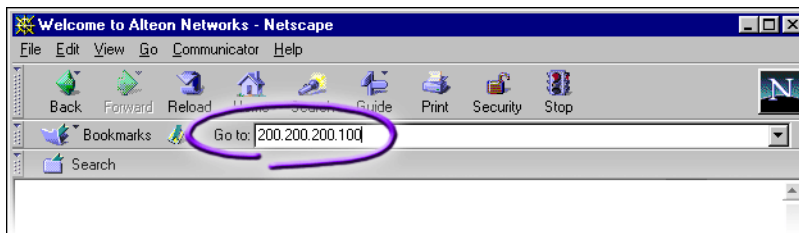


# Starting ACEvision

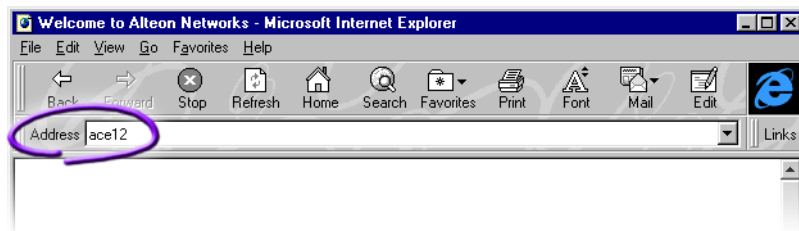
When the switch and browser set up is done, follow these steps to launch ACEvision:

1. **Start your web-browser.**
2. **Enter the switch IP interface address in the web-browser's URL field...**

For example, consider an IP interface with a network IP address of 200.200.200.100. Using Netscape Navigator, you could enter the following:

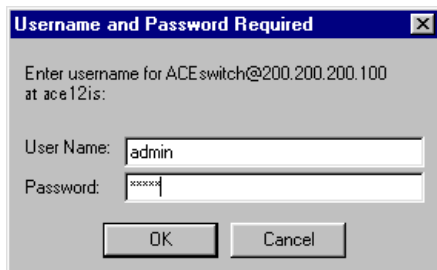


If the IP interface's address has a name on your local domain name server, you could enter the name instead. For example, with Internet Explorer, you could enter the following:



3. **Log in to the switch.**

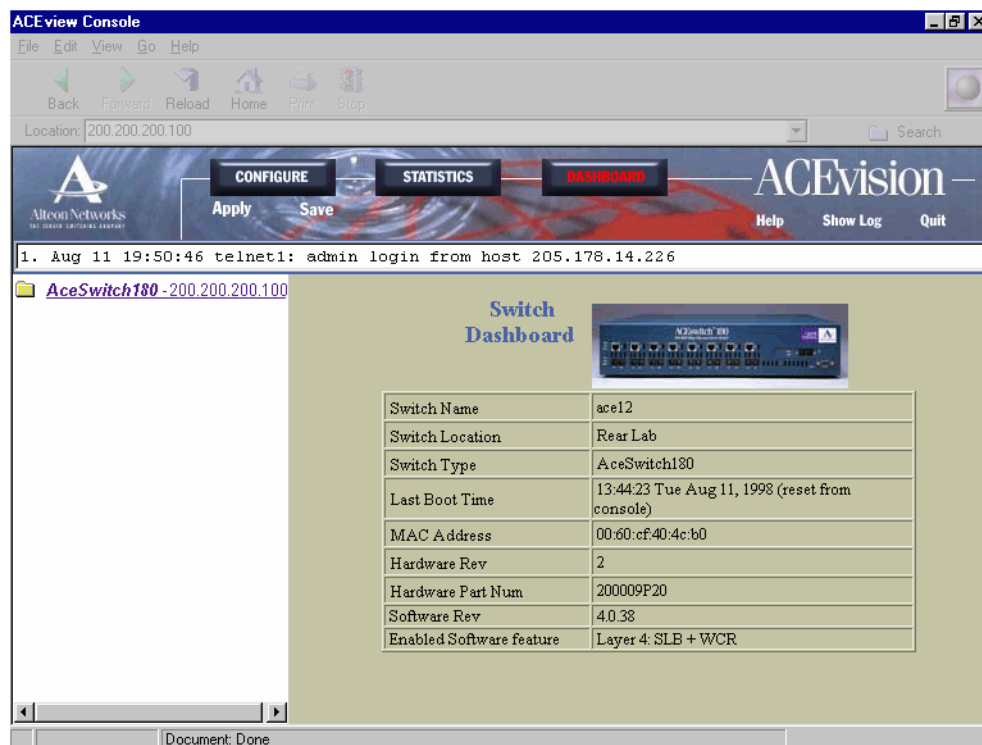
If your switch and browser are properly configured, you will be asked to enter a password:



Enter the account name and password for the switch's administrator or user account. For more password information, see your *ACElerate Switch Software User's Guide*.

#### 4. Allow the ACEvision Dashboard page to load.

When the proper account name and password combination is entered, the ACEvision Dashboard page is displayed in your browser's viewing area:

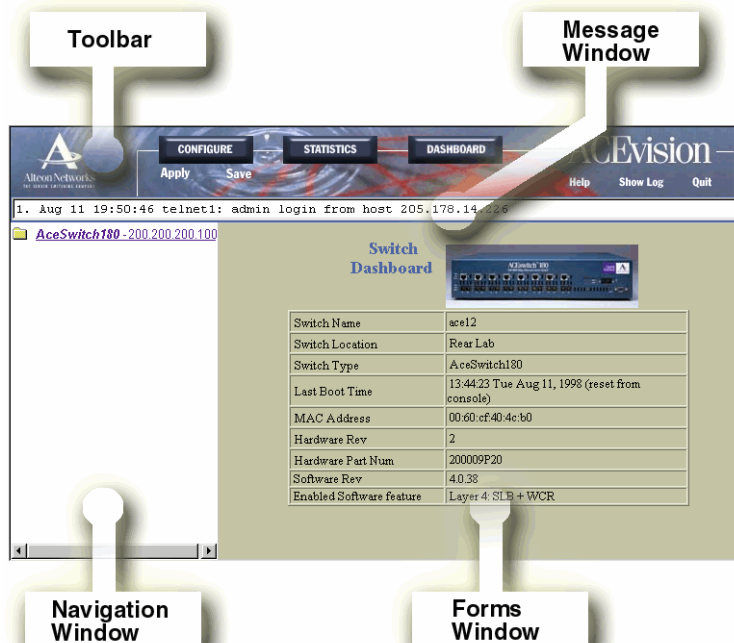


**NOTE** – There may be a slight delay while the Dashboard page is being initialized. You should not stop the browser while loading is in progress. When loading is complete, a folder icon will appear in the left-hand ACEvision window.



## ACEvision Basics

Once you are properly logged in, ACEvision appears in your web-browser's viewing window:



There are four main regions on the ACEvision screen:

- Use the toolbar to select the context for your actions in the other windows.
- The navigation window is used for selecting particular items or features to act upon.
- The forms page is used for viewing or altering switch information.
- The message window displays the 10 latest switch syslog messages and events.

# The Toolbar

---

## Context Buttons

The toolbar is used for setting the context for your actions in the application. There are three context buttons:

---

<b>Configure</b>	When selected, you can access the switch configuration forms. Configuration forms can be altered only if you are logged in using the administrator account. Select an item in the navigation window to display the desired configuration form in the forms window.
<b>Statistics</b>	When selected, you can view information about switch performance. Select an item in the navigation window to display the desired statistics in the forms window.
<b>Dashboard</b>	This context button is selected by default when ACEvision is first activated. When selected, basic switch information and status can be viewed in the forms window. Select an item in the navigation window to display the desired dashboard information in the forms window.

---

When a context icon is selected, the button will be highlighted as a reminder of the current context mode.

## Commands

The following general commands are available on the toolbar:

---

<b>Apply</b>	Pending configuration changes do not take effect until the Apply command is selected. Once applied, all changes (except enabling/disabling Spanning-Tree Protocol) take effect on the switch immediately. If you do not save the changes, however, they will be lost the next time the switch is rebooted.
<b>Save</b>	Write applied configuration changes to non-volatile flash memory on the switch.
<b>Help</b>	Opens a new web-browser window for displaying the basic online help information. Close the help browser when finished.
<b>Show Log</b>	Opens a new web-browser window for displaying the 10 most recent switch log messages. Close the log browser when finished.
<b>Quit</b>	Log off the switch and exit ACEvision.

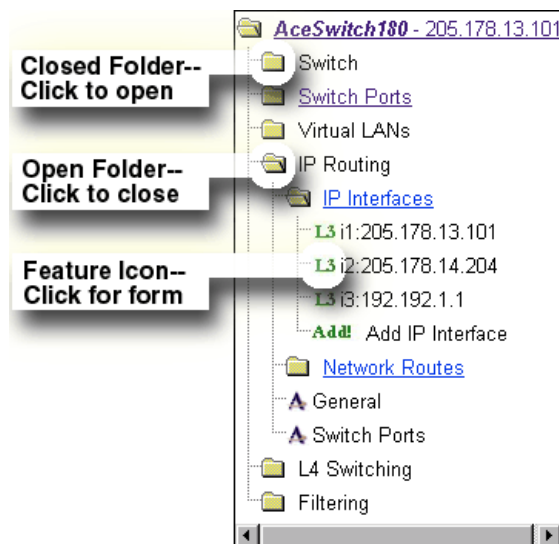
---



## Navigation Window

The navigation window is used for selecting a particular switch feature to act upon. Status, statistics, or configuration forms for the selected item will appear in the forms window, depending on the context chosen on the toolbar.

The navigation window contains a tree of folders, sub-folders, and feature icons:



You can click on any closed folder to open it and reveal its contents. Click on any open folder to close it. Click on any feature icon to load the appropriate status, statistics, or configuration form in the forms window.

Some folders also have forms. If the name of the folders is underlined, click on the name to display the appropriate form.

## Forms Window

When a feature icon is selected on the navigation window, a status, statistics, or configuration form is displayed in the forms window. The exact nature of the form depends on the current context selected on the toolbar, as well as the type of information available. Not all feature icons have forms for all contexts.

Some forms display switch information such as settings, status, or statistics. Others allow you to make configuration changes to switch parameters.

## Message Window

---

Switch log messages are generated by events such as login/logout activity, password changes, configuration changes, and switch reboot. ACEvision records the ten most recent messages and displays each one briefly in the message window. When the tenth message has been displayed, the cycle is repeated.

To view all ten messages at the same time, select the Show Log command on the toolbar. A new web-browser window will be opened to display the log information. Close the window when finished.

For a list of `syslog` messages, see your *ACElerate Switch Software User's Guide*.

# Configuring the Switch

The ACEvision Web Interface can be used to view and change switch configuration parameters. The same configuration parameters that are available through the switch’s command-line interface are present on the ACEvision configuration forms.

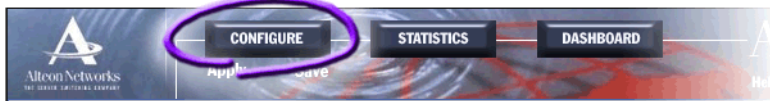
The following provides a basic outline for switch configuration. You should first be familiar with configuration as covered in the *ACElerate Switch Software User’s Guide*.

**NOTE –** You must be logged in using the administrator account in order to change switch configuration settings.

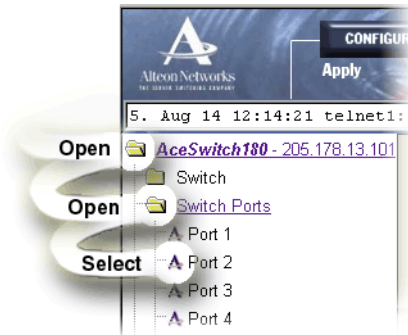
## Configuration Steps

Follow these basic steps for viewing or configuring switch parameters:

1. Select the Configure context button in the ACEvision toolbar:



2. Select a feature icon in the navigation window. For example:



3. View or make changes to the settings shown in the forms window. For example:

The screenshot shows the ACEvision web interface for configuring a switch port. The left sidebar shows a tree view with 'Switch' and 'Switch Ports' expanded. The main area displays the 'Switch Port 1 Configuration' form. The form includes the following settings:

Setting	Value
Switch Port State	enabled
Preferred Link	Gigabit Ethernet
Backup Link	10/100BT
RMON Instrumentation	disabled
VLAN Tagging	disabled
Port STP	enabled
Default Port VLAN ID	
Gigabit Link Flow Control	both Rx/Tx
Gigabit Link Autonegotiation	enabled
10/100BT Link Flow Control	both Rx/Tx
10/100BT Link Autonegotiation	enabled
10/100BT Link Speed	10/100
10/100BT Link Duplex	full/half

At the bottom of the form are 'Submit' and 'Reset' buttons. A purple circle highlights the 'enabled' option for 'Port STP'.

**NOTE** – Fields which must be configured for proper switch operations are highlighted on the forms in **GREEN** type. Items which load other forms when selected are underlined.

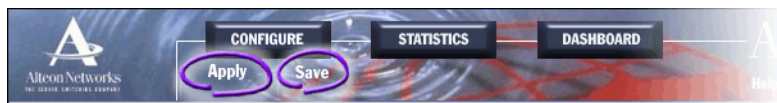
4. Submit, reset, or delete the form contents using buttons on the bottom of the form.

**Submit** When selected, the form sent to the switch. Any configuration changes are placed in the “pending” state and do not take effect until the toolbar Apply command is given.

**Reset** When selected, the form fields are reset to their last submitted values.

**Delete** This button is available for configuration items that can be deleted. When selected, the featured item is slated to be removed from the switch configuration database. The item is not acutally deleted, however, until the toolbar Apply command is given.

5. Apply and save your changes using the toolbar commands.



Pending configuration changes (including deletions) do not take effect until the Apply command is selected. Applied changes take effect on the switch immediately, but will be lost the next time the switch is rebooted unless the Save command is selected.



# Viewing Statistics

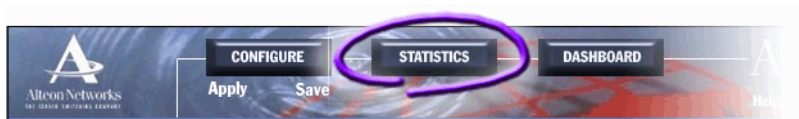
The ACEvision Web Interface can be used to view a variety of switch performance statistics. The same statistics that are available through the switch’s command-line interface are present on the ACEvision statistics forms.

The following provides a basic outline for viewing statistics. You should first be familiar with available statistics as covered in the *ACElerate Switch Software User’s Guide*.

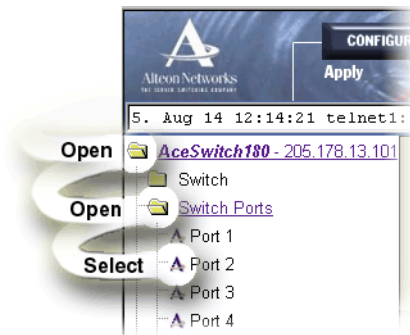
## Steps for Displaying Statistics

Follow these basic steps for viewing switch statistics:

1. Select the Statistics context button in the ACEvision toolbar:



2. Select a feature icon in the navigation window. For example:



3. View the statistics in the forms window. For example:

3. Aug 18 11:15:28 telnet1: admin idle timeout

**Port 2 Statistics**

**Bridging ("dot1") Statistics**

InFrames	OutFrames	InDiscards	EntryDiscards	DelayExceed	MtuExceed	PortForward Transitions	Link-Stat Change
52024634	32079830	1787	0	0	0	0	1

**Interface ("if") Statistics - Input**

Octets	UCastPkts	Bcast Pkts	MCastPkts	Discards	Errors	Unknown Protos
62734178172	51550130	176223	298281	0	0	0

**Interface ("if") Statistics - Output**

Octets	UCastPkts	BcastPkts	MCastPkts	Discards	Errors

**NOTE** – Items which load other forms when selected are underlined.



# The Dashboard

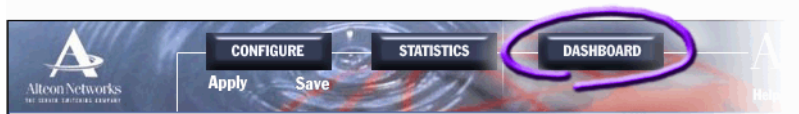
The ACEvision Web Interface can be used to view the present settings and operating status of a variety of switch feature. The same information available through the switch's command-line interface is present on the ACEvision dashboard forms.

The following provides a basic outline for viewing the dashboard forms. You should first be familiar with the information menus as covered in the *ACElerate Switch Software User's Guide*.

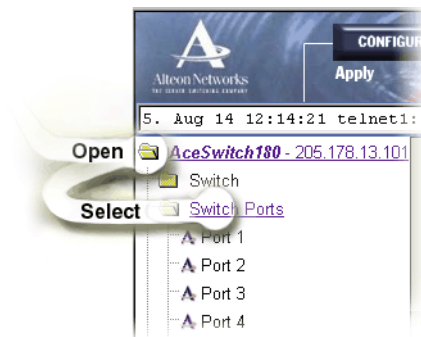
## Steps for Displaying Dashboards

Follow these basic steps for viewing switch dashboard forms:

1. **Select the Dashboard context button in the ACEvision toolbar:**



2. **Select a feature icon in the navigation window. For example:**



3. View information shown in the forms window. For example:

The screenshot displays the ACEvision web interface. At the top, there are tabs for CONFIGURE, STATISTICS, and DASHBOARD (which is active). Below the tabs are buttons for Apply, Save, Help, Show Log, and Quit. The main content area is titled "Switch Ports Dashboard" and shows a table of port configurations and statistics. On the left, there is a tree view showing the hierarchy: Switch > Switch Ports > Port 1 through Port 9. The table has columns for Status, Switch Port Info, Operational Status, Speed Duplex FlowCtl, and Input Frames Output Frames. The table lists ports 1 through 9, with Port 9 being disabled.

Status	Switch Port Info	Operational Status	Speed Duplex FlowCtl	Input Frames Output Frames
	<u>Port1</u> : stp: FORWARDING rmon: disabled tagging: disabled PVID: 1	operational	1000/Full/Both	40744523 48141214
	<u>Port2</u> : stp: FORWARDING rmon: disabled tagging: disabled PVID: 1	operational	1000/Full/Both	52446825 32703405
	<u>Port3</u> : stp: FORWARDING rmon: disabled tagging: disabled PVID: 1	operational	1000/Full/Both	36925673 37709548
	<u>Port4</u> : stp: FORWARDING rmon: disabled tagging: disabled PVID: 1	operational	100/Full/Both	2852092 3951333
	<u>Port5</u> : stp: FORWARDING rmon: disabled tagging: disabled PVID: 2	operational	1000/Full/Both	802065 350449
	<u>Port6</u> : stp: FORWARDING rmon: disabled tagging: disabled PVID: 1	operational	1000/Full/None	74048918 63907289
	<u>Port7</u> : stp: FORWARDING rmon: disabled tagging: disabled PVID: 1	operational	1000/Full/Both	26991635 23261555
	<u>Port8</u> : stp: FORWARDING rmon: disabled tagging: disabled PVID: 1	operational	1000/Full/Both	110931834 135551345
	<u>Port9</u> : stp: DISABLED rmon: disabled			0

**NOTE** – Items which load other forms when selected are underlined.

